

# UNEMPLOYMENT INSURANCE STATISTICS

State of Oregon  
EMPLOYMENT DEPARTMENT

UI Programs  
Janet Orton

(503) 947-1679

janet.l.orton@state.or.us

www.WorkingInOregon.org

LABOR FORCE DATA		This Month	Last Month	Last Year
		Apr 2009	Mar 2009	Apr 2008
Oregon Civilian Labor Force		1,999,933	1,991,769	1,938,890
Total Number Unemployed		242,550	252,155	101,964

UNEMPLOYMENT RATES (CIVILIAN) (%)		Labor Force & Rate Data: <a href="http://www.QualityInfo.org">www.QualityInfo.org</a>		
		This Month	Last Month	Last Year
Total Unemployment:	Oregon	12.1	12.7	5.3
	National	8.6	9.0	4.8
Seasonally Adjusted:	Oregon	12.0	11.9	5.6
	National	8.9	8.5	5.0

Week # :	20					This Month	Last Month	Last Year		
Ending:	May 23, 2009	THIS WEEK		LAST WEEK		Apr 2009	Mar 2009	Apr 2008		
		2009	2008	2009	2008	Apr 2009	Mar 2009	Apr 2008		
<b>UNEMPLOYMENT RATES (%)</b>										
Insured Unemployment: Oregon		7.13	3.13	7.29	3.29	7.60	7.16	3.75		
EB Trigger		7.55	3.37	7.56	3.42					
Adjusted Insured Unemployment		9.12	4.07	9.13	4.11					
National Average TUR <sup>1</sup>		11.50	5.50	10.90	5.50					
<b>REGULAR CLAIMS (UI, UCFFE, UCX)</b>								This Month	Last Month	Last Year
<b>Initial Claims (Excl. Liable) <sup>2</sup></b>		<b>11,394</b>	<b>6,595</b>	<b>10,889</b>	<b>7,064</b>	<b>52,770</b>	<b>56,789</b>	<b>33,704</b>		
Oregon - New		4,621	3,544	3,610	3,368	22,815	23,306	16,474		
Additional		6,341	2,834	6,819	3,449	28,040	31,658	16,003		
Interstate - Agent		432	217	460	247	1,915	1,825	1,227		
Interstate - Liable		275	178	255	143	1,260	1,327	823		
<b>Weeks Claimed (Excl. Liable) <sup>2</sup></b>		<b>120,609</b>	<b>53,610</b>	<b>123,538</b>	<b>56,322</b>	<b>522,222</b>	<b>519,714</b>	<b>234,919</b>		
Oregon		116,140	51,473	118,890	54,085	504,167	502,014	224,808		
Interstate - Agent		4,469	2,137	4,648	2,237	18,055	17,700	10,111		
Interstate - Liable		3,415	1,581	3,511	1,638	14,126	13,879	7,160		
<b>New Combined Wage Claims</b>		<b>178</b>	<b>162</b>	<b>198</b>	<b>135</b>	<b>940</b>	<b>1,013</b>	<b>697</b>		
<b>Non-monetary Determinations &amp; Redeter.</b>		<b>3,495</b>	<b>2,617</b>	<b>3,534</b>	<b>2,631</b>	<b>11,589</b>	<b>12,312</b>	<b>11,759</b>		
<b>PAYMENTS: REGULAR BENEFITS</b>										
First Payments		4,512	2,697	4,269	3,073	22,246	23,014	12,104		
Checks Issued		119,416	50,847	121,373	53,431	506,995	505,926	220,066		
Gross Amount of Payments (\$) <sup>2,4</sup>		37,203,093	13,649,414	37,869,626	14,363,478	158,335,959	157,147,571	59,575,154		
Regular Benefit Payments (\$)		34,424,043	13,649,414	35,043,226	14,363,478	146,539,459	145,591,871	59,575,154		
Regular Federal Additional Compensation (\$) <sup>3</sup>		2,779,050	0	2,826,400	0	11,796,500	11,555,700	0		
Average Check Amount (\$) <sup>2,4</sup>		<b>311.54</b>	<b>268.44</b>	<b>312.01</b>	<b>268.82</b>	<b>312.30</b>	<b>310.61</b>	<b>270.71</b>		
Number Exhausting Benefits		3,023	1,134	3,091	1,092	9,444	6,980	4,192		
<b>TRUST FUND</b>										
Balance (in Millions) (\$)		\$ 1,579.00	\$ 2,177.27	\$ 1,604.54	\$ 2,186.41	\$ 1,525.40	\$ 1,634.75	\$ 2,052.69		

<sup>1</sup> NTUR: Unemployment Compensation Amendment of 1992 specifies that a 2 month average NTUR be used to determine duration levels.

<sup>2</sup> Excludes WORKSHARE program

<sup>3</sup> Federal Additional Compensation program start 3/2/2009 - Adds and additional \$25 to all claims

<sup>4</sup> Includes FAC Payments

For current and historic UI reports, visit:

<http://www.oregon.gov/EMPLOY/BUDGET/UI/index.shtml>

<b>Week # :</b>	<b>20</b>
<b>Ending:</b>	<b>May 23, 2009</b>

	<b>This Week</b>	<b>Last Week</b>	<b>Cumulative</b>
<b>EXTENDED BENEFITS (UI, UCFE, UCX)</b>			<b>YTD</b>
Initial Claims (Excl. Liable)	569	352	4,213
Weeks Claimed (Excl. Liable)	3,492	2,975	14,762
Gross Amount of Payments (\$) <sup>4</sup>	1,261,727	910,057	4,393,349
EB Benefit Payments (\$)	1,162,552	836,257	4,016,874
EB Federal Additional Compensation (\$) <sup>3</sup>	99,175	73,800	376,475
Number Exhausting Benefits	17	6	79

Oregon HEB Trigger "ON" 02/15/2009.

For a list of states ON EB, visit:

[http://www.workforcesecurity.doleta.gov/unemploy/claims\\_arch.asp](http://www.workforcesecurity.doleta.gov/unemploy/claims_arch.asp)

<b>Misc Additional Benefits</b>			
Initial Claims (Excl. Liable)	17	2	44
Weeks Claimed (Excl. Liable)	47	24	565
Gross Amount of Payments (\$)	0	0	0
Number Exhausting Benefits	0	0	0

<b>TRADE ADJUSTMENT ACT</b>			
Training Plans	6	23	738
Initial Claims	46	102	2,653
Weeks Claimed	153	173	1,041
Gross Amount of TRA Payments (\$) <sup>4</sup>	68,268	74,336	399,624
TRA Benefit Payments (\$)	64,118	69,786	379,349
TRA Federal Additional Compensation (\$) <sup>3</sup>	4,150	4,550	20,275
Certifications	1	1	16
Gross Amount of TAA Payments (\$)	2,618	3,013	35,895

<b>WORKSHARE PROGRAM</b>			
Initial Claims	282	431	10,620
Weeks Claimed	5,905	5,805	93,703
Gross Amount of Payments (\$) <sup>4</sup>	713,665	695,984	9,943,528
WS Benefit Payments (\$)	579,515	566,929	8,508,298
WS Federal Additional Compensation (\$)	134,150	129,055	1,435,230

<b>TRAINING UI (TUI)</b>			
Applications Accepted	104	123	2,914
Approved	94	103	2,372
Weeks Claimed	2,190	2,164	29,873
Gross Amount of Payments (\$) <sup>4</sup>	775,333	764,058	10,692,667
TUI Benefit Payments (\$)	721,158	710,108	10,180,437
TUI Federal Additional Compensation (\$)	54,175	53,950	512,230

<b>SUD</b>			
Initial Claims	2	1	7
Weeks Claimed	12	17	72
Gross Amount of Payments (\$) <sup>4</sup>	4,264	5,798	30,147
SUD Benefit Payments (\$)	3,964	5,348	28,097
SUD Federal Additional Compensation (\$)	300	450	2,050

<sup>3</sup> Federal Additional Compensation program start 3/2/2009 - Adds and additional \$25 to all claims

<sup>4</sup> Includes FAC Payments

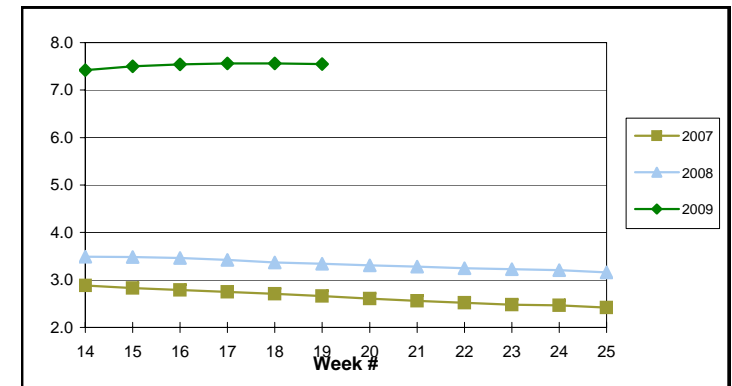
For current and historic UI reports, visit:

<http://www.oregon.gov/EMPLOY/BUDGET/UI/index.shtml>

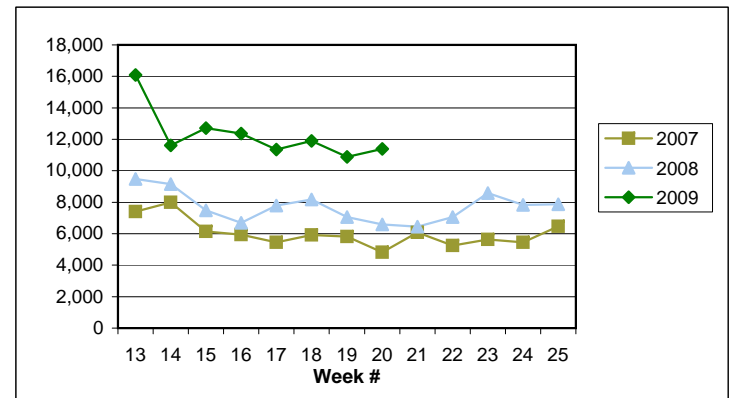
(503) 947-1679

✉ [janet.l.orton@state.or.us](mailto:janet.l.orton@state.or.us)

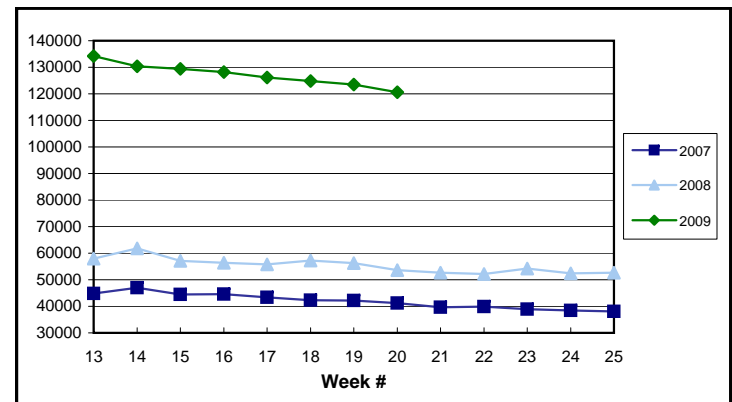
**EB Trigger: 7.55**



**Regular Initial Claims: 11,394**



**Regular Weeks Claimed: 120,609**



**Week # :** 20  
**Ending:** May 23, 2009

**This Week**    **Last Week**    **Cumulative**  
 YTD

<b>SELF EMPLOYMENT (SEA) MONTHLY</b> <sup>5</sup>		<b>Apr 2009</b>	<b>Cumulative</b>
Referred		60	175
Enrolled		91	249
Completed		25	78
<b>Weeks Claimed</b>	<b>172</b>	<b>654</b>	<b>3,004</b>
<b>Gross Amount of Payments (\$)</b> <sup>4</sup>	<b>77,485</b>	<b>286,646</b>	<b>1,265,910</b>
<b>SEA Benefit Payments (\$)</b>	<b>73,185</b>	<b>270,421</b>	<b>1,218,135</b>
<b>SEA Federal Additional Compensation (\$)</b> <sup>3</sup>	<b>4,300</b>	<b>16,225</b>	<b>47,775</b>

<sup>5</sup> These are MONTHLY counts; data in BOLD is weekly.

<b>DISASTER UNEMPLOYMENT ASSISTANCE (DUA)</b>			
Initial Claims	0	0	0
Weeks Claimed	0	0	0
Gross Amount of Payments (\$)	0	0	0
Insured	0	0	0
Self Employed	0	0	0
Number Exhausting Benefits	0	0	0

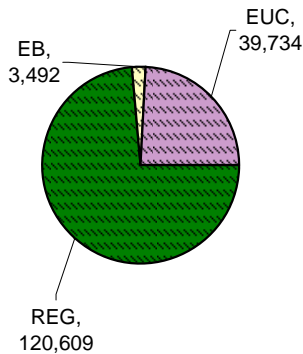
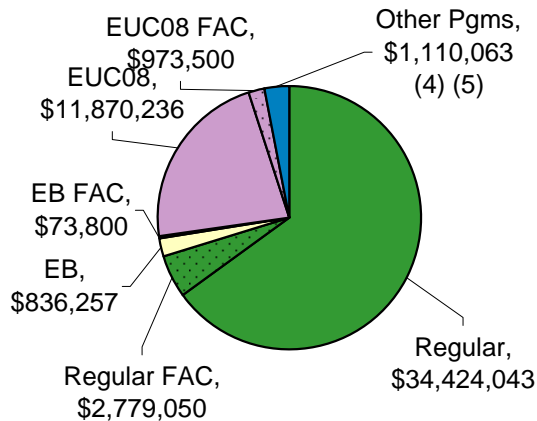
Announcement Date 12/12/2007

<b>EMERGENCY UNEMPLOYMENT COMPENSATION 08</b>			
Initial Claims (Excl. Liable)	3,145	2,917	44,408
Weeks Claimed (Excl. Liable)	39,734	38,260	696,927
Gross Amount of Payments (\$) <sup>4</sup>	12,843,736	12,413,664	216,135,596
EUC Benefit Payments (\$)	11,870,236	11,471,839	205,187,696
EUC Federal Additional Compensation (\$) <sup>3</sup>	973,500	941,825	10,947,900
Number Exhausting Tier 1 Benefits	784	757	24,121
Number Exhausting Tier 2 Benefits	642	675	10,853

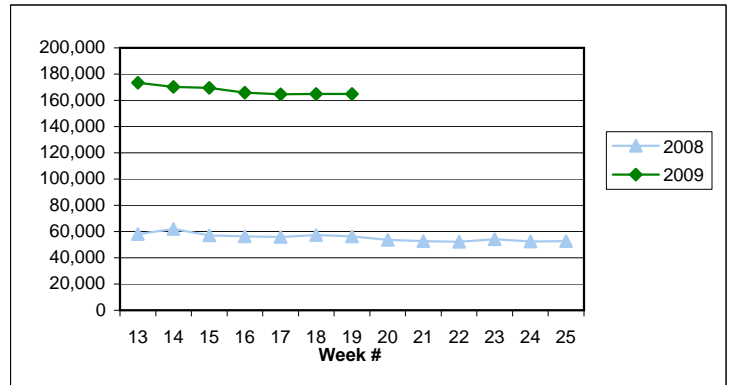
EUC begins 07/06/2008

**Benefits Paid By Program**

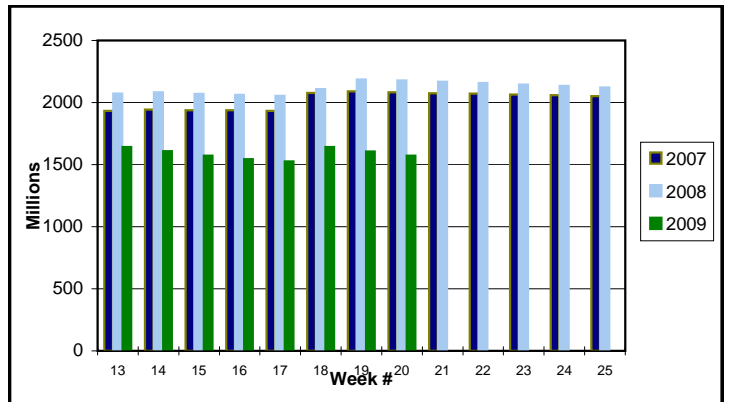
**Weeks Claimed - Program by Program**  
**Total: 163,835**



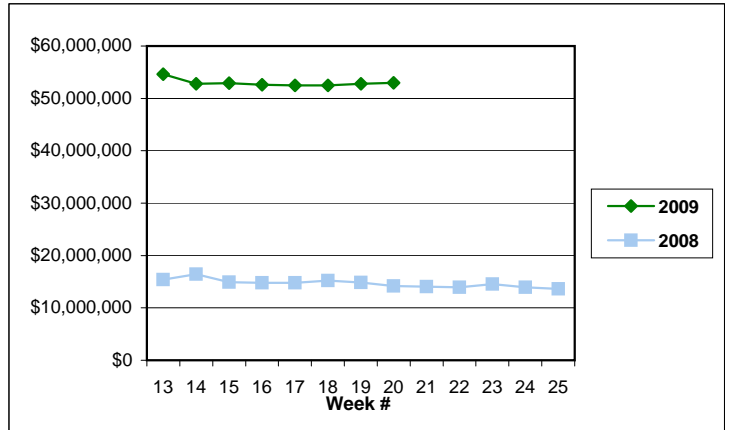
**Total Weeks Claimed (Regular + EB + EUC): 163,835**



**Trust Fund Balance: \$ 1,573.00 (in millions)**



**Total Benefits Paid: \$52,950,189**



<sup>3</sup> Federal Additional Compensation program start 3/2/2009 - Adds and additional \$25 to all claims

<sup>4</sup> Includes FAC Payments

<sup>5</sup> Other Programs Include AB, TRA, TAA, WS, TUI, SUD, SEA

For current and historic UI reports, visit:

<http://www.oregon.gov/EMPLOY/BUDGET/UI/index.shtml>

**(503) 947-1679**

[janet.l.orton@state.or.us](mailto:janet.l.orton@state.or.us)