

UNEMPLOYMENT INSURANCE STATISTICS

State of Oregon
EMPLOYMENT DEPARTMENT

UI Programs
Janet Orton

(503) 947-1679

janet.l.orton@state.or.us

www.WorkingInOregon.org

LABOR FORCE DATA	This Month	Last Month	Last Year
	Apr 2009	Mar 2009	Apr 2008
Oregon Civilian Labor Force	1,999,933	1,991,769	1,938,890
Total Number Unemployed	242,550	252,155	101,964

UNEMPLOYMENT RATES (CIVILIAN) (%)	Labor Force & Rate Data: www.QualityInfo.org			
	Total Unemployment:	Oregon	National	
		12.1	12.7	5.3
		8.6	9.0	4.8
Seasonally Adjusted:	Oregon	12.0	11.9	5.6
	National	8.9	8.5	5.0

Week # :	21
Ending:	May 30, 2009

UNEMPLOYMENT RATES (%)	THIS WEEK		LAST WEEK		This Month	Last Month	Last Year
	2009	2008	2009	2008	Apr 2009	Mar 2009	Apr 2008
Insured Unemployment: Oregon	6.94	3.08	7.13	3.13	7.60	7.16	3.75
EB Trigger	7.51	3.34	7.55	3.37			
Adjusted Insured Unemployment	9.08	4.03	9.12	4.07			
National Average TUR ¹	11.50	5.50	11.50	5.50			
REGULAR CLAIMS (UI, UC FE, UCX)					Apr 2009	Mar 2009	Apr 2008
Initial Claims (Excl. Liable) ²	11,154	3,755	11,394	6,595	52,770	56,789	33,704
Oregon - New	3,552	299	4,621	3,544	22,815	23,306	16,474
Additional	7,157	3,230	6,341	2,834	28,040	31,658	16,003
Interstate - Agent	445	226	432	217	1,915	1,825	1,227
Interstate - Liable	238	136	275	178	1,260	1,327	823
Weeks Claimed (Excl. Liable) ²	117,662	52,674	120,609	53,610	522,222	519,714	234,919
Oregon	113,270	50,499	116,140	51,473	504,167	502,014	224,808
Interstate - Agent	4,392	2,175	4,469	2,137	18,055	17,700	10,111
Interstate - Liable	3,344	1,573	3,415	1,581	14,126	13,879	7,160
New Combined Wage Claims	160	165	178	162	940	1,013	697
Non-monetary Determinations & Redeter.	2,792	2,576	3,495	2,617	11,589	12,312	11,759
PAYMENTS: REGULAR BENEFITS							
First Payments	3,670	2,631	4,512	2,697	22,246	23,014	12,104
Checks Issued	115,687	50,265	119,416	50,847	506,995	505,926	220,066
Gross Amount of Payments (\$) ^{2,4}	36,238,967	13,530,897	37,203,093	13,649,414	158,335,959	157,147,571	59,575,154
Regular Benefit Payments (\$)	33,538,717	13,530,897	34,424,043	13,649,414	146,539,459	145,591,871	59,575,154
Regular Federal Additional Compensation (\$) ³	2,700,250	0	2,779,050	0	11,796,500	11,555,700	0
Average Check Amount (\$) ^{2,4}	313.25	269.19	311.54	268.44	312.30	310.61	270.71
Number Exhausting Benefits	3,332	1,064	3,023	1,134	9,444	6,980	4,192
TRUST FUND							
Balance (in Millions) (\$)	\$ 1,548.04	\$ 2,166.67	\$ 1,573.00	\$ 2,177.27	\$ 1,525.40	\$ 1,634.75	\$ 2,052.69

¹ NTUR: Unemployment Compensation Amendment of 1992 specifies that a 2 month average NTUR be used to determine duration levels.

² Excludes WORKSHARE program

³ Federal Additional Compensation program start 3/2/2009 - Adds and additional \$25 to all claims

⁴ Includes FAC Payments

For current and historic UI reports, visit:

<http://www.oregon.gov/EMPLOY/BUDGET/UI/index.shtml>

Week # :	21
Ending:	May 30, 2009

	This Week	Last Week	Cumulative
EXTENDED BENEFITS (UI, UCFE, UCX)			YTD
Initial Claims (Excl. Liable)	3,379	569	7,592
Weeks Claimed (Excl. Liable)	6,585	3,492	21,347
Gross Amount of Payments (\$) ⁴	4,970,046	1,261,727	9,363,395
EB Benefit Payments (\$)	4,591,871	1,162,552	8,608,745
EB Federal Additional Compensation (\$) ³	378,175	99,175	754,650
Number Exhausting Benefits	14	17	81

Oregon HEB Trigger "ON" 02/15/2009.

For a list of states ON EB, visit:

http://www.workforcesecurity.doleta.gov/unemploy/claims_arch.asp

Misc Additional Benefits			
Initial Claims (Excl. Liable)	6	17	50
Weeks Claimed (Excl. Liable)	31	47	596
Gross Amount of Payments (\$)	0	0	0
Number Exhausting Benefits	0	0	0

TRADE ADJUSTMENT ACT			
Training Plans	12	6	750
Initial Claims	47	46	2,700
Weeks Claimed	8	153	1,049
Gross Amount of TRA Payments (\$) ⁴	3,244	68,268	402,868
TRA Benefit Payments (\$)	3,044	64,118	382,393
TRA Federal Additional Compensation (\$) ³	200	4,150	20,475
Certifications	0	1	16
Gross Amount of TAA Payments (\$)	0	2,618	35,895

WORKSHARE PROGRAM			
Initial Claims	251	282	10,871
Weeks Claimed	4,777	5,905	98,480
Gross Amount of Payments (\$) ⁴	569,931	713,665	10,513,459
WS Benefit Payments (\$)	463,556	579,515	8,971,854
WS Federal Additional Compensation (\$)	106,375	134,150	1,541,605

TRAINING UI (TUI)			
Applications Accepted	112	104	3,026
Approved	98	94	2,470
Weeks Claimed	2,230	2,190	32,103
Gross Amount of Payments (\$) ⁴	816,470	775,333	11,590,137
TUI Benefit Payments (\$)	759,370	721,158	11,020,807
TUI Federal Additional Compensation (\$)	57,100	54,175	569,330

SUD			
Initial Claims	0	2	7
Weeks Claimed	9	12	81
Gross Amount of Payments (\$) ⁴	2,926	4,264	33,073
SUD Benefit Payments (\$)	2,701	3,964	30,798
SUD Federal Additional Compensation (\$)	225	300	2,275

³ Federal Additional Compensation program start 3/2/2009 - Adds and additional \$25 to all claims

⁴ Includes FAC Payments

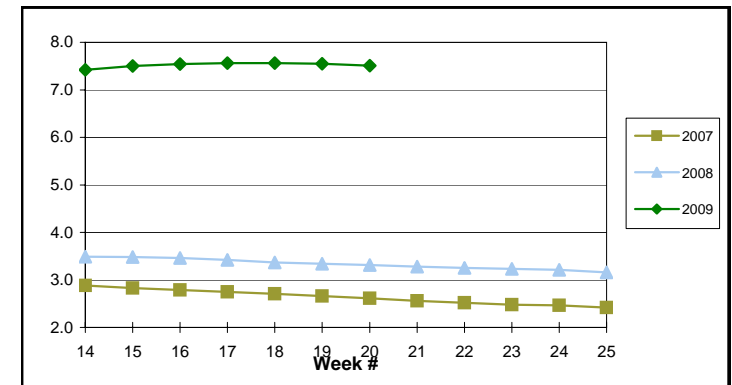
For current and historic UI reports, visit:

<http://www.oregon.gov/EMPLOY/BUDGET/UI/index.shtml>

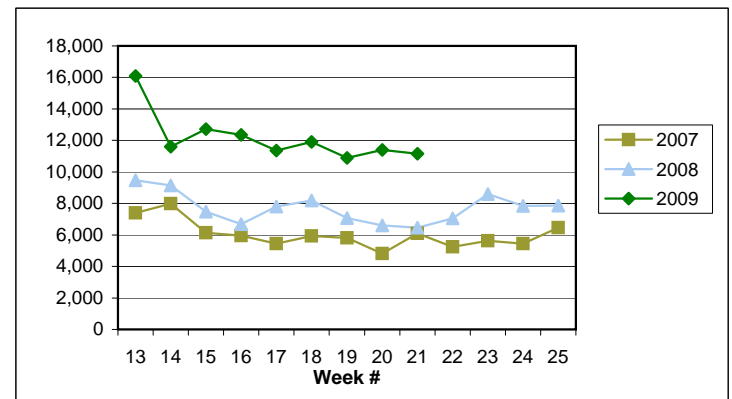
(503) 947-1679

janet.l.orton@state.or.us

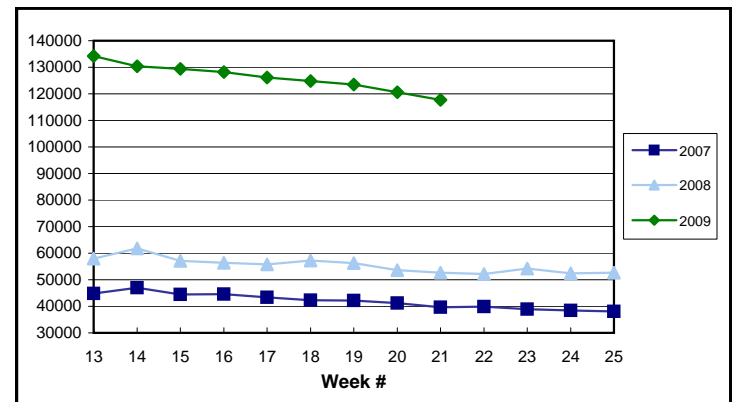
EB Trigger: 7.51



Regular Initial Claims: 11,154



Regular Weeks Claimed: 117,662



Week # : 21
Ending: May 30, 2009

Total Weeks Claimed (Regular + EB + EUC): 164,894

	This Week	Last Week	Cumulative
YTD			
SELF EMPLOYMENT (SEA) MONTHLY⁵		Apr 2009	Cumulative
Referred		60	238
Enrolled		91	351
Completed		25	108
Weeks Claimed	202	654	3,004
Gross Amount of Payments (\$)⁴	90,849	286,646	1,265,910
SEA Benefit Payments (\$)	85,874	270,421	1,218,135
SEA Federal Additional Compensation (\$)³	4,975	16,225	47,775

⁵ These are MONTHLY counts; data in BOLD is weekly.

DISASTER UNEMPLOYMENT ASSISTANCE (DUA)			
Initial Claims	0	0	0
Weeks Claimed	0	0	0
Gross Amount of Payments (\$)	0	0	0
Insured	0	0	0
Self Employed	0	0	0
Number Exhausting Benefits	0	0	0

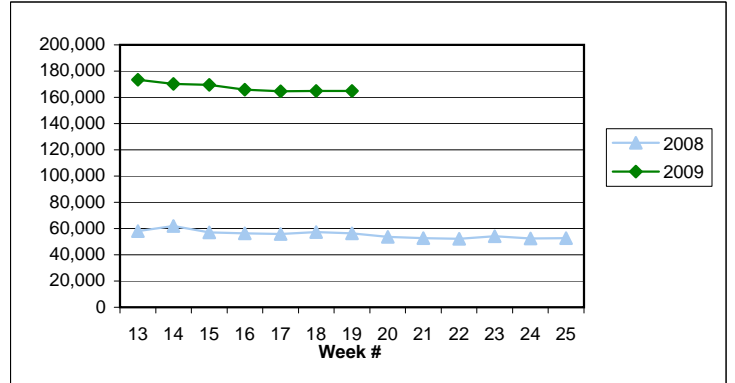
Announcement Date 12/12/2007

EMERGENCY UNEMPLOYMENT COMPENSATION 08			
Initial Claims (Excl. Liable)	2,739	3,145	47,147
Weeks Claimed (Excl. Liable)	40,647	39,734	737,574
Gross Amount of Payments (\$) ⁴	13,183,111	12,843,736	229,318,707
EUC Benefit Payments (\$)	12,185,411	11,870,236	217,373,107
EUC Federal Additional Compensation (\$) ³	997,700	973,500	11,945,600
Number Exhausting Tier 1 Benefits	1,126	784	24,184
Number Exhausting Tier 2 Benefits	794	642	10,895

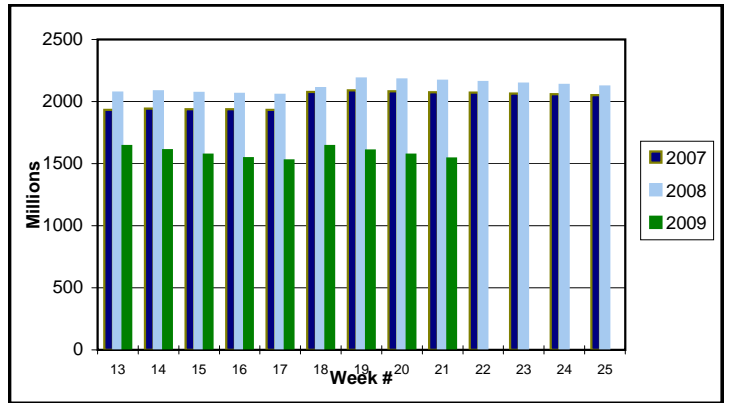
EUC begins 07/06/2008

Benefits Paid By Program

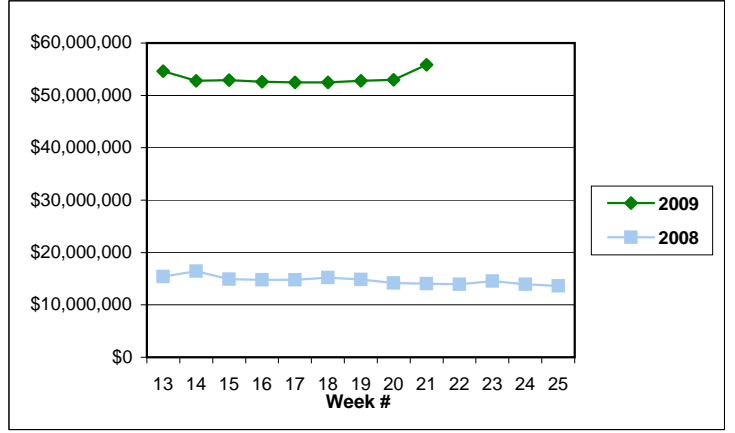
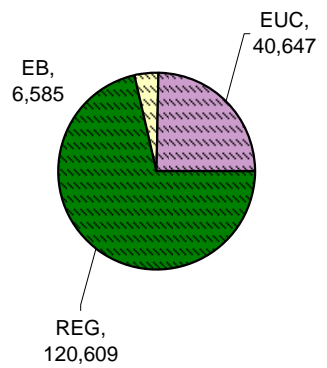
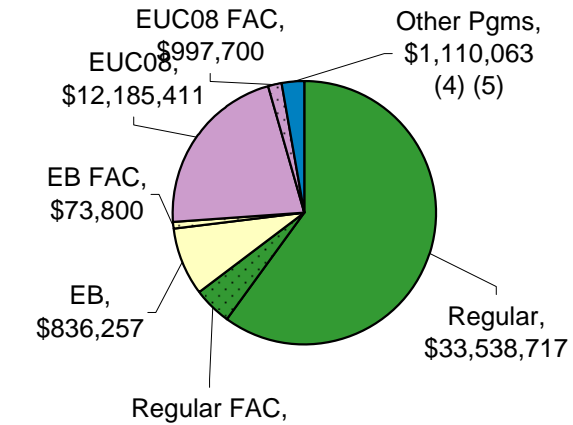
Weeks Claimed - Program by Program
Total: 164,894



Trust Fund Balance: \$ 1,541.93 (in millions)



Total Benefits Paid: \$55,875,544



³ Federal Additional Compensation program start 3/2/2009 - Adds and additional \$25 to all claims

⁴ Includes FAC Payments

⁵ Other Programs Include AB, TRA, TAA, WS, TUI, SUD, SEA

For current and historic UI reports, visit:

<http://www.oregon.gov/EMPLOY/BUDGET/UI/index.shtml>

(503) 947-1679

janet.l.orton@state.or.us