

UNEMPLOYMENT INSURANCE STATISTICS

State of Oregon
EMPLOYMENT DEPARTMENT

UI Programs
Janet Orton

(503) 947-1679

janet.l.orton@state.or.us

www.WorkingInOregon.org

LABOR FORCE DATA					This Month	Last Month	Last Year	
					Apr 2009	Mar 2009	Apr 2008	
Oregon Civilian Labor Force					1,999,933	1,991,769	1,938,890	
Total Number Unemployed					242,550	252,155	101,964	
UNEMPLOYMENT RATES (CIVILIAN) (%)					Labor Force & Rate Data: www.QualityInfo.org			
Total Unemployment:					Oregon	12.1	12.7	5.3
					National	8.6	9.0	4.8
Seasonally Adjusted:					Oregon	12.0	11.9	5.6
					National	8.9	8.5	5.0
Week # :	22	THIS WEEK		LAST WEEK		This Month	Last Month	Last Year
Ending:	June 6, 2009	2009	2008	2009	2008	May 2009	Apr 2009	May 2008
UNEMPLOYMENT RATES (%)								
Insured Unemployment: Oregon		7.01	305.00	6.94	3.08	7.16	7.60	2.96
EB Trigger		7.46	331.00	7.51	3.34			
Adjusted Insured Unemployment		9.35	4.00	9.08	4.03			
National Average TUR ¹		11.50	5.50	11.50	5.50			
REGULAR CLAIMS (UI, UCFFE, UCX)						This Month	Last Month	Last Year
						May 2009	Apr 2009	May 2008
Initial Claims (Excl. Liable) ²		12,267	7,059	11,154	6,229	56,697	52,770	29,667
Oregon - New		4,969	2,544	3,552	2,999	20,674	22,815	13,907
Additional		6,881	4,306	7,157	3,230	33,804	28,040	14,861
Interstate - Agent		417	209	445	226	2,219	1,915	899
Interstate - Liable		295	144	238	136	1,376	1,260	654
Weeks Claimed (Excl. Liable) ²		118,774	52,138	117,662	52,674	612,803	522,222	217,919
Oregon		114,324	50,287	113,270	50,499	590,297	504,167	208,579
Interstate - Agent		4,450	1,851	4,392	2,175	22,506	18,055	9,340
Interstate - Liable		3,365	1,553	3,344	1,573	17,254	14,126	6,422
New Combined Wage Claims		191	96	160	165	972	940	625
Non-monetary Determinations & Redeter.		3,285	2,011	2,792	2,576	16,087	11,589	10,914
PAYMENTS: REGULAR BENEFITS								
First Payments		3,944	2,348	3,670	2,631	21,059	22,246	11,252
Checks Issued		116,535	49,540	115,687	50,265	601,831	506,995	207,167
Gross Amount of Payments (\$) ^{2,4}		36,580,055	13,397,134	36,238,967	13,530,897	187,994,425	158,335,959	55,725,244
Regular Benefit Payments (\$)		33,865,805	13,397,134	33,538,717	13,530,897	173,960,900	146,539,459	55,725,244
Regular Federal Additional Compensation (\$) ³		2,714,250	0	2,700,250	0	14,033,525	11,796,500	0
Average Check Amount (\$) ^{2,4}		313.90	270.43	313.25	269.19	312.37	312.30	268.99
Number Exhausting Benefits		3,128	1,144	3,332	1,064	14,843	9,444	4,469
TRUST FUND								
Balance (in Millions) (\$)		\$ 1,546.01	\$ 2,166.67	\$ 1,541.93	\$ 2,166.67	\$ 1,548.04	\$ 1,525.40	\$ 2,157.34

¹ NTUR: Unemployment Compensation Amendment of 1992 specifies that a 2 month average NTUR be used to determine duration levels.

² Excludes WORKSHARE program

³ Federal Additional Compensation program start 3/2/2009 - Adds and additional \$25 to all claims

⁴ Includes FAC Payments

For current and historic UI reports, visit:

<http://www.oregon.gov/EMPLOY/BUDGET/UI/index.shtml>

Week # :	22
Ending:	June 6, 2009

	This Week	Last Week	Cumulative
EXTENDED BENEFITS (UI, UCFE, UCX)			YTD
Initial Claims (Excl. Liable)	1,287	3,379	8,879
Weeks Claimed (Excl. Liable)	7,886	6,585	29,233
Gross Amount of Payments (\$) ⁴	3,131,944	4,970,046	12,495,339
EB Benefit Payments (\$)	2,891,044	4,591,871	11,499,789
EB Federal Additional Compensation (\$) ³	240,900	378,175	995,550
Number Exhausting Benefits	17	14	124

Oregon HEB Trigger "ON" 02/15/2009.

For a list of states ON EB, visit:

http://www.workforcesecurity.doleta.gov/unemploy/claims_arch.asp

Misc Additional Benefits			
Initial Claims (Excl. Liable)	4	6	54
Weeks Claimed (Excl. Liable)	65	31	661
Gross Amount of Payments (\$)	0	0	0
Number Exhausting Benefits	0	0	0

TRADE ADJUSTMENT ACT			
Training Plans	36	12	786
Initial Claims	53	47	2,753
Weeks Claimed	4	8	1,053
Gross Amount of TRA Payments (\$) ⁴	1,032	3,244	403,900
TRA Benefit Payments (\$)	957	3,044	383,350
TRA Federal Additional Compensation (\$) ³	75	200	20,550
Certifications	0	0	16
Gross Amount of TAA Payments (\$)	0	0	35,895

WORKSHARE PROGRAM			
Initial Claims	533	251	11,404
Weeks Claimed	5,796	4,777	104,276
Gross Amount of Payments (\$) ⁴	674,484	569,931	11,187,943
WS Benefit Payments (\$)	546,704	463,556	9,518,558
WS Federal Additional Compensation (\$)	127,780	106,375	1,669,385

TRAINING UI (TUI)			
Applications Accepted	78	112	3,105
Approved	68	98	2,538
Weeks Claimed	2,241	2,230	34,344
Gross Amount of Payments (\$) ⁴	793,912	816,470	12,303,049
TUI Benefit Payments (\$)	738,087	759,370	11,677,894
TUI Federal Additional Compensation (\$)	55,825	57,100	625,155

SUD			
Initial Claims	0	0	7
Weeks Claimed	5	9	86
Gross Amount of Payments (\$) ⁴	1,422	2,926	34,495
SUD Benefit Payments (\$)	1,297	2,701	32,095
SUD Federal Additional Compensation (\$)	125	225	2,400

³ Federal Additional Compensation program start 3/2/2009 - Adds and additional \$25 to all claims

⁴ Includes FAC Payments

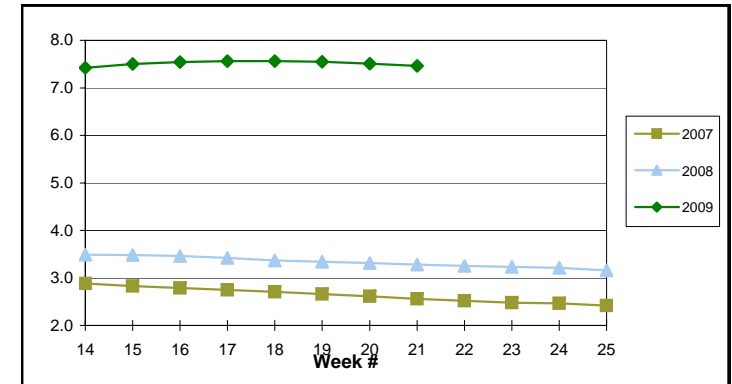
For current and historic UI reports, visit:

<http://www.oregon.gov/EMPLOY/BUDGET/UI/index.shtml>

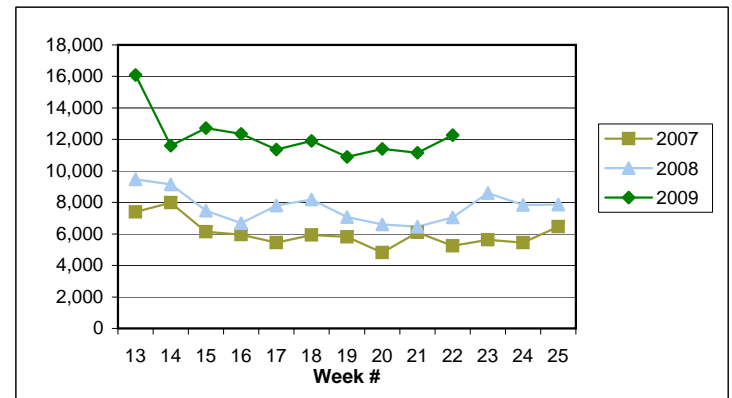
(503) 947-1679

✉ janet.l.orton@state.or.us

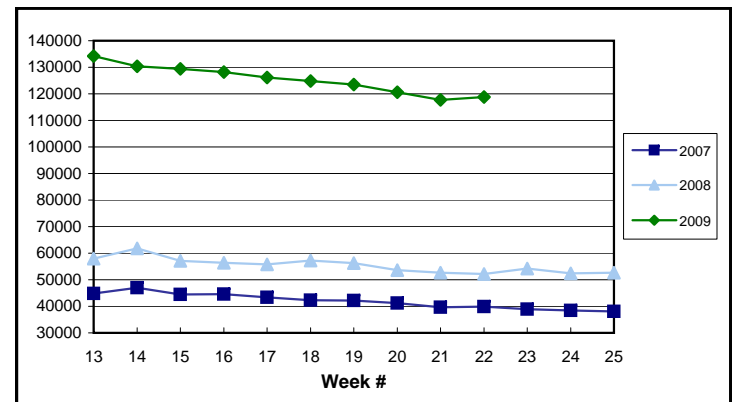
EB Trigger: 7.46



Regular Initial Claims: 12,267



Regular Weeks Claimed: 118,774



Week # : 22
Ending: June 6, 2009

This Week **Last Week** **Cumulative**
 YTD

SELF EMPLOYMENT (SEA) MONTHLY ⁵		May 2009	Cumulative
Referred		63	238
Enrolled		102	351
Completed		30	108
Weeks Claimed	217	894	3,423
Gross Amount of Payments (\$) ⁴	95,130	397,559	1,451,889
SEA Benefit Payments (\$)	89,780	375,409	1,393,789
SEA Federal Additional Compensation (\$) ³	5,350	22,150	58,100

⁵ These are MONTHLY counts; data in BOLD is weekly.

DISASTER UNEMPLOYMENT ASSISTANCE (DUA)			
Initial Claims	0	0	0
Weeks Claimed	0	0	0
Gross Amount of Payments (\$)	0	0	0
Insured	0	0	0
Self Employed	0	0	0
Number Exhausting Benefits	0	0	0

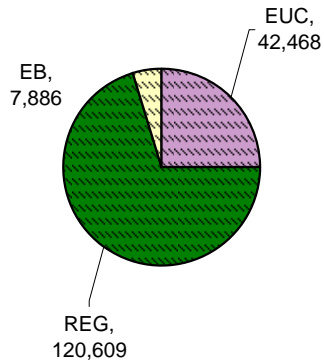
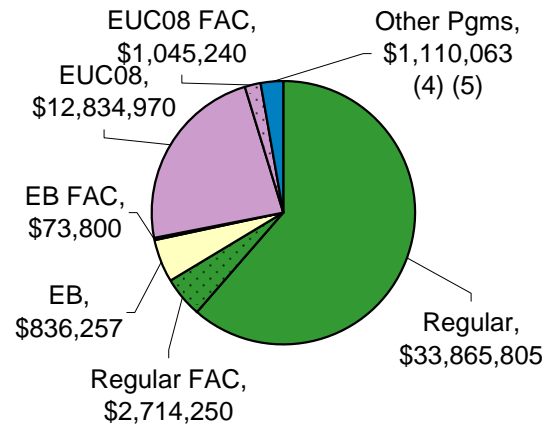
Announcement Date 12/12/2007

EMERGENCY UNEMPLOYMENT COMPENSATION 08			
Initial Claims (Excl. Liable)	3,391	2,739	50,538
Weeks Claimed (Excl. Liable)	42,468	40,647	780,042
Gross Amount of Payments (\$) ⁴	13,880,210	13,183,111	243,198,917
EUC Benefit Payments (\$)	12,834,970	12,185,411	230,208,077
EUC Federal Additional Compensation (\$) ³	1,045,240	997,700	12,990,840
Number Exhausting Tier 1 Benefits	981	1,126	25,165
Number Exhausting Tier 2 Benefits	763	794	11,658

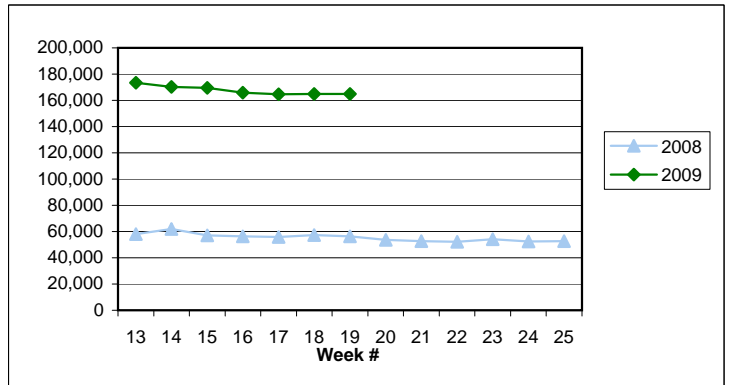
EUC begins 07/06/2008

Benefits Paid By Program

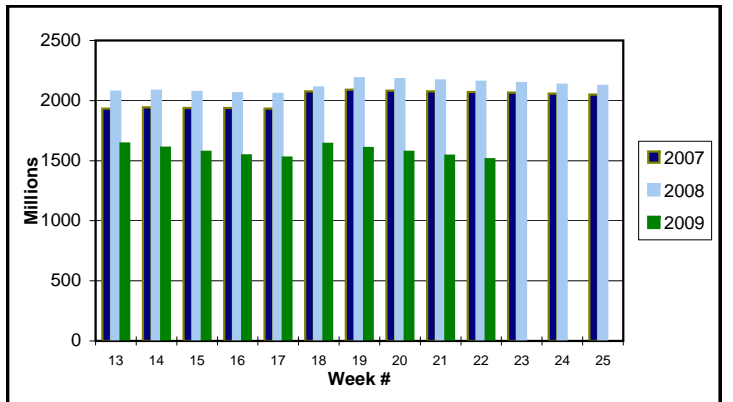
Weeks Claimed - Program by Program
Total: 169,128



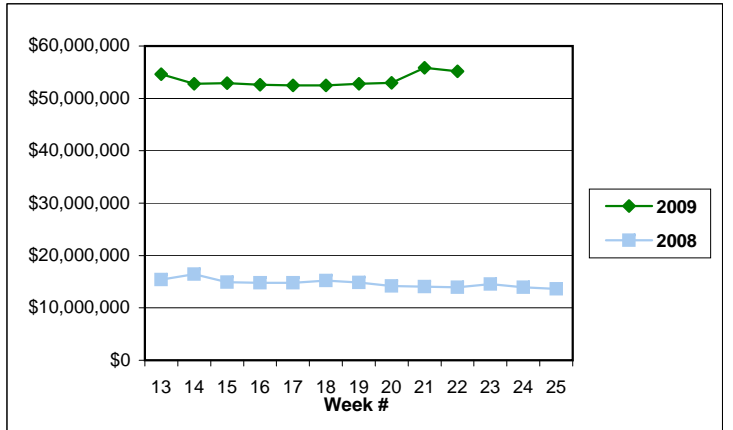
Total Weeks Claimed (Regular + EB + EUC): 169,128



Trust Fund Balance: \$ 1,511.37 (in millions)



Total Benefits Paid: \$55,158,189



³ Federal Additional Compensation program start 3/2/2009 - Adds and additional \$25 to all claims

⁴ Includes FAC Payments

⁵ Other Programs Include AB, TRA, TAA, WS, TUI, SUD, SEA

For current and historic UI reports, visit:

<http://www.oregon.gov/EMPLOY/BUDGET/UI/index.shtml>

(503) 947-1679

janet.l.orton@state.or.us