

# UNEMPLOYMENT INSURANCE STATISTICS

State of Oregon  
EMPLOYMENT DEPARTMENT

UI Programs  
Janet Orton

(503) 947-1679

janet.l.orton@state.or.us

www.WorkingInOregon.org

					This Month	Last Month	Last Year	
LABOR FORCE DATA					May 2009	Apr 2009	May 2008	
Oregon Civilian Labor Force					1,992,473	1,995,969	1,942,642	
Total Number Unemployed					240,615	238,294	103,441	
UNEMPLOYMENT RATES (CIVILIAN) (%)					Labor Force & Rate Data: <a href="http://www.QualityInfo.org">www.QualityInfo.org</a>			
Total Unemployment:					Oregon	12.1	11.9	5.3
					National	9.1	8.6	5.2
Seasonally Adjusted:					Oregon	12.4	11.8	5.7
					National	9.4	8.9	5.5
Week # :	23	THIS WEEK		LAST WEEK		This Month	Last Month	Last Year
Ending:	June 13, 2009	2009	2008	2009	2008	May 2009	Apr 2009	May 2008
UNEMPLOYMENT RATES (%)								
Insured Unemployment: Oregon		7.41	3.17	7.01	3.05	7.16	7.60	2.96
EB Trigger		7.39	3.28	7.46	3.31			
Adjusted Insured Unemployment		9.29	3.98	9.35	4.00			
National Average TUR <sup>1</sup>		11.50	5.50	11.50	5.50			
REGULAR CLAIMS (UI, UCFFE, UCX)						This Month	Last Month	Last Year
						May 2009	Apr 2009	May 2008
Initial Claims (Excl. Liable) <sup>2</sup>		10,796	8,586	12,267	7,059	56,697	52,770	29,667
Oregon - New		4,180	4,230	4,969	2,544	20,674	22,815	13,907
Additional		6,145	4,137	6,881	4,306	33,804	28,040	14,861
Interstate - Agent		471	219	417	209	2,219	1,915	899
Interstate - Liable		276	216	295	144	1,376	1,260	654
Weeks Claimed (Excl. Liable) <sup>2</sup>		114,781	54,216	118,774	52,138	612,803	522,222	217,919
Oregon		110,339	52,119	114,324	50,287	590,297	504,167	208,579
Interstate - Agent		4,442	2,097	4,450	1,851	22,506	18,055	9,340
Interstate - Liable		3,282	1,606	3,365	1,553	17,254	14,126	6,422
New Combined Wage Claims		184	123	191	96	972	940	625
Non-monetary Determinations & Redeter.		2,902	2,415	3,285	2,011	16,087	11,589	10,914
PAYMENTS: REGULAR BENEFITS								
First Payments		4,241	2,755	3,944	2,348	21,059	22,246	11,252
Checks Issued		112,069	51,734	116,535	49,540	601,831	506,995	207,167
Gross Amount of Payments (\$) <sup>2,4</sup>		35,138,424	14,040,580	36,580,055	13,397,134	187,994,425	158,335,959	55,725,244
Regular Benefit Payments (\$)		32,527,024	14,040,580	33,865,805	13,397,134	173,960,900	146,539,459	55,725,244
Regular Federal Additional Compensation (\$) <sup>3</sup>		2,611,400	0	2,714,250	0	14,033,525	11,796,500	0
Average Check Amount (\$) <sup>2,4</sup>		313.54	271.40	313.90	270.43	312.37	312.30	268.99
Number Exhausting Benefits		3,092	1,009	3,128	1,144	14,843	9,444	4,469
TRUST FUND								
Balance (in Millions) (\$)		\$ 1,513.37	\$ 2,145.39	\$ 1,511.37	\$ 2,166.67	\$ 1,548.04	\$ 1,525.40	\$ 2,157.34

<sup>1</sup> NTUR: Unemployment Compensation Amendment of 1992 specifies that a 2 month average NTUR be used to determine duration levels.

<sup>2</sup> Excludes WORKSHARE program

<sup>3</sup> Federal Additional Compensation program start 3/2/2009 - Adds and additional \$25 to all claims

<sup>4</sup> Includes FAC Payments

For current and historic UI reports, visit:

<http://www.oregon.gov/EMPLOY/BUDGET/UI/index.shtml>

<b>Week # :</b>	<b>23</b>
<b>Ending:</b>	<b>June 13, 2009</b>

	<b>This Week</b>	<b>Last Week</b>	<b>Cumulative</b>
	<b>YTD</b>		
<b>EXTENDED BENEFITS (UI, UCFE, UCX)</b>			
Initial Claims (Excl. Liable)	796	1,287	9,675
Weeks Claimed (Excl. Liable)	7,857	7,886	97,090
Gross Amount of Payments (\$) <sup>4</sup>	2,877,696	3,131,944	15,373,035
EB Benefit Payments (\$)	2,654,396	2,891,044	14,154,185
EB Federal Additional Compensation (\$) <sup>3</sup>	223,300	240,900	1,218,850
Number Exhausting Benefits	28	17	126

Oregon HEB Trigger "ON" 02/15/2009.

For a list of states ON EB, visit:

[http://www.workforcesecurity.doleta.gov/unemploy/claims\\_arch.asp](http://www.workforcesecurity.doleta.gov/unemploy/claims_arch.asp)

<b>Misc Additional Benefits</b>			
Initial Claims (Excl. Liable)	2	4	56
Weeks Claimed (Excl. Liable)	32	65	693
Gross Amount of Payments (\$)	0	0	0
Number Exhausting Benefits	0	0	0

<b>TRADE ADJUSTMENT ACT</b>			
Training Plans	45	36	831
Initial Claims	55	53	2,808
Weeks Claimed	4	4	1,057
Gross Amount of TRA Payments (\$) <sup>4</sup>	903	1,032	404,803
TRA Benefit Payments (\$)	853	957	384,203
TRA Federal Additional Compensation (\$) <sup>3</sup>	50	75	20,600
Certifications	0	0	16
Gross Amount of TAA Payments (\$)	2,209	0	38,104

<b>WORKSHARE PROGRAM</b>			
Initial Claims	317	533	11,721
Weeks Claimed	5,288	5,796	109,564
Gross Amount of Payments (\$) <sup>4</sup>	609,741	674,484	11,797,684
WS Benefit Payments (\$)	495,336	546,704	10,013,894
WS Federal Additional Compensation (\$)	114,405	127,780	1,783,790

<b>TRAINING UI (TUI)</b>			
Applications Accepted	133	78	3,237
Approved	118	68	2,656
Weeks Claimed	2,254	2,241	36,598
Gross Amount of Payments (\$) <sup>4</sup>	797,849	793,912	13,100,898
TUI Benefit Payments (\$)	741,549	738,087	12,419,443
TUI Federal Additional Compensation (\$)	56,300	55,825	681,455

<b>SUD</b>			
Initial Claims	0	0	7
Weeks Claimed	5	5	91
Gross Amount of Payments (\$) <sup>4</sup>	2,088	1,422	36,583
SUD Benefit Payments (\$)	1,913	1,297	34,008
SUD Federal Additional Compensation (\$)	175	125	2,575

<sup>3</sup> Federal Additional Compensation program start 3/2/2009 - Adds and additional \$25 to all claims

<sup>4</sup> Includes FAC Payments

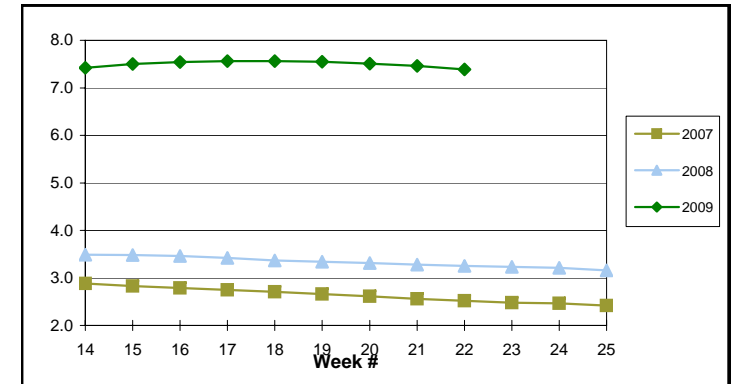
For current and historic UI reports, visit:

<http://www.oregon.gov/EMPLOY/BUDGET/UI/index.shtml>

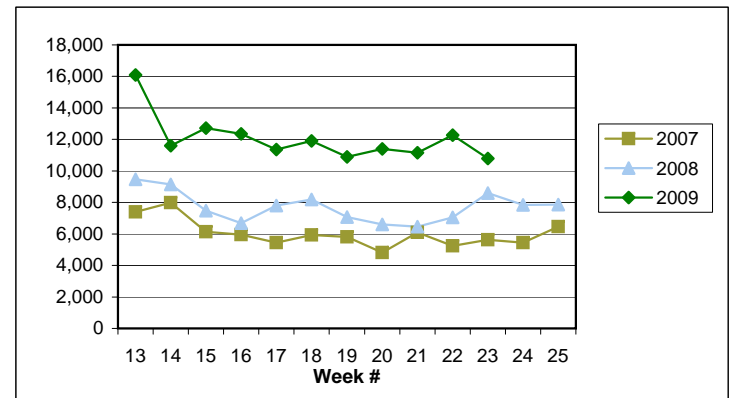
(503) 947-1679

✉ [janet.l.orton@state.or.us](mailto:janet.l.orton@state.or.us)

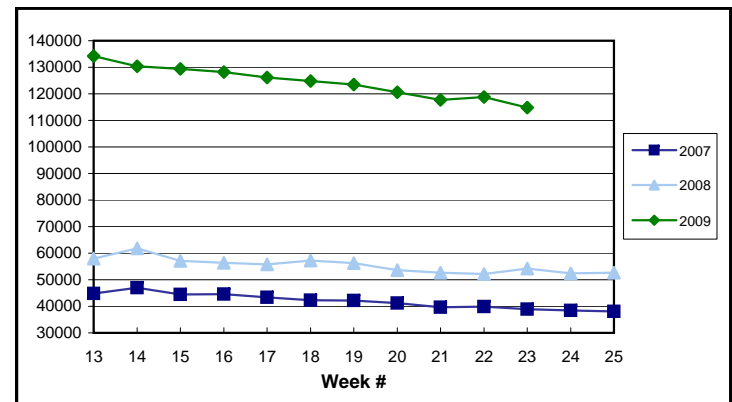
**EB Trigger: 7.39**



**Regular Initial Claims: 10,796**



**Regular Weeks Claimed: 114,781**



**Week # :** 23  
**Ending:** June 13, 2009

**This Week    Last Week    Cumulative**  
 YTD

<b>SELF EMPLOYMENT (SEA) MONTHLY<sup>5</sup></b>		<b>May 2009</b>	<b>Cumulative</b>
Referred		63	238
Enrolled		102	351
Completed		30	108
<b>Weeks Claimed</b>	<b>209</b>	894	<b>3,632</b>
<b>Gross Amount of Payments (\$) <sup>4</sup></b>	<b>87,451</b>	397,559	<b>1,539,340</b>
<b>SEA Benefit Payments (\$)</b>	<b>82,526</b>	375,409	<b>1,476,315</b>
<b>SEA Federal Additional Compensation (\$) <sup>3</sup></b>	<b>4,925</b>	22,150	<b>63,025</b>

<sup>5</sup> These are MONTHLY counts; data in **BOLD** is weekly.

<b>DISASTER UNEMPLOYMENT ASSISTANCE (DUA)</b>			
Initial Claims	0	0	0
Weeks Claimed	0	0	0
Gross Amount of Payments (\$)	<b>0</b>	<b>0</b>	<b>0</b>
Insured	0	0	0
Self Employed	0	0	0
Number Exhausting Benefits	0	0	0

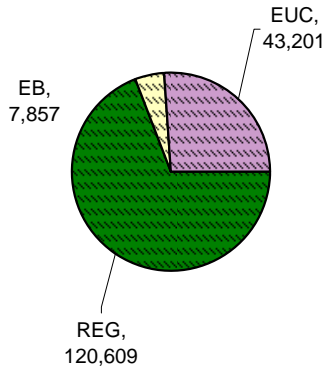
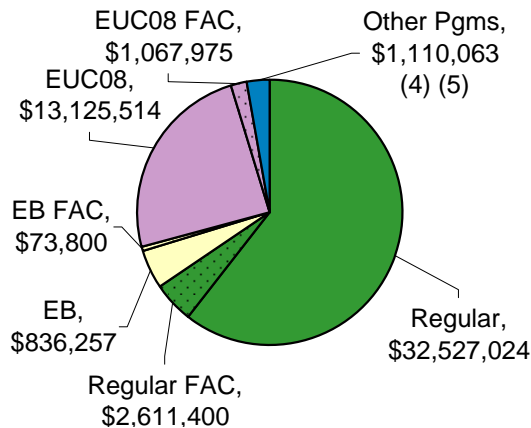
Announcement Date 12/12/2007

<b>EMERGENCY UNEMPLOYMENT COMPENSATION 08</b>			
Initial Claims (Excl. Liable)	3,072	2,739	53,610
Weeks Claimed (Excl. Liable)	43,201	40,647	823,243
Gross Amount of Payments (\$) <sup>4</sup>	14,193,489	13,183,111	257,392,406
EUC Benefit Payments (\$)	13,125,514	12,185,411	243,333,591
EUC Federal Additional Compensation (\$) <sup>3</sup>	1,067,975	997,700	14,058,815
Number Exhausting Tier 1 Benefits	971	1,126	26,136
Number Exhausting Tier 2 Benefits	711	794	12,369

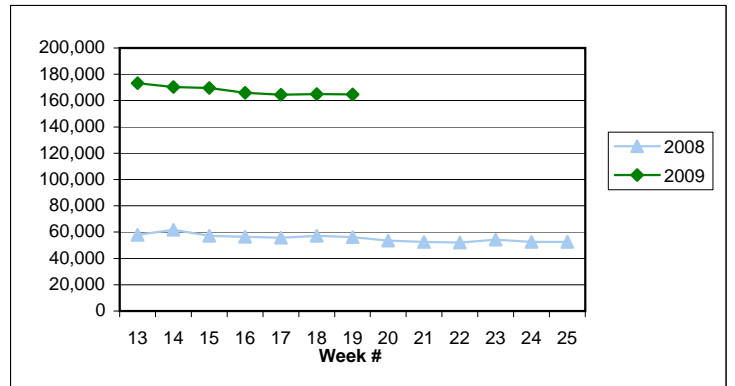
EUC begins 07/06/2008

**Benefits Paid By Program**

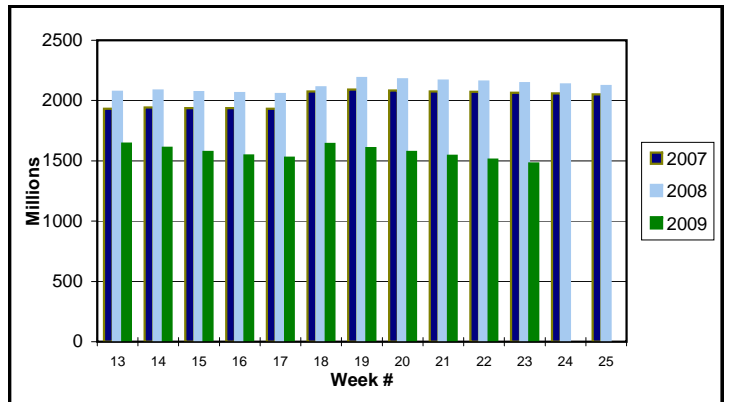
**Weeks Claimed - Program by Program**  
**Total: 165,839**



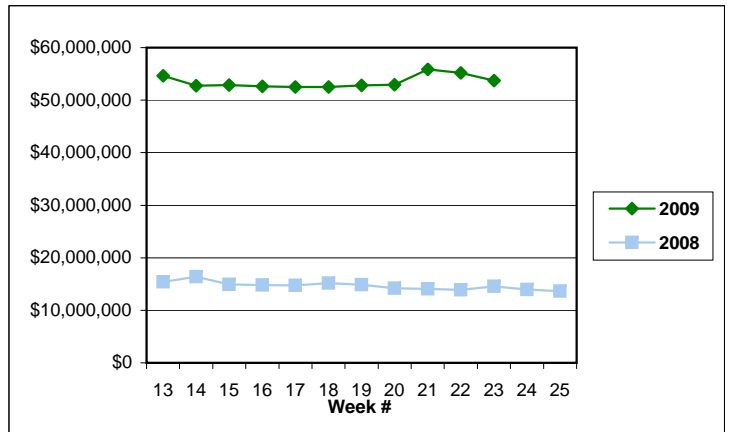
**Total Weeks Claimed (Regular + EB + EUC): 165,839**



**Trust Fund Balance: \$ 1,478.73 (in millions)**



**Total Benefits Paid: \$53,709,850**



<sup>3</sup> Federal Additional Compensation program start 3/2/2009 - Adds and additional \$25 to all claims

<sup>4</sup> Includes FAC Payments

<sup>5</sup> Other Programs Include AB, TRA, TAA, WS, TUI, SUD, SEA

For current and historic UI reports, visit:

<http://www.oregon.gov/EMPLOY/BUDGET/UI/index.shtml>

**(503) 947-1679**

[janet.l.orton@state.or.us](mailto:janet.l.orton@state.or.us)