

UNEMPLOYMENT INSURANCE STATISTICS

State of Oregon
EMPLOYMENT DEPARTMENT

UI Programs
Janet Orton

☎ (503) 947-1679

✉ janet.l.orton@state.or.us

🌐 www.WorkingInOregon.org

LABOR FORCE DATA		This Month	Last Month	Last Year
		May 2009	Apr 2009	May 2008
Oregon Civilian Labor Force		1,992,473	1,995,969	1,942,642
Total Number Unemployed		240,615	238,294	103,441

UNEMPLOYMENT RATES (CIVILIAN) (%)		Labor Force & Rate Data: www.QualityInfo.org		
Total Unemployment:	Oregon	12.1	11.9	5.3
	National	9.1	8.6	5.2
Seasonally Adjusted:	Oregon	12.4	11.8	5.7
	National	9.4	8.9	5.5

Week # :	24
Ending:	June 20, 2009

	THIS WEEK		LAST WEEK		This Month	Last Month	Last Year
	2009	2008	2009	2008	May 2009	Apr 2009	May 2008
UNEMPLOYMENT RATES (%)							
Insured Unemployment: Oregon	6.69	3.07	7.41	3.17	7.16	7.60	2.96
EB Trigger	7.32	3.25	7.39	3.28			
Adjusted Insured Unemployment	9.21	4.02	9.29	3.98			
National Average TUR ¹	12.00	5.50	11.50	5.50			
REGULAR CLAIMS (UI, UCFE, UCX)					May 2009	Apr 2009	May 2008
Initial Claims (Excl. Liable) ²	13,817	7,835	10,796	8,586	56,697	52,770	29,667
Oregon - New	6,727	4,154	4,180	4,230	20,674	22,815	13,907
Additional	6,660	3,472	6,145	4,137	33,804	28,040	14,861
Interstate - Agent	430	209	471	219	2,219	1,915	899
Interstate - Liable	301	190	276	216	1,376	1,260	654
Weeks Claimed (Excl. Liable) ²	113,428	52,462	114,781	54,216	612,803	522,222	217,919
Oregon	108,988	50,431	110,339	52,119	590,297	504,167	208,579
Interstate - Agent	4,440	2,031	4,442	2,097	22,506	18,055	9,340
Interstate - Liable	3,260	1,600	3,282	1,606	17,254	14,126	6,422
New Combined Wage Claims	201	151	184	123	972	940	625
Non-monetary Determinations & Redeter.	2,657	2,348	2,902	2,415	16,087	11,589	10,914
PAYMENTS: REGULAR BENEFITS							
First Payments	4,642	2,298	4,241	2,755	21,059	22,246	11,252
Checks Issued	110,200	49,010	112,069	51,734	601,831	506,995	207,167
Gross Amount of Payments (\$) ^{2,4}	34,585,802	13,407,340	35,138,424	14,040,580	187,994,425	158,335,959	55,725,244
Regular Benefit Payments (\$)	32,009,277	13,407,340	32,527,024	14,040,580	173,960,900	146,539,459	55,725,244
Regular Federal Additional Compensation (\$) ³	2,576,525	0	2,611,400	0	14,033,525	11,796,500	0
Average Check Amount (\$) ^{2,4}	313.85	273.56	313.54	271.40	312.37	312.30	268.99
Number Exhausting Benefits	3,242	1,057	3,092	1,009	14,843	9,444	4,469
TRUST FUND							
Balance (in Millions) (\$)	\$ 1,482.22	\$ 2,132.87	\$ 1,478.73	\$ 2,145.39	\$ 1,548.04	\$ 1,525.40	\$ 2,157.34

¹ NTUR: Unemployment Compensation Amendment of 1992 specifies that a 2 month average NTUR be used to determine duration levels.

² Excludes WORKSHARE program

³ Federal Additional Compensation program start 3/2/2009 - Adds and additional \$25 to all claims

⁴ Includes FAC Payments

For current and historic UI reports, visit:

<http://www.oregon.gov/EMPLOY/BUDGET/UI/index.shtml>

Week # :	24
Ending:	June 20, 2009

	This Week	Last Week	Cumulative
EXTENDED BENEFITS (UI, UCFE, UCX)			YTD
Initial Claims (Excl. Liable)	666	796	10,341
Weeks Claimed (Excl. Liable)	8,530	7,857	45,620
Gross Amount of Payments (\$) ⁴	2,946,415	2,877,696	18,319,450
EB Benefit Payments (\$)	2,718,790	2,654,396	16,872,975
EB Federal Additional Compensation (\$) ³	227,625	223,300	1,446,475
Number Exhausting Benefits	18	28	144

Oregon HEB Trigger "ON" 02/15/2009.

For a list of states ON EB, visit:

http://www.workforcesecurity.doleta.gov/unemploy/claims_arch.asp

Misc Additional Benefits			
Initial Claims (Excl. Liable)	6	2	62
Weeks Claimed (Excl. Liable)	71	32	764
Gross Amount of Payments (\$)	0	0	0
Number Exhausting Benefits	0	0	0

TRADE ADJUSTMENT ACT			
Training Plans	142	45	973
Initial Claims	70	55	2,878
Weeks Claimed	7	4	1,064
Gross Amount of TRA Payments (\$) ⁴	2,451	903	407,254
TRA Benefit Payments (\$)	2,276	853	386,479
TRA Federal Additional Compensation (\$) ³	175	50	20,775
Certifications	0	0	16
Gross Amount of TAA Payments (\$)	2,240	2,209	40,543

WORKSHARE PROGRAM			
Initial Claims	174	317	11,895
Weeks Claimed	5,016	5,288	114,580
Gross Amount of Payments (\$) ⁴	595,154	609,741	12,392,838
WS Benefit Payments (\$)	481,724	495,336	10,495,618
WS Federal Additional Compensation (\$)	113,430	114,405	1,897,220

TRAINING UI (TUI)			
Applications Accepted	197	133	3,416
Approved	175	118	2,831
Weeks Claimed	2,224	2,254	38,822
Gross Amount of Payments (\$) ⁴	796,508	797,849	13,897,406
TUI Benefit Payments (\$)	740,558	741,549	13,160,001
TUI Federal Additional Compensation (\$)	55,950	56,300	737,405

SUD			
Initial Claims	0	0	7
Weeks Claimed	6	5	97
Gross Amount of Payments (\$) ⁴	1,755	2,088	38,338
SUD Benefit Payments (\$)	1,605	1,913	35,613
SUD Federal Additional Compensation (\$)	150	175	2,725

³ Federal Additional Compensation program start 3/2/2009 - Adds and additional \$25 to all claims

⁴ Includes FAC Payments

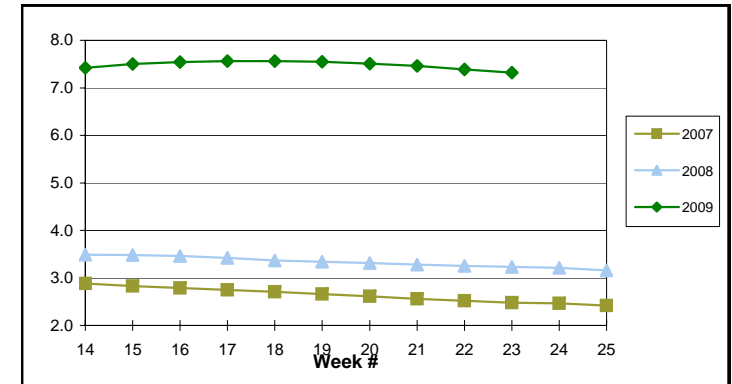
For current and historic UI reports, visit:

<http://www.oregon.gov/EMPLOY/BUDGET/UI/index.shtml>

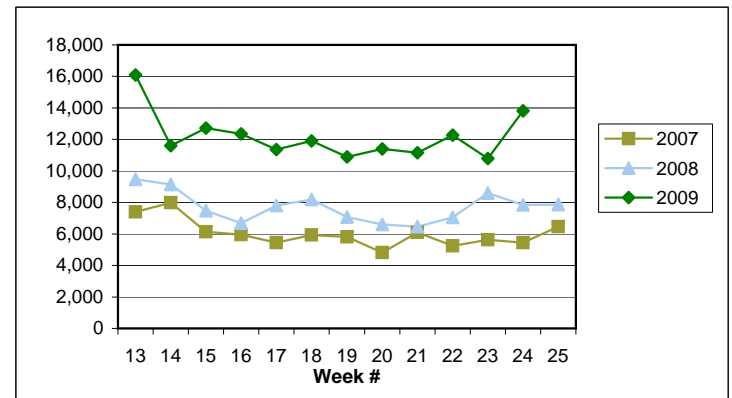
(503) 947-1679

✉ janet.l.orton@state.or.us

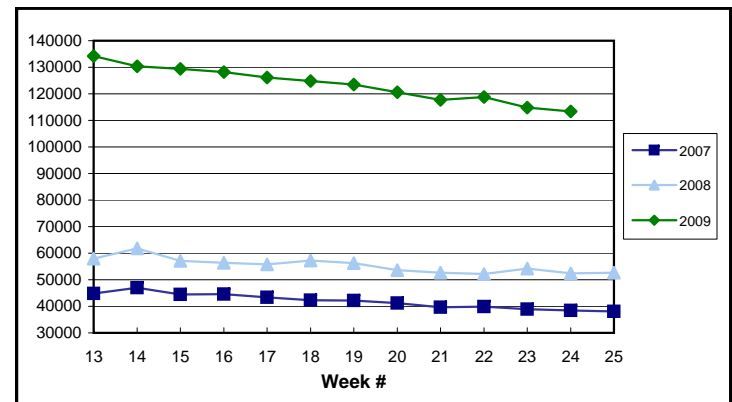
EB Trigger: 7.32



Regular Initial Claims: 13,817



Regular Weeks Claimed: 113,428



Week # : 24
Ending: June 20, 2009

This Week **Last Week** **Cumulative**
 YTD

SELF EMPLOYMENT (SEA) MONTHLY⁵		May 2009	Cumulative
Referred		63	238
Enrolled		102	351
Completed		30	108
Weeks Claimed	228	894	3,860
Gross Amount of Payments (\$) ⁴	97,647	397,559	1,636,987
SEA Benefit Payments (\$)	91,997	375,409	1,568,312
SEA Federal Additional Compensation (\$) ³	5,650	22,150	68,675

⁵ These are MONTHLY counts; data in **BOLD** is weekly.

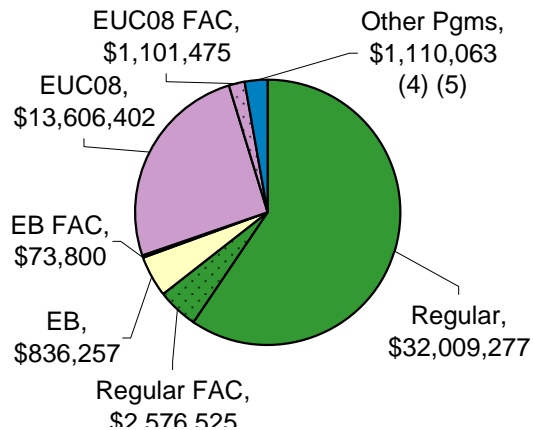
DISASTER UNEMPLOYMENT ASSISTANCE (DUA)			
Initial Claims	0	0	0
Weeks Claimed	0	0	0
Gross Amount of Payments (\$)	0	0	0
Insured	0	0	0
Self Employed	0	0	0
Number Exhausting Benefits	0	0	0

Announcement Date 12/12/2007

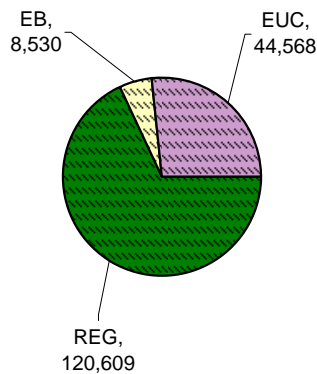
EMERGENCY UNEMPLOYMENT COMPENSATION 08			
Initial Claims (Excl. Liable)	3,037	3,072	56,647
Weeks Claimed (Excl. Liable)	44,568	43,201	867,811
Gross Amount of Payments (\$) ⁴	14,707,877	14,193,489	272,100,283
EUC Benefit Payments (\$)	13,606,402	13,125,514	256,939,993
EUC Federal Additional Compensation (\$) ³	1,101,475	1,067,975	15,160,290
Number Exhausting Tier 1 Benefits	1,037	971	27,173
Number Exhausting Tier 2 Benefits	703	711	13,072

EUC begins 07/06/2008

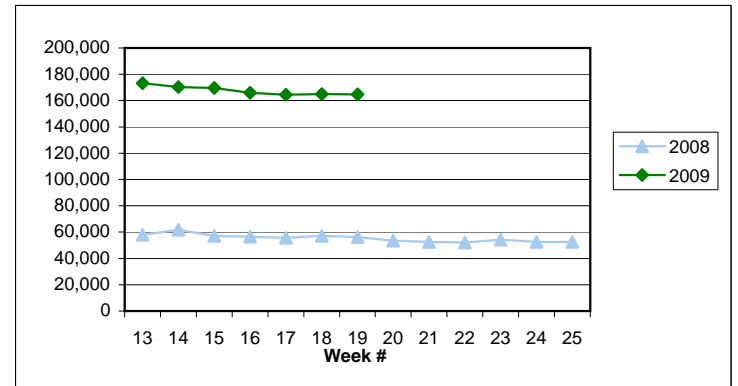
Benefits Paid By Program



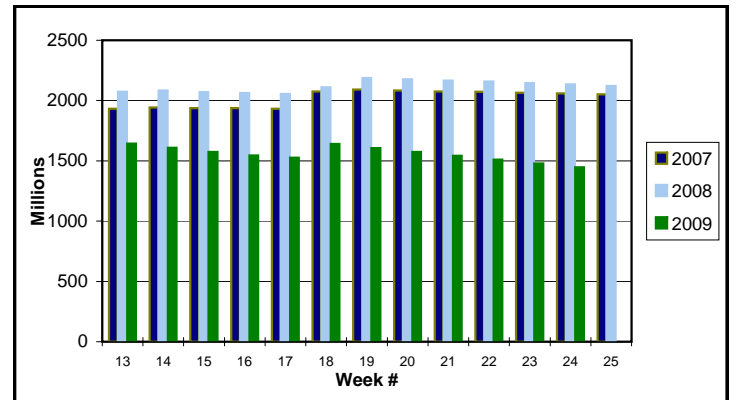
Weeks Claimed - Program by Program
 Total: 166,526



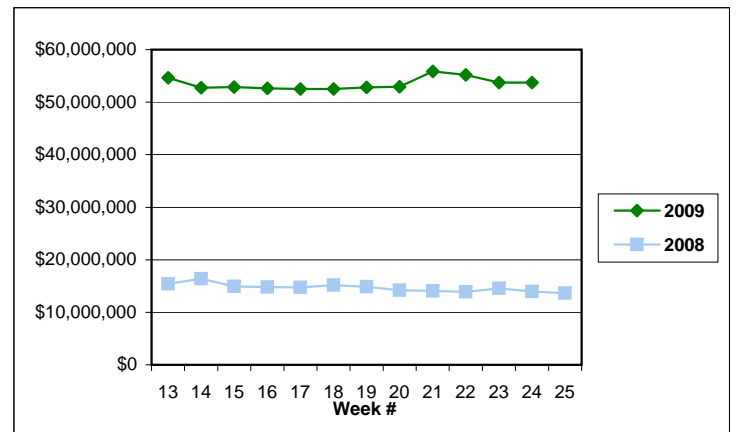
Total Weeks Claimed (Regular + EB + EUC): 166,526



Trust Fund Balance: \$ 1,447.59 (in millions)



Total Benefits Paid: \$53,735,849



³ Federal Additional Compensation program start 3/2/2009 - Adds and additional \$25 to all claims

⁴ Includes FAC Payments

⁵ Other Programs Include AB, TRA, TAA, WS, TUI, SUD, SEA

For current and historic UI reports, visit:

<http://www.oregon.gov/EMPLOY/BUDGET/UI/index.shtml>

(503) 947-1679

janet.l.orton@state.or.us