

UNEMPLOYMENT INSURANCE STATISTICS

State of Oregon
EMPLOYMENT DEPARTMENT

UI Programs
Janet Orton

(503) 947-1679

janet.l.orton@state.or.us

www.WorkingInOregon.org

LABOR FORCE DATA		This Month	Last Month	Last Year
		May 2009	Apr 2009	May 2008
Oregon Civilian Labor Force		1,992,473	1,995,969	1,942,642
Total Number Unemployed		240,615	238,294	103,441

UNEMPLOYMENT RATES (CIVILIAN) (%)		Labor Force & Rate Data: www.QualityInfo.org		
		This Month	Last Month	Last Year
Total Unemployment:	Oregon	12.1	11.9	5.3
	National	9.1	8.6	5.2
Seasonally Adjusted:	Oregon	12.4	11.8	5.7
	National	9.4	8.9	5.5

Week # :	25					This Month	Last Month	Last Year		
Ending:	June 27, 2009	THIS WEEK		LAST WEEK		May 2009	Apr 2009	May 2008		
		2009	2008	2009	2008	May 2009	Apr 2009	May 2008		
UNEMPLOYMENT RATES (%)								This Month	Last Month	Last Year
Insured Unemployment: Oregon		6.65	3.08	6.69	3.07	7.16	7.60	2.96		
EB Trigger		7.25	3.23	7.32	3.25					
Adjusted Insured Unemployment		9.14	3.99	9.21	4.02					
National Average TUR ¹		12.00	5.60	12.00	5.50					
REGULAR CLAIMS (UI, UCFFE, UCX)						May 2009	Apr 2009	May 2008		
Initial Claims (Excl. Liable) ²		11,488	7,864	13,817	7,835	56,697	52,770	29,667		
Oregon - New		4,556	4,144	6,727	4,154	20,674	22,815	13,907		
Additional		6,454	3,474	6,660	3,472	33,804	28,040	14,861		
Interstate - Agent		478	246	430	209	2,219	1,915	899		
Interstate - Liable		287	187	301	190	1,376	1,260	654		
Weeks Claimed (Excl. Liable) ²		112,637	52,598	113,428	52,462	612,803	522,222	217,919		
Oregon		108,179	50,659	108,988	50,431	590,297	504,167	208,579		
Interstate - Agent		4,458	1,939	4,440	2,031	22,506	18,055	9,340		
Interstate - Liable		3,180	1,626	3,260	1,600	17,254	14,126	6,422		
New Combined Wage Claims		173	139	201	151	972	940	625		
Non-monetary Determinations & Redeter.		2,741	2,304	2,657	2,348	16,087	11,589	10,914		
PAYMENTS: REGULAR BENEFITS										
First Payments		4,140	2,830	4,642	2,298	21,059	22,246	11,252		
Checks Issued		107,658	48,370	110,200	49,010	601,831	506,995	207,167		
Gross Amount of Payments (\$) ^{2,4}		33,859,203	13,143,162	34,585,802	13,407,340	187,994,425	158,335,959	55,725,244		
Regular Benefit Payments (\$)		31,332,028	13,143,162	32,009,277	13,407,340	173,960,900	146,539,459	55,725,244		
Regular Federal Additional Compensation (\$) ³		2,527,175	0	2,576,525	0	14,033,525	11,796,500	0		
Average Check Amount (\$) ^{2,4}		314.51	271.72	313.85	273.56	312.37	312.30	268.99		
Number Exhausting Benefits		3,183	985	3,242	1,057	14,843	9,444	4,469		
TRUST FUND										
Balance (in Millions) (\$)		\$ 1,448.74	\$ 2,120.98	\$ 1,447.59	\$ 2,132.87	\$ 1,548.04	\$ 1,525.40	\$ 2,157.34		

¹ NTUR: Unemployment Compensation Amendment of 1992 specifies that a 2 month average NTUR be used to determine duration levels.

² Excludes WORKSHARE program

³ Federal Additional Compensation program start 3/2/2009 - Adds and additional \$25 to all claims

⁴ Includes FAC Payments

For current and historic UI reports, visit:

<http://www.oregon.gov/EMPLOY/BUDGET/UI/index.shtml>

Week # :	25
Ending:	June 27, 2009

	This Week	Last Week	Cumulative
EXTENDED BENEFITS (UI, UCFE, UCX)			YTD
Initial Claims (Excl. Liable)	704	666	11,045
Weeks Claimed (Excl. Liable)	8,965	8,530	54,585
Gross Amount of Payments (\$) ⁴	3,002,355	2,946,415	21,321,805
EB Benefit Payments (\$)	2,768,805	2,718,790	19,641,780
EB Federal Additional Compensation (\$) ³	233,550	227,625	1,680,025
Number Exhausting Benefits	48	18	213

Oregon HEB Trigger "ON" 02/15/2009.

For a list of states ON EB, visit:

http://www.workforcesecurity.doleta.gov/unemploy/claims_arch.asp

Misc Additional Benefits			
Initial Claims (Excl. Liable)	1	6	63
Weeks Claimed (Excl. Liable)	30	71	794
Gross Amount of Payments (\$)	0	0	0
Number Exhausting Benefits	0	0	0

TRADE ADJUSTMENT ACT			
Training Plans	121	142	1,094
Initial Claims	56	70	2,934
Weeks Claimed	2	7	1,066
Gross Amount of TRA Payments (\$) ⁴	573	2,451	407,827
TRA Benefit Payments (\$)	523	2,276	387,002
TRA Federal Additional Compensation (\$) ³	50	175	20,825
Certifications	1	0	17
Gross Amount of TAA Payments (\$)	1,390	2,240	42,286

WORKSHARE PROGRAM			
Initial Claims	273	174	12,168
Weeks Claimed	5,861	5,016	120,441
Gross Amount of Payments (\$) ⁴	663,797	595,154	13,056,635
WS Benefit Payments (\$)	535,073	481,724	9,872,310
WS Federal Additional Compensation (\$)	128,724	113,430	3,184,325

TRAINING UI (TUI)			
Applications Accepted	115	197	3,531
Approved	101	175	2,932
Weeks Claimed	2,067	2,224	40,889
Gross Amount of Payments (\$) ⁴	705,301	796,508	14,602,707
TUI Benefit Payments (\$)	656,076	740,558	13,816,077
TUI Federal Additional Compensation (\$)	49,225	55,950	786,630

SUD			
Initial Claims	0	0	7
Weeks Claimed	2	6	99
Gross Amount of Payments (\$) ⁴	478	1,755	38,816
SUD Benefit Payments (\$)	428	1,605	36,041
SUD Federal Additional Compensation (\$)	50	150	2,775

³ Federal Additional Compensation program start 3/2/2009 - Adds and additional \$25 to all claims

⁴ Includes FAC Payments

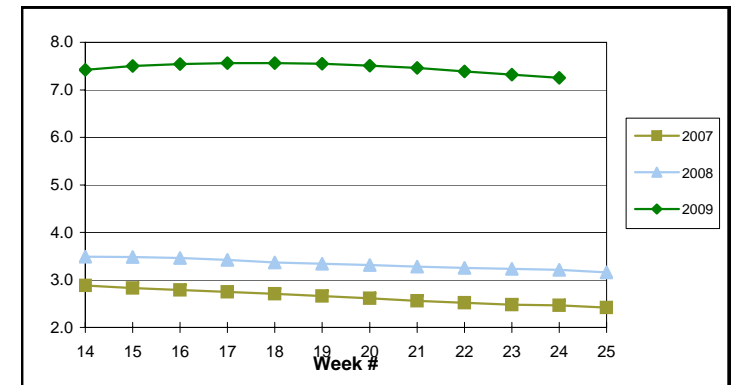
For current and historic UI reports, visit:

<http://www.oregon.gov/EMPLOY/BUDGET/UI/index.shtml>

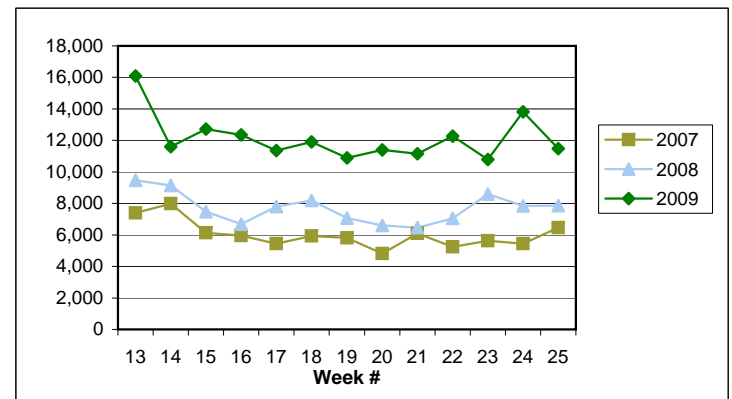
(503) 947-1679

✉ janet.l.orton@state.or.us

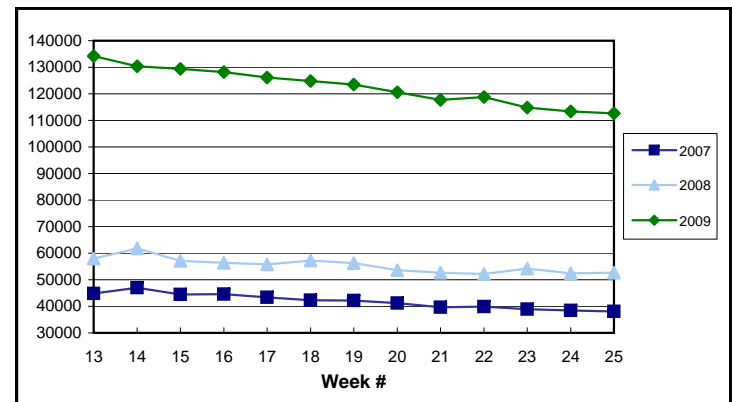
EB Trigger: **7.25**



Regular Initial Claims: **11,488**



Regular Weeks Claimed: **112,637**



Week # : 25
Ending: June 27, 2009

This Week Last Week Cumulative
 YTD

SELF EMPLOYMENT (SEA) MONTHLY ⁵		May 2009	Cumulative
Referred		63	238
Enrolled		102	351
Completed		30	108
Weeks Claimed	218	894	4,078
Gross Amount of Payments (\$) ⁴	104,206	397,559	1,741,193
SEA Benefit Payments (\$)	98,356	375,409	1,666,668
SEA Federal Additional Compensation (\$) ³	5,850	22,150	74,525

⁵ These are MONTHLY counts; data in **BOLD** is weekly.

DISASTER UNEMPLOYMENT ASSISTANCE (DUA)			
Initial Claims	0	0	0
Weeks Claimed	0	0	0
Gross Amount of Payments (\$)	0	0	0
Insured	0	0	0
Self Employed	0	0	0
Number Exhausting Benefits	0	0	0

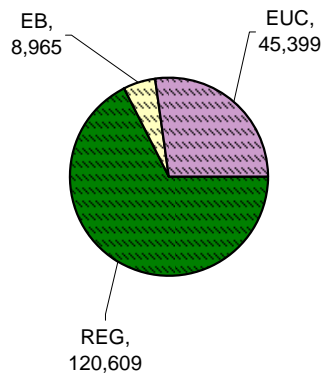
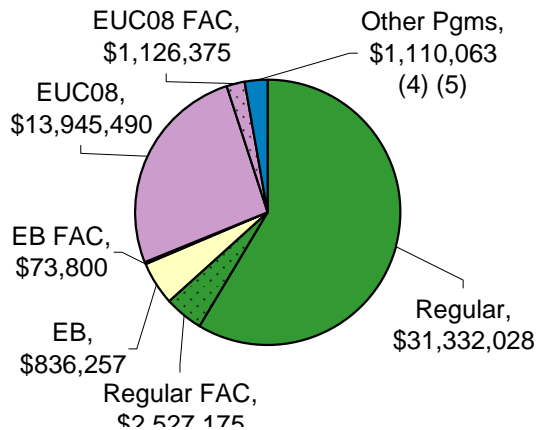
Announcement Date 12/12/2007

EMERGENCY UNEMPLOYMENT COMPENSATION 08			
Initial Claims (Excl. Liable)	3,394	3,037	60,041
Weeks Claimed (Excl. Liable)	45,399	44,568	913,210
Gross Amount of Payments (\$) ⁴	15,071,865	14,707,877	287,172,148
EUC Benefit Payments (\$)	13,945,490	13,606,402	270,885,483
EUC Federal Additional Compensation (\$) ³	1,126,375	1,101,475	16,286,665
Number Exhausting Tier 1 Benefits	922	1,037	29,238
Number Exhausting Tier 2 Benefits	708	703	14,478

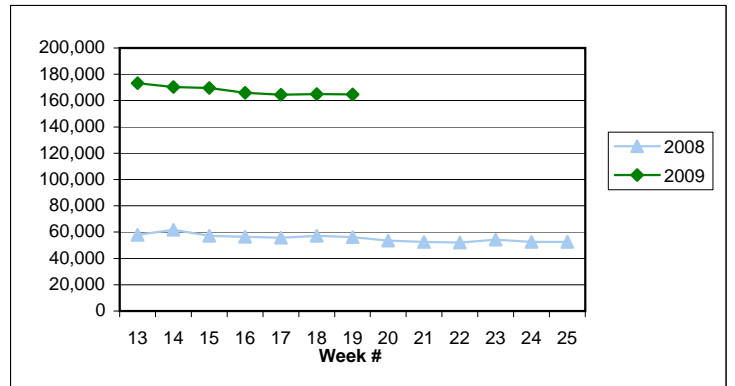
EUC begins 07/06/2008

Benefits Paid By Program
Total Benefits Paid: \$53,409,168

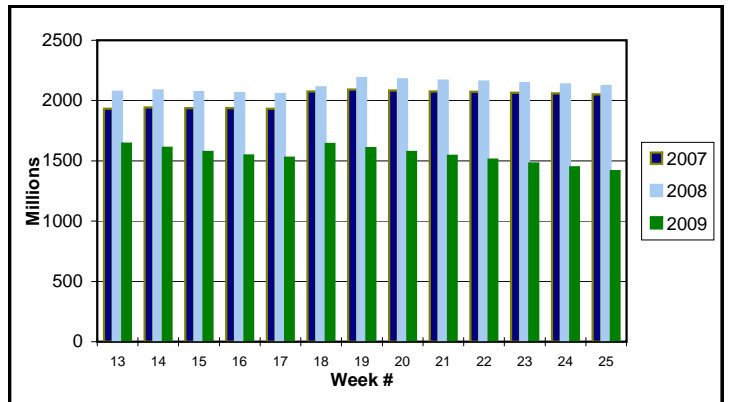
Weeks Claimed - Program by Program
Total: 167,001



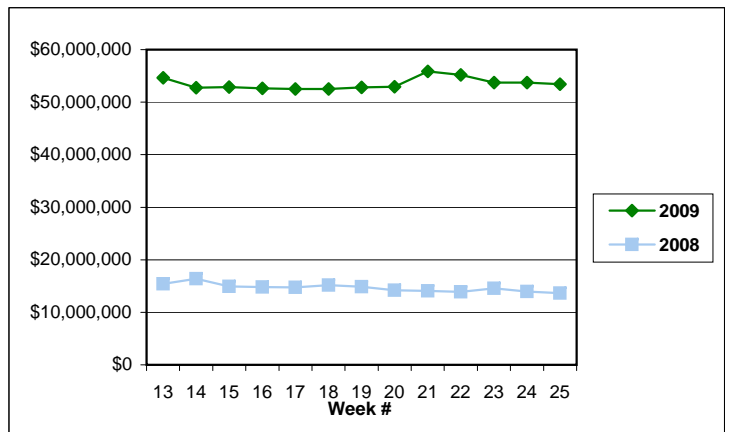
Total Weeks Claimed (Regular + EB + EUC): 167,001



Trust Fund Balance: \$ 1,414.10 (in millions)



Total Benefits Paid: \$53,409,168



³ Federal Additional Compensation program start 3/2/2009 - Adds and additional \$25 to all claims

⁴ Includes FAC Payments

⁵ Other Programs Include AB, TRA, TAA, WS, TUI, SUD, SEA

For current and historic UI reports, visit:

<http://www.oregon.gov/EMPLOY/BUDGET/UI/index.shtml>

(503) 947-1679

janet.l.orton@state.or.us