

UNEMPLOYMENT INSURANCE STATISTICS

State of Oregon
EMPLOYMENT DEPARTMENT

UI Programs
Janet Orton

(503) 947-1679

janet.l.orton@state.or.us

www.WorkingInOregon.org

LABOR FORCE DATA	This Month	Last Month	Last Year
	May 2009	Apr 2009	May 2008
Oregon Civilian Labor Force	1,992,473	1,995,969	1,942,642
Total Number Unemployed	240,615	238,294	103,441

UNEMPLOYMENT RATES (CIVILIAN) (%)		Labor Force & Rate Data: www.QualityInfo.org		
Total Unemployment:	Oregon	12.1	11.9	5.3
	National	9.1	8.6	5.2
Seasonally Adjusted:	Oregon	12.4	11.8	5.7
	National	9.4	8.9	5.5

Week # :	26
Ending:	July 4, 2009

	THIS WEEK		LAST WEEK		This Month	Last Month	Last Year
	2009	2008	2009	2008	June 2009	May 2009	June 2008
UNEMPLOYMENT RATES (%)							
Insured Unemployment: Oregon	6.48	3.08	6.65	3.08	6.83	7.16	2.91
EB Trigger	7.14	3.21	7.25	3.23			
Adjusted Insured Unemployment	9.03	3.97	9.14	3.99			
National Average TUR ¹	12.00	5.60	12.00	5.60			
REGULAR CLAIMS (UI, UCFFE, UCX)					June 2009	May 2009	June 2008
Initial Claims (Excl. Liable) ²	10,039	6,908	11,488	7,864	48,368	56,697	34,193
Oregon - New	3,576	3,242	4,556	4,144	20,432	20,674	16,708
Additional	6,027	3,402	6,454	3,474	26,140	33,804	16,547
Interstate - Agent	436	264	478	246	1,796	2,219	938
Interstate - Liable	240	183	287	187	1,159	1,376	834
Weeks Claimed (Excl. Liable) ²	109,978	52,685	112,637	52,598	459,620	612,803	254,337
Oregon	105,644	50,616	108,179	50,659	441,830	590,297	245,765
Interstate - Agent	4,334	2,069	4,458	1,939	17,790	22,506	8,572
Interstate - Liable	3,229	1,613	3,180	1,626	13,087	17,254	7,790
New Combined Wage Claims	157	126	173	139	749	972	562
Non-monetary Determinations & Redeter.	1,362	2,348	2,741	2,304	11,585	16,087	9,742
PAYMENTS: REGULAR BENEFITS							
First Payments	4,179	2,698	4,140	2,830	16,967	21,059	12,426
Checks Issued	104,202	48,630	107,658	48,370	446,462	601,831	237,619
Gross Amount of Payments (\$) ^{2,4}	32,782,500	13,124,760	33,859,203	13,143,162	140,163,484	187,994,425	64,482,521
Regular Benefit Payments (\$)	30,333,100	13,124,760	31,332,028	13,143,162	129,734,134	173,960,900	64,482,521
Regular Federal Additional Compensation (\$) ³	2,449,400	0	2,527,175	0	10,429,350	14,033,525	0
Average Check Amount (\$) ^{2,4}	314.61	269.89	314.51	271.72	313.94	312.37	271.37
Number Exhausting Benefits	3,020	914	3,183	985	12,645	14,843	4,689
TRUST FUND							
Balance (in Millions) (\$)	\$ 1,433.95	\$ 2,095.20	\$ 1,414.10	\$ 2,120.98	\$ 1,423.77	\$ 1,548.04	\$ 2,095.20

¹ NTUR: Unemployment Compensation Amendment of 1992 specifies that a 2 month average NTUR be used to determine duration levels.

² Excludes WORKSHARE program

³ Federal Additional Compensation program start 3/2/2009 - Adds and additional \$25 to all claims

⁴ Includes FAC Payments

For current and historic UI reports, visit:

<http://www.oregon.gov/EMPLOY/BUDGET/UI/index.shtml>

Week # :	26
Ending:	July 4, 2009

	This Week	Last Week	Cumulative
EXTENDED BENEFITS (UI, UCFE, UCX)	YTD		
Initial Claims (Excl. Liable)	529	704	11,574
Weeks Claimed (Excl. Liable)	9,259	8,965	63,844
Gross Amount of Payments (\$) ⁴	3,028,214	3,002,355	243,500,198
EB Benefit Payments (\$)	2,794,664	2,768,805	241,586,623
EB Federal Additional Compensation (\$) ³	233,550	233,550	1,913,575
Number Exhausting Benefits	112	48	329

Oregon HEB Trigger "ON" 02/15/2009.

For a list of states ON EB, visit:

http://www.workforcesecurity.doleta.gov/unemploy/claims_arch.asp

Misc Additional Benefits			
Initial Claims (Excl. Liable)	2	1	65
Weeks Claimed (Excl. Liable)	66	30	860
Gross Amount of Payments (\$)	0	0	0
Number Exhausting Benefits	0	0	0

TRADE ADJUSTMENT ACT			
Training Plans	12	121	1,106
Initial Claims	27	56	2,961
Weeks Claimed	5	2	1,071
Gross Amount of TRA Payments (\$) ⁴	1,907	573	409,734
TRA Benefit Payments (\$)	1,782	523	388,784
TRA Federal Additional Compensation (\$) ³	125	50	20,950
Certifications	1	1	18
Gross Amount of TAA Payments (\$)	353	1,390	42,286

WORKSHARE PROGRAM			
Initial Claims	387	273	12,555
Weeks Claimed	4,590	5,861	125,031
Gross Amount of Payments (\$) ⁴	541,090	663,797	13,597,725
WS Benefit Payments (\$)	434,135	535,073	11,464,826
WS Federal Additional Compensation (\$)	106,955	128,724	2,132,899

TRAINING UI (TUI)			
Applications Accepted	78	115	3,609
Approved	74	101	3,006
Weeks Claimed	1,939	2,067	42,828
Gross Amount of Payments (\$) ⁴	647,679	705,301	15,250,386
TUI Benefit Payments (\$)	602,754	656,076	14,418,831
TUI Federal Additional Compensation (\$)	44,925	49,225	831,555

SUD			
Initial Claims	1	0	8
Weeks Claimed	1	2	100
Gross Amount of Payments (\$) ⁴	244	478	39,060
SUD Benefit Payments (\$)	219	428	36,260
SUD Federal Additional Compensation (\$)	25	50	2,800

³ Federal Additional Compensation program start 3/2/2009 - Adds and additional \$25 to all claims

⁴ Includes FAC Payments

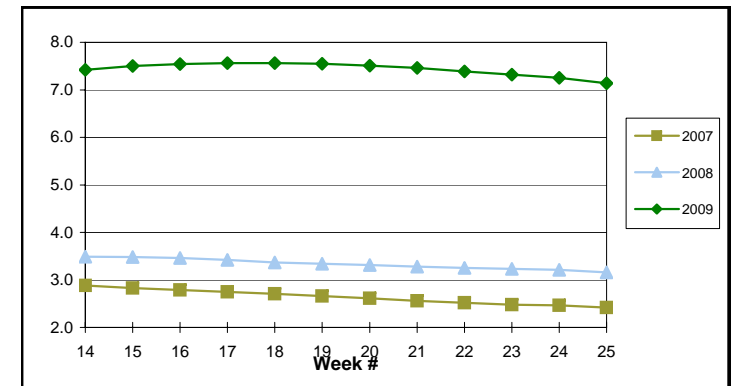
For current and historic UI reports, visit:

<http://www.oregon.gov/EMPLOY/BUDGET/UI/index.shtml>

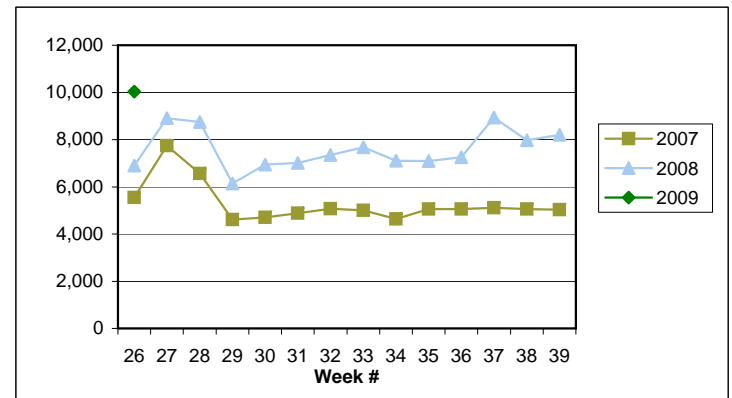
(503) 947-1679

✉ janet.l.orton@state.or.us

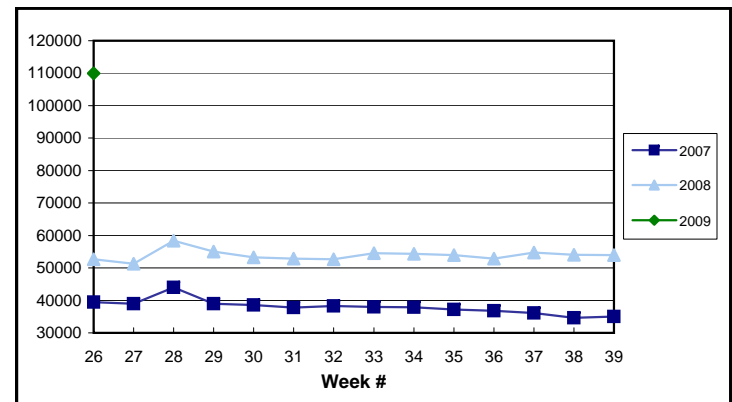
EB Trigger: **7.14**



Regular Initial Claims: **10,039**



Regular Weeks Claimed: **109,978**



Week # : 26
Ending: July 4, 2009

This Week Last Week Cumulative
 YTD

SELF EMPLOYMENT (SEA) MONTHLY⁵		June 2009	Cumulative
Referred		69	307
Enrolled		103	454
Completed		19	127
Weeks Claimed	229	872	4,307
Gross Amount of Payments (\$) ⁴	98,565	384,434	1,839,758
SEA Benefit Payments (\$)	93,015	362,659	1,759,683
SEA Federal Additional Compensation (\$) ³	5,550	21,775	80,075

⁵ These are MONTHLY counts; data in BOLD is weekly.

DISASTER UNEMPLOYMENT ASSISTANCE (DUA)			
Initial Claims	0	0	0
Weeks Claimed	0	0	0
Gross Amount of Payments (\$)	0	0	0
Insured	0	0	0
Self Employed	0	0	0
Number Exhausting Benefits	0	0	0

Announcement Date 12/12/2007

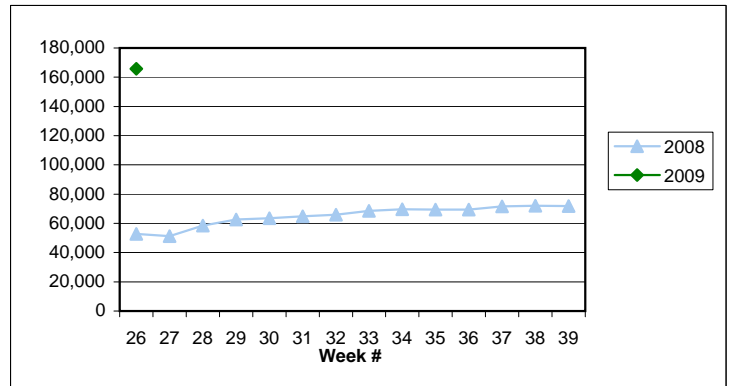
EMERGENCY UNEMPLOYMENT COMPENSATION 08			
Initial Claims (Excl. Liable)	2,521	3,394	62,562
Weeks Claimed (Excl. Liable)	46,590	45,399	959,800
Gross Amount of Payments (\$) ⁴	15,259,633	15,071,865	302,431,781
EUC Benefit Payments (\$)	14,119,808	13,945,490	285,005,291
EUC Federal Additional Compensation (\$) ³	1,139,825	1,126,375	17,426,490
Number Exhausting Tier 1 Benefits	1,196	922	30,281
Number Exhausting Tier 2 Benefits	724	708	15,053

EUC begins 07/06/2008

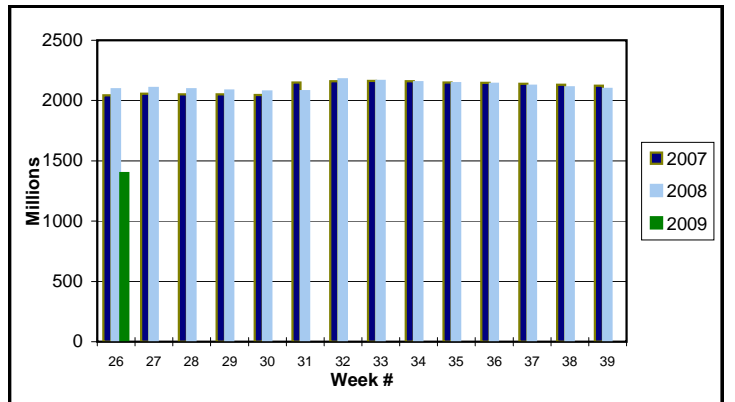
Benefits Paid By Program
Total Benefits Paid: \$52,360,185

Weeks Claimed - Program by Program
Total: 165,827

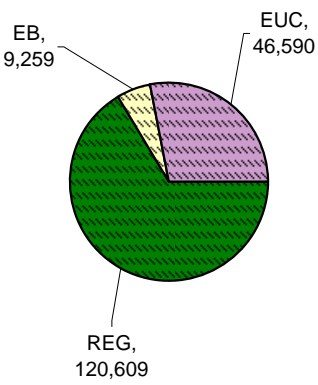
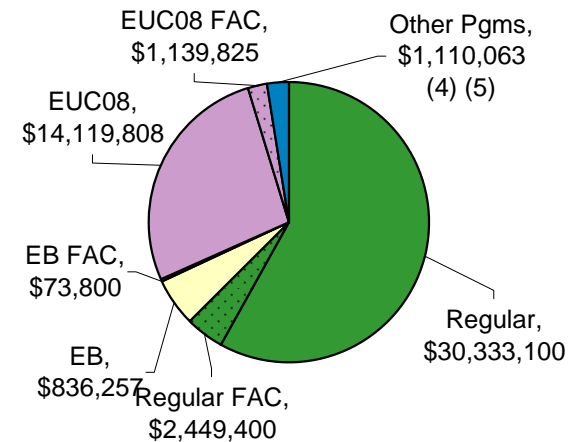
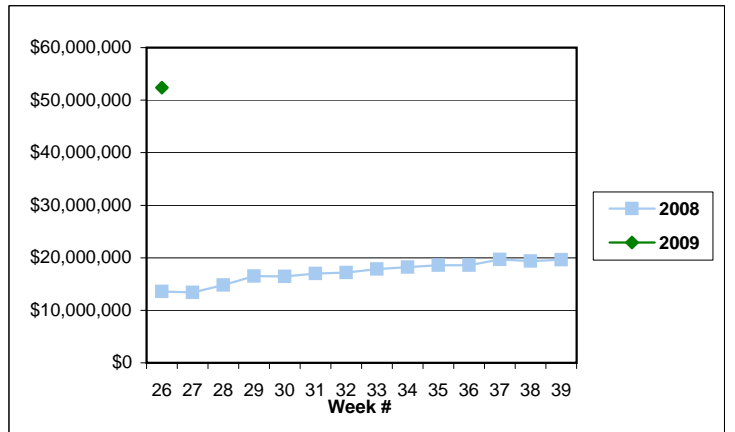
Total Weeks Claimed (Regular + EB + EUC): 165,827



Trust Fund Balance: \$ 1,399.31 (in millions)



Total Benefits Paid: \$52,360,185



³ Federal Additional Compensation program start 3/2/2009 - Adds and additional \$25 to all claims

⁴ Includes FAC Payments

⁵ Other Programs Include AB, TRA, TAA, WS, TUI, SUD, SEA

For current and historic UI reports, visit:

<http://www.oregon.gov/EMPLOY/BUDGET/UI/index.shtml>

(503) 947-1679

janet.l.orton@state.or.us