

UNEMPLOYMENT INSURANCE STATISTICS

State of Oregon
EMPLOYMENT DEPARTMENT

UI Programs
Janet Orton

(503) 947-1679

janet.l.orton@state.or.us

www.WorkingInOregon.org

LABOR FORCE DATA		This Month	Last Month	Last Year
		June 2009	May 2009	June 2008
Oregon Civilian Labor Force		1,995,952	1,987,520	1,964,967
Total Number Unemployed		241,156	236,210	113,722

UNEMPLOYMENT RATES (CIVILIAN) (%)		Labor Force & Rate Data: www.QualityInfo.org		
		This Month	Last Month	Last Year
Total Unemployment:	Oregon	12.1	11.9	5.8
	National	9.7	9.1	5.7
Seasonally Adjusted:	Oregon	12.2	12.2	5.9
	National	9.5	9.4	5.5

Week # :	27
Ending:	July 11, 2009

	THIS WEEK		LAST WEEK		This Month	Last Month	Last Year
	2009	2008	2009	2008	June 2009	May 2009	June 2008
UNEMPLOYMENT RATES (%)							
Insured Unemployment: Oregon	6.80	3.00	6.48	3.08	6.83	7.16	2.91
EB Trigger	7.11	3.16	7.14	3.21			
Adjusted Insured Unemployment	9.39	3.92	9.03	3.97			
National Average TUR ¹	12.00	5.60	12.00	5.60			
REGULAR CLAIMS (UI, UCFFE, UCX)					June 2009	May 2009	June 2008
Initial Claims (Excl. Liable) ²	11,920	8,904	10,039	6,908	48,368	56,697	34,193
Oregon - New	4,542	4,147	3,576	3,242	20,432	20,674	16,708
Additional	6,964	4,491	6,027	3,402	26,140	33,804	16,547
Interstate - Agent	414	266	436	264	1,796	2,219	938
Interstate - Liable	273	323	240	183	1,159	1,376	834
Weeks Claimed (Excl. Liable) ²	114,334	51,282	109,978	52,685	459,620	612,803	254,337
Oregon	110,013	49,543	105,644	50,616	441,830	590,297	245,765
Interstate - Agent	4,321	1,739	4,334	2,069	17,790	22,506	8,572
Interstate - Liable	3,362	1,543	3,229	1,613	13,087	17,254	7,790
New Combined Wage Claims	202	96	157	126	749	972	562
Non-monetary Determinations & Redeter.	2,694	1,944	1,362	2,348	11,585	16,087	9,742
PAYMENTS: REGULAR BENEFITS							
First Payments	4,166	2,760	4,179	2,698	16,967	21,059	12,426
Checks Issued	107,325	48,030	104,202	48,630	446,462	601,831	237,619
Gross Amount of Payments (\$) ^{2,4}	34,086,720	12,957,059	32,782,500	13,124,760	140,163,484	187,994,425	64,482,521
Regular Benefit Payments (\$)	31,556,795	12,957,059	30,333,100	13,124,760	129,734,134	173,960,900	64,482,521
Regular Federal Additional Compensation (\$) ³	2,529,925	0	2,449,400	0	10,429,350	14,033,525	0
Average Check Amount (\$) ^{2,4}	317.60	269.77	314.61	269.89	313.94	312.37	271.37
Number Exhausting Benefits	2,745	844	3,020	914	12,645	14,843	4,689
TRUST FUND							
Balance (in Millions) (\$)	\$ 1,401.95	\$ 2,104.27	\$ 1,399.31	\$ 2,095.20	\$ 1,423.77	\$ 1,548.04	\$ 2,095.20

¹ NTUR: Unemployment Compensation Amendment of 1992 specifies that a 2 month average NTUR be used to determine duration levels.

² Excludes WORKSHARE program

³ Federal Additional Compensation program start 3/2/2009 - Adds and additional \$25 to all claims

⁴ Includes FAC Payments

For current and historic UI reports, visit:

<http://www.oregon.gov/EMPLOY/BUDGET/UI/index.shtml>

Week # :	27
Ending:	July 11, 2009

	This Week	Last Week	Cumulative
EXTENDED BENEFITS (UI, UCFE, UCX)			YTD
Initial Claims (Excl. Liable)	611	529	12,185
Weeks Claimed (Excl. Liable)	9,566	9,259	73,410
Gross Amount of Payments (\$) ⁴	3,213,445	3,028,214	27,563,464
EB Benefit Payments (\$)	2,964,870	2,794,664	25,401,314
EB Federal Additional Compensation (\$) ³	248,575	233,550	2,162,150
Number Exhausting Benefits	29	112	387

Oregon HEB Trigger "ON" 02/15/2009.

For a list of states ON EB, visit:

http://www.workforcesecurity.doleta.gov/unemploy/claims_arch.asp

Misc Additional Benefits			
Initial Claims (Excl. Liable)	2	2	67
Weeks Claimed (Excl. Liable)	46	66	906
Gross Amount of Payments (\$)	0	0	0
Number Exhausting Benefits	0	0	0

TRADE ADJUSTMENT ACT			
Training Plans	17	12	1,134
Initial Claims	70	27	3,031
Weeks Claimed	1	5	1,072
Gross Amount of TRA Payments (\$) ⁴	372	1,907	410,106
TRA Benefit Payments (\$)	372	1,782	389,156
TRA Federal Additional Compensation (\$) ³	0	125	20,950
Certifications	18	1	18
Gross Amount of TAA Payments (\$)	1,462	353	43,748

WORKSHARE PROGRAM			
Initial Claims	287	387	13,176
Weeks Claimed	4,873	4,590	134,352
Gross Amount of Payments (\$) ⁴	543,388	541,090	14,141,113
WS Benefit Payments (\$)	440,988	434,135	11,905,814
WS Federal Additional Compensation (\$)	102,400	106,955	2,235,299

TRAINING UI (TUI)			
Applications Accepted	129	78	3,738
Approved	124	74	3,130
Weeks Claimed	1,925	1,939	44,753
Gross Amount of Payments (\$) ⁴	702,293	647,679	15,952,679
TUI Benefit Payments (\$)	657,293	602,754	15,076,124
TUI Federal Additional Compensation (\$)	45,000	44,925	876,555

SUD			
Initial Claims	0	1	8
Weeks Claimed	0	1	100
Gross Amount of Payments (\$) ⁴	377	244	39,437
SUD Benefit Payments (\$)	327	219	36,587
SUD Federal Additional Compensation (\$)	50	25	2,850

³ Federal Additional Compensation program start 3/2/2009 - Adds and additional \$25 to all claims

⁴ Includes FAC Payments

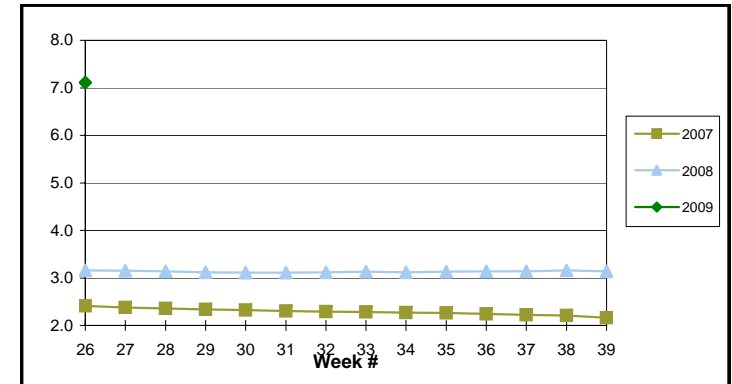
For current and historic UI reports, visit:

<http://www.oregon.gov/EMPLOY/BUDGET/UI/index.shtml>

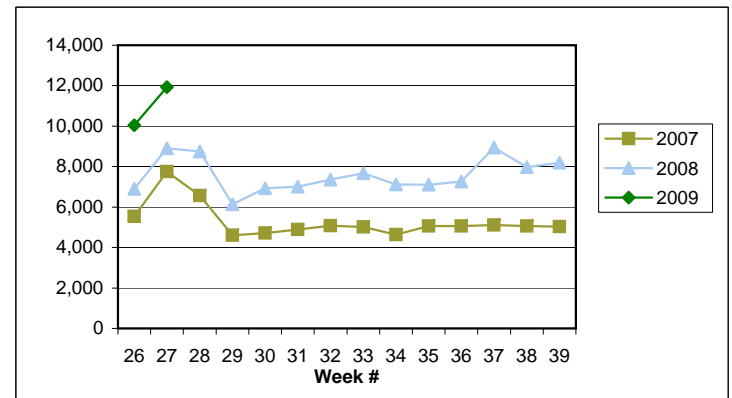
(503) 947-1679

✉ janet.l.orton@state.or.us

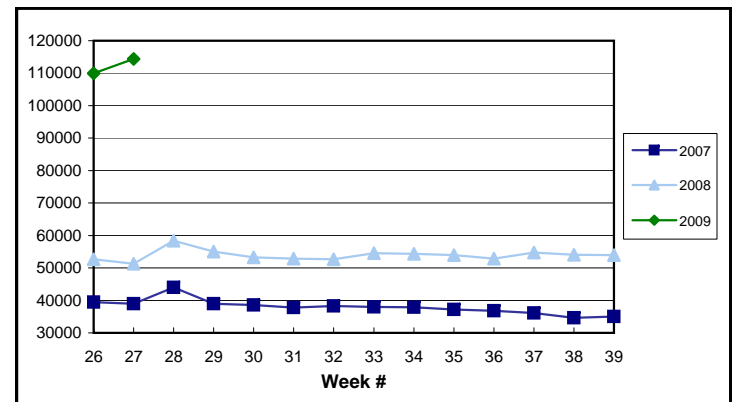
EB Trigger: **7.11**



Regular Initial Claims: **11,920**



Regular Weeks Claimed: **114,334**



Week # : 27
Ending: July 11, 2009

This Week Last Week Cumulative
 YTD

SELF EMPLOYMENT (SEA) MONTHLY⁵		June 2009	Cumulative
Referred		69	307
Enrolled		103	454
Completed		19	127
Weeks Claimed	266	872	4,573
Gross Amount of Payments (\$) ⁴	111,385	384,434	1,951,143
SEA Benefit Payments (\$)	105,135	362,659	1,864,818
SEA Federal Additional Compensation (\$) ³	6,250	21,775	86,325

⁵ These are MONTHLY counts; data in BOLD is weekly.

DISASTER UNEMPLOYMENT ASSISTANCE (DUA)			
Initial Claims	0	0	0
Weeks Claimed	0	0	0
Gross Amount of Payments (\$)	0	0	0
Insured	0	0	0
Self Employed	0	0	0
Number Exhausting Benefits	0	0	0

Announcement Date 12/12/2007

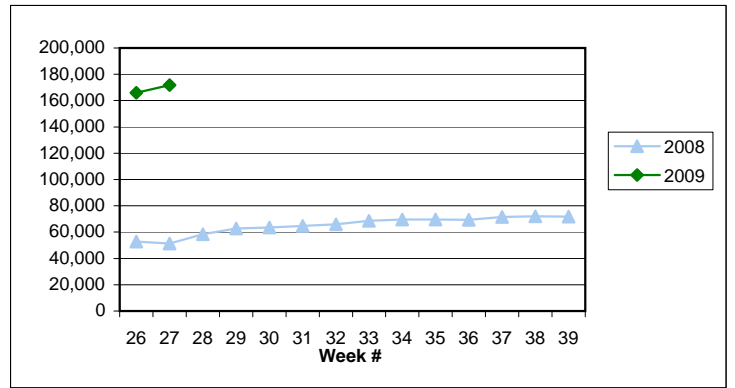
EMERGENCY UNEMPLOYMENT COMPENSATION 08			
Initial Claims (Excl. Liable)	3,035	2,521	65,597
Weeks Claimed (Excl. Liable)	47,805	46,590	1,007,605
Gross Amount of Payments (\$) ⁴	15,724,619	15,259,633	318,156,400
EUC Benefit Payments (\$)	14,562,594	14,119,808	299,567,885
EUC Federal Additional Compensation (\$) ³	1,162,025	1,139,825	18,588,515
Number Exhausting Tier 1 Benefits	1,093	1,196	31,446
Number Exhausting Tier 2 Benefits	660	724	15,897

EUC begins 07/06/2008

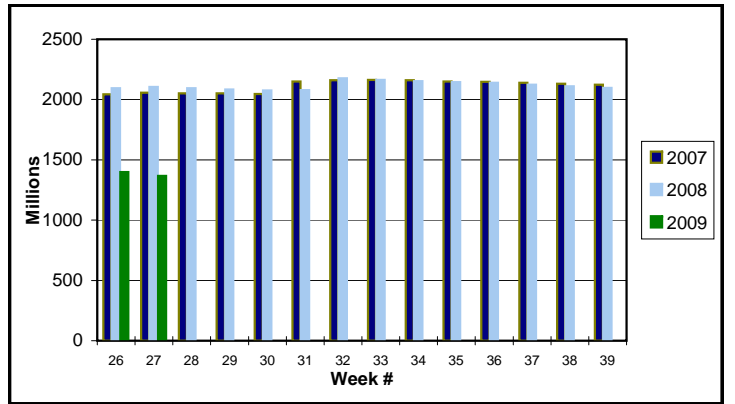
Benefits Paid By Program
Total Benefits Paid: \$54,384,061

Weeks Claimed - Program by Program
Total: 171,705

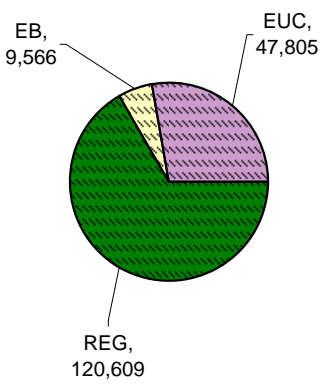
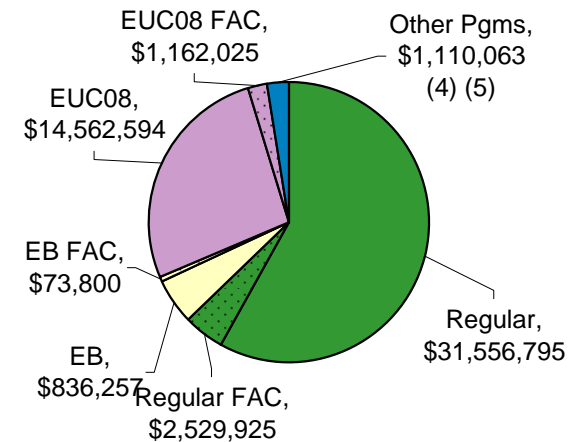
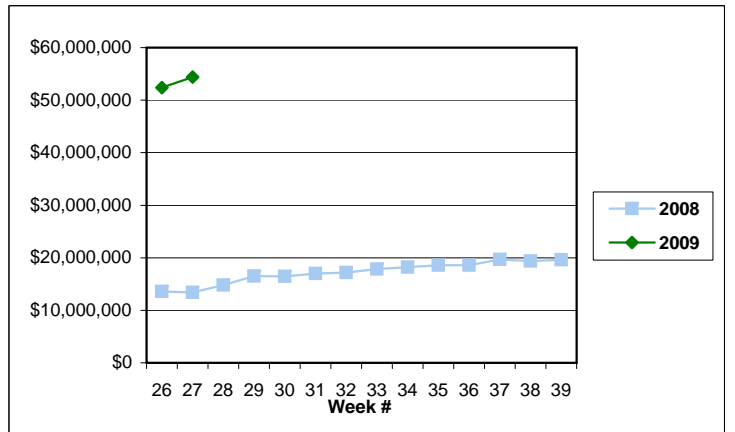
Total Weeks Claimed (Regular + EB + EUC): 171,705



Trust Fund Balance: \$ 1,367.32 (in millions)



Total Benefits Paid: \$54,384,061



³ Federal Additional Compensation program start 3/2/2009 - Adds and additional \$25 to all claims

⁴ Includes FAC Payments

⁵ Other Programs Include AB, TRA, TAA, WS, TUI, SUD, SEA

For current and historic UI reports, visit:

<http://www.oregon.gov/EMPLOY/BUDGET/UI/index.shtml>

(503) 947-1679

janet.l.orton@state.or.us