

UNEMPLOYMENT INSURANCE STATISTICS

State of Oregon
EMPLOYMENT DEPARTMENT

UI Programs
Janet Orton

(503) 947-1679

janet.l.orton@state.or.us

www.WorkingInOregon.org

					This Month	Last Month	Last Year	
LABOR FORCE DATA					June 2009	May 2009	June 2008	
Oregon Civilian Labor Force					1,995,952	1,987,520	1,964,967	
Total Number Unemployed					241,156	236,210	113,722	
UNEMPLOYMENT RATES (CIVILIAN) (%)					Labor Force & Rate Data: www.QualityInfo.org			
Total Unemployment:					Oregon	12.1	11.9	5.8
					National	9.7	9.1	5.7
Seasonally Adjusted:					Oregon	12.2	12.2	5.9
					National	9.5	9.4	5.5
Week # :	28	THIS WEEK		LAST WEEK		This Month	Last Month	Last Year
Ending:	July 18, 2009	2009	2008	2009	2008	June 2009	May 2009	June 2008
UNEMPLOYMENT RATES (%)								
Insured Unemployment: Oregon		6.68	3.41	6.80	3.00	6.83	7.16	2.91
EB Trigger		7.03	3.16	7.11	3.16			
Adjusted Insured Unemployment		9.32	3.95	9.39	3.92			
National Average TUR ¹		12.10	5.60	12.00	5.60	This Month	Last Month	Last Year
REGULAR CLAIMS (UI, UCFFE, UCX)						June 2009	May 2009	June 2008
Initial Claims (Excl. Liable) ²		10,761	8,741	11,920	8,904	48,368	56,697	34,193
Oregon - New		4,919	3,925	4,542	4,147	20,432	20,674	16,708
Additional		5,337	4,591	6,964	4,491	26,140	33,804	16,547
Interstate - Agent		505	225	414	266	1,796	2,219	938
Interstate - Liable		279	225	273	323	1,159	1,376	834
Weeks Claimed (Excl. Liable) ²		112,523	58,434	114,334	51,282	459,620	612,803	254,337
Oregon		108,003	56,234	110,013	49,543	441,830	590,297	245,765
Interstate - Agent		4,520	2,200	4,321	1,739	17,790	22,506	8,572
Interstate - Liable		3,295	1,680	3,362	1,543	13,087	17,254	7,790
New Combined Wage Claims		182	163	202	96	749	972	562
Non-monetary Determinations & Redeter.		3,051	2,428	2,694	1,944	11,585	16,087	9,742
PAYMENTS: REGULAR BENEFITS								
First Payments		5,693	3,152	4,166	2,760	16,967	21,059	12,426
Checks Issued		106,171	52,092	107,325	48,030	446,462	601,831	237,619
Gross Amount of Payments (\$) ^{2,4}		33,252,057	14,350,929	34,086,720	12,957,059	140,163,484	187,994,425	64,482,521
Regular Benefit Payments (\$)		30,765,282	14,350,929	31,556,795	12,957,059	129,734,134	173,960,900	64,482,521
Regular Federal Additional Compensation (\$) ³		2,486,775	0	2,529,925	0	10,429,350	14,033,525	0
Average Check Amount (\$) ^{2,4}		313.19	275.49	317.60	269.77	313.94	312.37	271.37
Number Exhausting Benefits		4,602	1,403	2,745	844	12,645	14,843	4,689
TRUST FUND								
Balance (in Millions) (\$)		\$ 1,479.54	\$ 2,092.81	\$ 1,367.32	\$ 2,104.27	\$ 1,423.77	\$ 1,548.04	\$ 2,095.20

¹ NTUR: Unemployment Compensation Amendment of 1992 specifies that a 2 month average NTUR be used to determine duration levels.

² Excludes WORKSHARE program

³ Federal Additional Compensation program start 3/2/2009 - Adds and additional \$25 to all claims

⁴ Includes FAC Payments

For current and historic UI reports, visit:

<http://www.oregon.gov/EMPLOY/BUDGET/UI/index.shtml>

Week # :	28
Ending:	July 18, 2009

	This Week	Last Week	Cumulative
EXTENDED BENEFITS (UI, UCFE, UCX)			YTD
Initial Claims (Excl. Liab)	667	611	12,852
Weeks Claimed (Excl. Liab)	10,090	9,566	83,500
Gross Amount of Payments (\$) ⁴	3,402,799	3,213,445	30,966,263
EB Benefit Payments (\$)	3,141,524	2,964,870	28,542,838
EB Federal Additional Compensation (\$) ³	261,275	248,575	2,423,425
Number Exhausting Benefits	34	29	412

Oregon HEB Trigger "ON" 02/15/2009.

For a list of states ON EB, visit:

http://www.workforcesecurity.doleta.gov/unemploy/claims_arch.asp

Misc Additional Benefits			
Initial Claims (Excl. Liab)	3	2	70
Weeks Claimed (Excl. Liab)	73	46	979
Gross Amount of Payments (\$)	0	0	0
Number Exhausting Benefits	0	0	0

TRADE ADJUSTMENT ACT			
Training Plans	11	17	1,134
Initial Claims	41	70	3,072
Weeks Claimed	2	1	1,074
Gross Amount of TRA Payments (\$) ⁴	918	372	411,024
TRA Benefit Payments (\$)	868	372	390,024
TRA Federal Additional Compensation (\$) ³	50	0	21,000
Certifications	0	18	18
Gross Amount of TAA Payments (\$)	2,461	1,462	46,209

WORKSHARE PROGRAM			
Initial Claims	334	287	13,176
Weeks Claimed	4,448	4,873	134,352
Gross Amount of Payments (\$) ⁴	515,200	543,388	14,656,313
WS Benefit Payments (\$)	418,850	440,988	12,324,664
WS Federal Additional Compensation (\$)	96,350	102,400	2,331,649

TRAINING UI (TUI)			
Applications Accepted	117	129	3,855
Approved	113	124	3,243
Weeks Claimed	1,957	1,925	46,710
Gross Amount of Payments (\$) ⁴	724,800	702,293	16,677,479
TUI Benefit Payments (\$)	674,850	657,293	15,750,974
TUI Federal Additional Compensation (\$)	49,950	45,000	926,505

SUD			
Initial Claims	0	0	8
Weeks Claimed	2	0	102
Gross Amount of Payments (\$) ⁴	377	377	39,814
SUD Benefit Payments (\$)	327	327	36,914
SUD Federal Additional Compensation (\$)	50	50	2,900

³ Federal Additional Compensation program start 3/2/2009 - Adds and additional \$25 to all claims

⁴ Includes FAC Payments

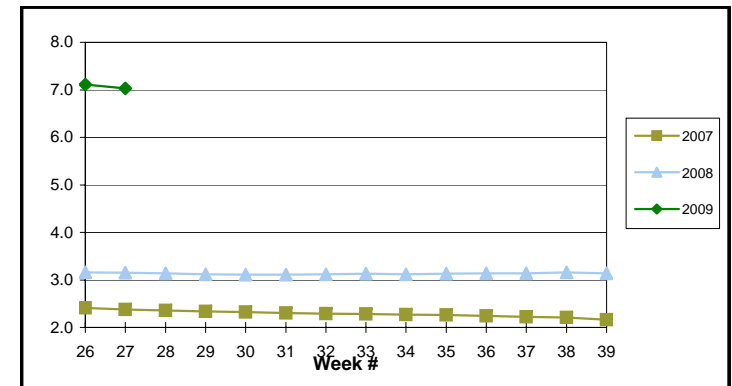
For current and historic UI reports, visit:

<http://www.oregon.gov/EMPLOY/BUDGET/UI/index.shtml>

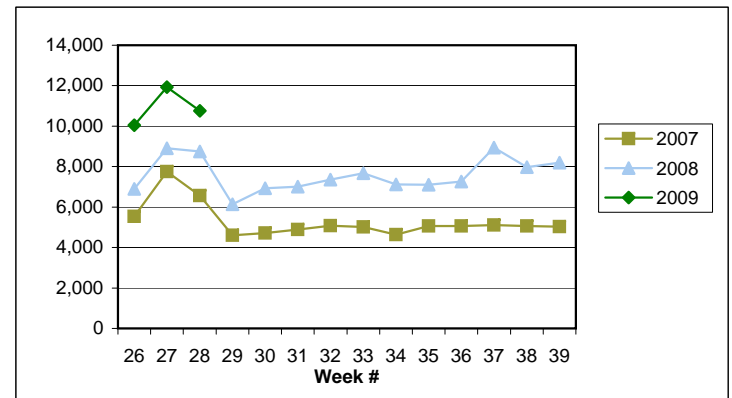
(503) 947-1679

✉ janet.l.orton@state.or.us

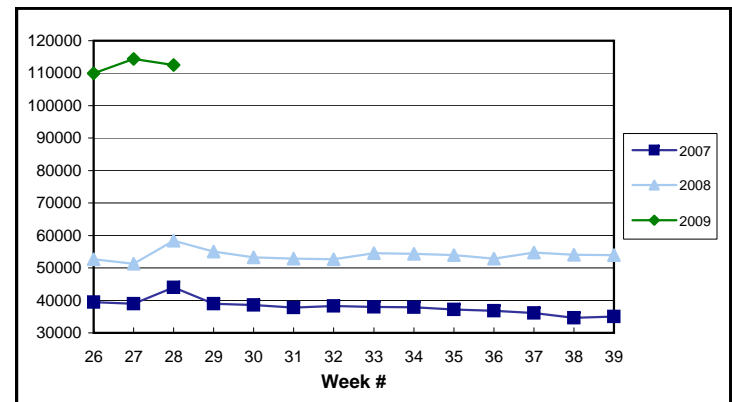
EB Trigger: 7.03



Regular Initial Claims: 10,761



Regular Weeks Claimed: 112,523



Week # : 28
Ending: July 18, 2009

This Week Last Week Cumulative
 YTD

SELF EMPLOYMENT (SEA) MONTHLY ⁵		June 2009	Cumulative
Referred		69	307
Enrolled		103	454
Completed		19	127
Weeks Claimed	249	872	4,822
Gross Amount of Payments (\$) ⁴	109,396	384,434	2,060,539
SEA Benefit Payments (\$)	103,146	362,659	1,967,964
SEA Federal Additional Compensation (\$) ³	6,250	21,775	92,575

⁵ These are MONTHLY counts; data in BOLD is weekly.

DISASTER UNEMPLOYMENT ASSISTANCE (DUA)			
Initial Claims	0	0	0
Weeks Claimed	0	0	0
Gross Amount of Payments (\$)	0	0	0
Insured	0	0	0
Self Employed	0	0	0
Number Exhausting Benefits	0	0	0

Announcement Date 12/12/2007

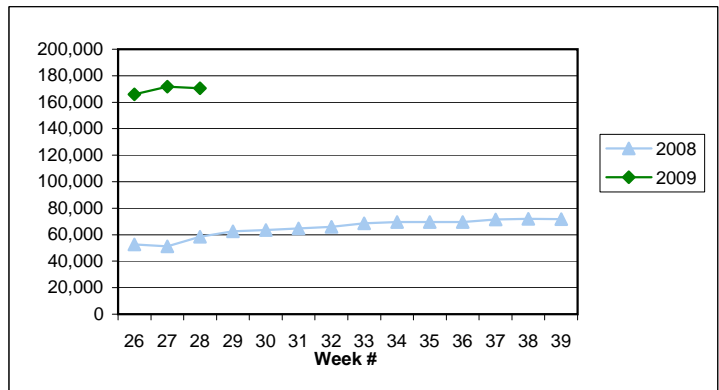
EMERGENCY UNEMPLOYMENT COMPENSATION 08			
Initial Claims (Excl. Liable)	3,672	3,035	69,269
Weeks Claimed (Excl. Liable)	47,906	47,805	1,055,511
Gross Amount of Payments (\$) ⁴	15,981,223	15,724,619	334,137,623
EUC Benefit Payments (\$)	14,797,848	14,562,594	314,365,733
EUC Federal Additional Compensation (\$) ³	1,183,375	1,162,025	19,771,890
Number Exhausting Tier 1 Benefits	1,062	1,093	32,466
Number Exhausting Tier 2 Benefits	733	660	16,556

EUC begins 07/06/2008

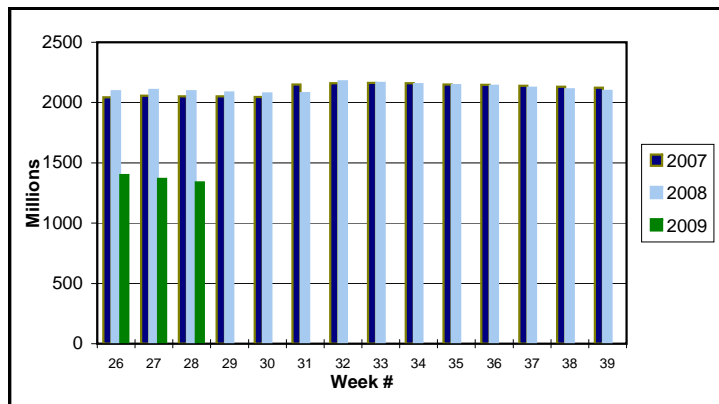
Benefits Paid By Program
Total Benefits Paid: \$53,989,231

Weeks Claimed - Program by Program
Total: 170,519

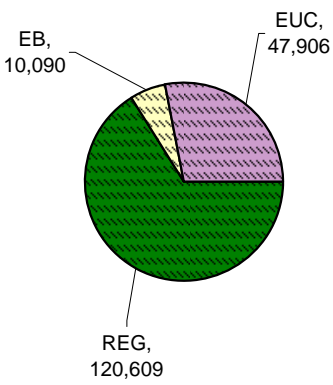
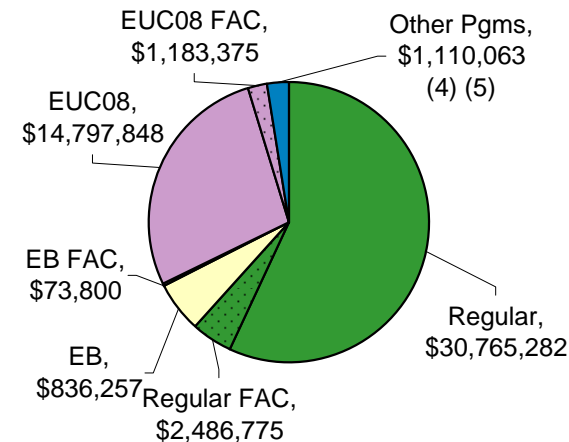
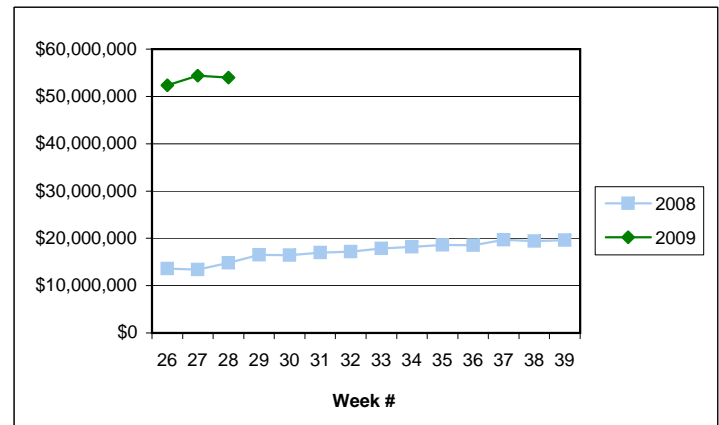
Total Weeks Claimed (Regular + EB + EUC): 170,519



Trust Fund Balance: \$ 1,338.72 (in millions)



Total Benefits Paid: \$53,989,231



³ Federal Additional Compensation program start 3/2/2009 - Adds and additional \$25 to all claims

⁴ Includes FAC Payments

⁵ Other Programs Include AB, TRA, TAA, WS, TUI, SUD, SEA

For current and historic UI reports, visit:

<http://www.oregon.gov/EMPLOY/BUDGET/UI/index.shtml>

(503) 947-1679

janet.l.orton@state.or.us