

# UNEMPLOYMENT INSURANCE STATISTICS

State of Oregon  
EMPLOYMENT DEPARTMENT

UI Programs  
Janet Orton

(503) 947-1679

janet.l.orton@state.or.us

www.WorkingInOregon.org

LABOR FORCE DATA		This Month	Last Month	Last Year
		June 2009	May 2009	June 2008
Oregon Civilian Labor Force		1,995,952	1,987,520	1,964,967
Total Number Unemployed		241,156	236,210	113,722

UNEMPLOYMENT RATES (CIVILIAN) (%)		Labor Force & Rate Data: <a href="http://www.QualityInfo.org">www.QualityInfo.org</a>		
		This Month	Last Month	Last Year
Total Unemployment:	Oregon	12.1	11.9	5.8
	National	9.7	9.1	5.7
Seasonally Adjusted:	Oregon	12.2	12.2	5.9
	National	9.5	9.4	5.5

Week # :	29					This Month	Last Month	Last Year
Ending:	July 25, 2009	THIS WEEK		LAST WEEK		June 2009	May 2009	June 2008
		2009	2008	2009	2008	June 2009	May 2009	June 2008
<b>UNEMPLOYMENT RATES (%)</b>								
Insured Unemployment: Oregon		6.45	3.21	6.68	3.41	6.83	7.16	2.91
EB Trigger		6.94	3.15	7.03	3.16			
Adjusted Insured Unemployment		9.23	3.94	9.32	3.95			
National Average TUR <sup>1</sup>		12.10	5.50	12.10	5.60			
<b>REGULAR CLAIMS (UI, UCFFE, UCX)</b>								
Initial Claims (Excl. Liable) <sup>2</sup>		10,219	6,137	10,761	8,741	48,368	56,697	34,193
Oregon - New		4,774	3,080	4,919	3,925	20,432	20,674	16,708
Additional		4,994	2,763	5,337	4,591	26,140	33,804	16,547
Interstate - Agent		451	294	505	225	1,796	2,219	938
Interstate - Liable		272	167	279	225	1,159	1,376	834
Weeks Claimed (Excl. Liable) <sup>2</sup>		108,461	55,075	112,523	58,434	459,620	612,803	254,337
Oregon		104,045	53,215	108,003	56,234	441,830	590,297	245,765
Interstate - Agent		4,416	1,860	4,520	2,200	17,790	22,506	8,572
Interstate - Liable		3,263	1,674	3,295	1,680	13,087	17,254	7,790
New Combined Wage Claims		196	107	182	163	749	972	562
Non-monetary Determinations & Redeter.		2,478	2,859	3,051	2,428	11,585	16,087	9,742
<b>PAYMENTS: REGULAR BENEFITS</b>								
First Payments		4,334	4,212	5,693	3,152	16,967	21,059	12,426
Checks Issued		102,505	51,702	106,171	52,092	446,462	601,831	237,619
Gross Amount of Payments (\$) <sup>2,4</sup>		32,092,514	14,014,029	33,252,057	14,350,929	140,163,484	187,994,425	64,482,521
Regular Benefit Payments (\$)		29,682,314	14,014,029	30,765,282	14,350,929	129,734,134	173,960,900	64,482,521
Regular Federal Additional Compensation (\$) <sup>3</sup>		2,410,200	0	2,486,775	0	10,429,350	14,033,525	0
Average Check Amount (\$) <sup>2,4</sup>		313.08	271.05	313.19	275.49	313.94	312.37	271.37
Number Exhausting Benefits		3,484	1,230	4,602	1,403	12,645	14,843	4,689
<b>TRUST FUND</b>								
Balance (in Millions) (\$)		\$ 1,406.36	\$ 2,083.36	\$ 1,338.72	\$ 2,092.81	\$ 1,423.77	\$ 1,541.93	\$ 2,095.20

<sup>1</sup> NTUR: Unemployment Compensation Amendment of 1992 specifies that a 2 month average NTUR be used to determine duration levels.

<sup>2</sup> Excludes WORKSHARE program

<sup>3</sup> Federal Additional Compensation program start 3/2/2009 - Adds and additional \$25 to all claims

<sup>4</sup> Includes FAC Payments

For current and historic UI reports, visit:

<http://www.oregon.gov/EMPLOY/BUDGET/UI/index.shtml>

<b>Week # :</b>	<b>29</b>
<b>Ending:</b>	<b>July 25, 2009</b>

	<b>This Week</b>	<b>Last Week</b>	<b>Cumulative</b>
<b>EXTENDED BENEFITS (UI, UCFE, UCX)</b>			<b>YTD</b>
Initial Claims (Excl. Liable)	647	667	13,493
Weeks Claimed (Excl. Liable)	10,436	10,090	93,936
Gross Amount of Payments (\$) <sup>4</sup>	3,500,903	3,402,799	34,467,166
EB Benefit Payments (\$)	3,232,553	3,141,524	31,775,391
EB Federal Additional Compensation (\$) <sup>3</sup>	268,350	261,275	2,691,775
Number Exhausting Benefits	48	34	455

Oregon HEB Trigger "ON" 02/15/2009.

For a list of states ON EB, visit:

[http://www.workforcesecurity.doleta.gov/unemploy/claims\\_arch.asp](http://www.workforcesecurity.doleta.gov/unemploy/claims_arch.asp)

<b>Misc Additional Benefits</b>			
Initial Claims (Excl. Liable)	2	3	72
Weeks Claimed (Excl. Liable)	52	73	1,031
Gross Amount of Payments (\$)	0	0	0
Number Exhausting Benefits	0	0	0

<b>TRADE ADJUSTMENT ACT</b>			
Training Plans	7	11	1,141
Initial Claims	92	41	3,164
Weeks Claimed	0	2	1,074
Gross Amount of TRA Payments (\$) <sup>4</sup>	0	918	411,024
TRA Benefit Payments (\$)	0	868	390,024
TRA Federal Additional Compensation (\$) <sup>3</sup>	0	50	21,000
Certifications	0	0	18
Gross Amount of TAA Payments (\$)	0	2,461	46,209

<b>WORKSHARE PROGRAM</b>			
Initial Claims	195	334	13,371
Weeks Claimed	5,376	4,448	139,728
Gross Amount of Payments (\$) <sup>4</sup>	603,487	515,200	15,259,800
WS Benefit Payments (\$)	488,462	418,850	12,813,126
WS Federal Additional Compensation (\$)	115,025	96,350	2,446,674

<b>TRAINING UI (TUI)</b>			
Applications Accepted	179	117	4,034
Approved	175	113	139,728
Weeks Claimed	2,079	1,957	48,789
Gross Amount of Payments (\$) <sup>4</sup>	778,016	724,800	17,455,495
TUI Benefit Payments (\$)	724,516	674,850	16,475,490
TUI Federal Additional Compensation (\$)	53,500	49,950	980,005

<b>SUD</b>			
Initial Claims	0	0	8
Weeks Claimed	2	2	104
Gross Amount of Payments (\$) <sup>4</sup>	377	377	40,191
SUD Benefit Payments (\$)	327	327	37,241
SUD Federal Additional Compensation (\$)	50	50	2,950

<sup>3</sup> Federal Additional Compensation program start 3/2/2009 - Adds and additional \$25 to all claims

<sup>4</sup> Includes FAC Payments

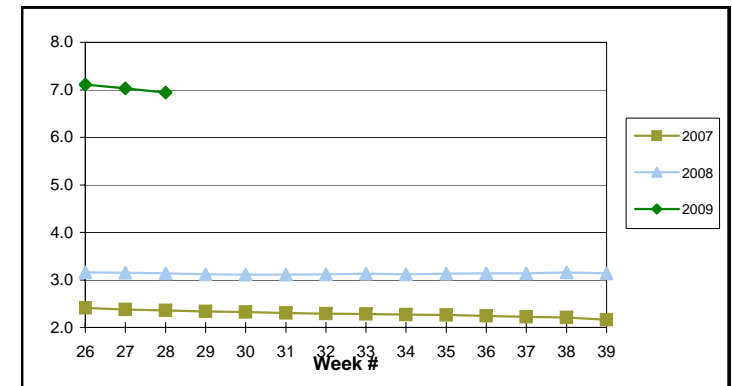
For current and historic UI reports, visit:

<http://www.oregon.gov/EMPLOY/BUDGET/UI/index.shtml>

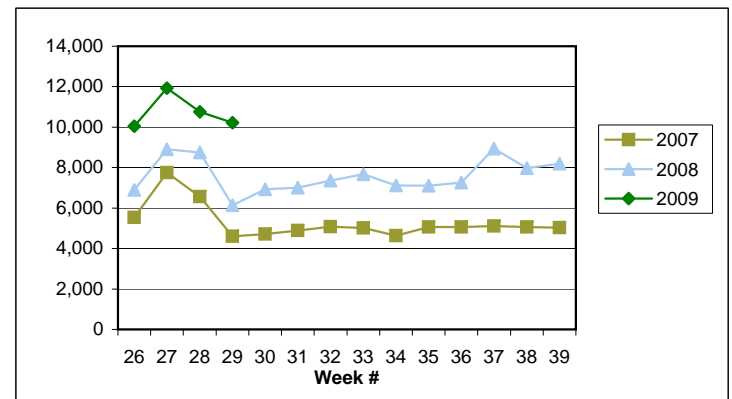
(503) 947-1679

[janet.l.orton@state.or.us](mailto:janet.l.orton@state.or.us)

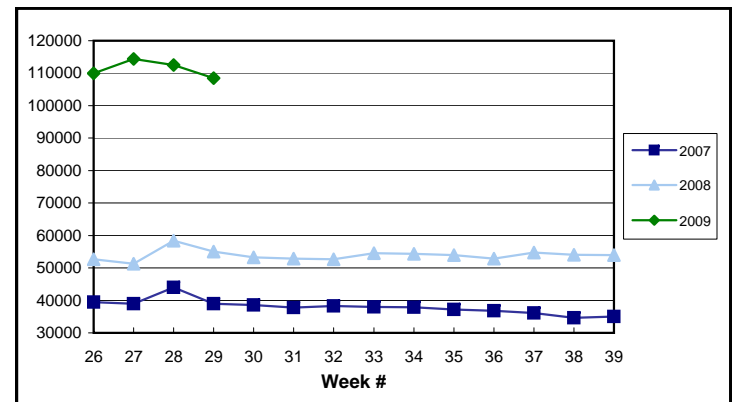
**EB Trigger: 6.94**



**Regular Initial Claims: 10,219**



**Regular Weeks Claimed: 108,461**



**Week # :** 29  
**Ending:** July 25, 2009

**This Week    Last Week    Cumulative**  
 YTD

<b>SELF EMPLOYMENT (SEA) MONTHLY <sup>5</sup></b>		<b>June 2009</b>	<b>Cumulative</b>
Referred		69	307
Enrolled		103	454
Completed		19	127
<b>Weeks Claimed</b>	<b>235</b>	<b>872</b>	<b>5,057</b>
<b>Gross Amount of Payments (\$) <sup>4</sup></b>	<b>102,327</b>	<b>384,434</b>	<b>2,162,866</b>
<b>SEA Benefit Payments (\$)</b>	<b>96,477</b>	<b>362,659</b>	<b>2,064,441</b>
<b>SEA Federal Additional Compensation (\$) <sup>3</sup></b>	<b>5,850</b>	<b>21,775</b>	<b>98,425</b>

<sup>5</sup> These are MONTHLY counts; data in **BOLD** is weekly.

<b>DISASTER UNEMPLOYMENT ASSISTANCE (DUA)</b>			
Initial Claims	0	0	0
Weeks Claimed	0	0	0
Gross Amount of Payments (\$)	0	0	0
Insured	0	0	0
Self Employed	0	0	0
Number Exhausting Benefits	0	0	0

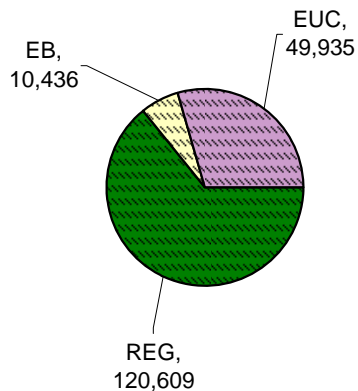
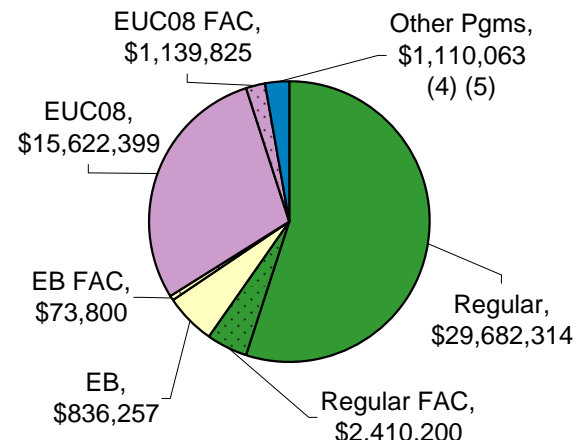
Announcement Date 12/12/2007

<b>EMERGENCY UNEMPLOYMENT COMPENSATION 08</b>			
Initial Claims (Excl. Liable)	3,863	3,672	73,132
Weeks Claimed (Excl. Liable)	49,935	47,906	1,105,446
Gross Amount of Payments (\$) <sup>4</sup>	16,762,224	15,981,223	334,137,623
EUC Benefit Payments (\$)	15,622,399	14,797,848	313,123,633
EUC Federal Additional Compensation (\$) <sup>3</sup>	1,139,825	1,183,375	21,013,990
Number Exhausting Tier 1 Benefits	1,196	1,062	33,755
Number Exhausting Tier 2 Benefits	724	733	17,277

EUC begins 07/06/2008

**Benefits Paid By Program**  
**Total Benefits Paid: \$53,839,848**

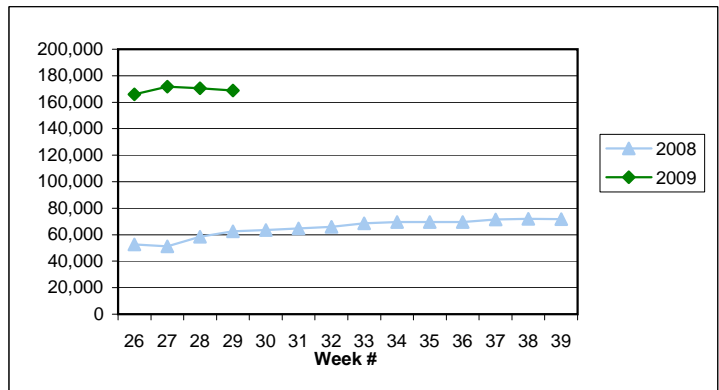
**Weeks Claimed - Program by Program**  
**Total: 168,832**



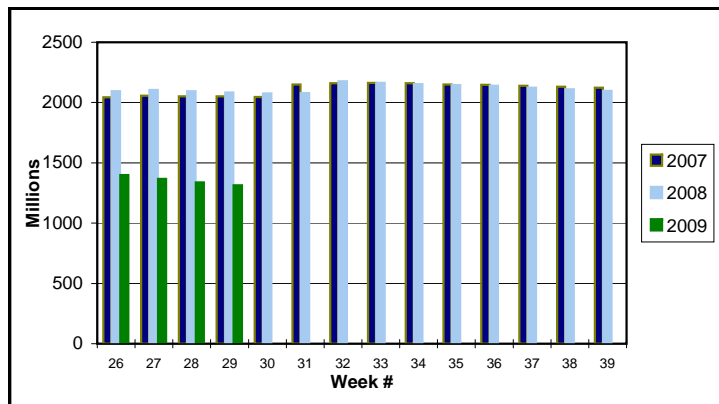
<sup>3</sup> Federal Additional Compensation program start 3/2/2009 - Adds and additional \$25 to all claims

<sup>4</sup> Includes FAC Payments

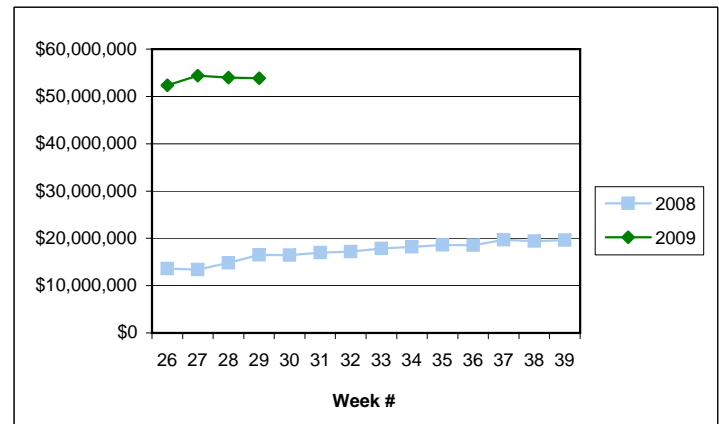
**Total Weeks Claimed (Regular + EB + EUC): 168,832**



**Trust Fund Balance: \$ 1,314.68 (in millions)**



**Total Benefits Paid: \$53,839,848**



<sup>5</sup> Other Programs Include AB, TRA, TAA, WS, TUI, SUD, SEA

For current and historic UI reports, visit:

<http://www.oregon.gov/EMPLOY/BUDGET/UI/index.shtml>

**(503) 947-1679**

[janet.l.orton@state.or.us](mailto:janet.l.orton@state.or.us)