

# UNEMPLOYMENT INSURANCE STATISTICS

State of Oregon  
EMPLOYMENT DEPARTMENT

UI Programs  
Janet Orton

(503) 947-1679

janet.l.orton@state.or.us

www.WorkingInOregon.org

LABOR FORCE DATA	This Month	Last Month	Last Year
	June 2009	May 2009	June 2008
Oregon Civilian Labor Force	1,995,952	1,987,520	1,964,967
Total Number Unemployed	241,156	236,210	113,722

UNEMPLOYMENT RATES (CIVILIAN) (%)		Labor Force & Rate Data: <a href="http://www.QualityInfo.org">www.QualityInfo.org</a>		
Total Unemployment:	Oregon	12.1	11.9	5.8
	National	9.7	9.1	5.7
Seasonally Adjusted:	Oregon	12.2	12.2	5.9
	National	9.5	9.4	5.5

Week # :	31
Ending:	August 8, 2009

	THIS WEEK		LAST WEEK		This Month	Last Month	Last Year
	2009	2008	2009	2008	July 2009	June 2009	July 2008
<b>UNEMPLOYMENT RATES (%)</b>							
Insured Unemployment: Oregon	6.19	3.08	6.27	3.09	6.55	6.83	3.53
EB Trigger	6.75	3.12	6.85	3.14			
Adjusted Insured Unemployment	9.28	3.91	9.13	3.93			
National Average TUR <sup>1</sup>	12.10	5.50	12.10	5.50			
<b>REGULAR CLAIMS (UI, UC FE, UCX)</b>					<b>July 2009</b>	<b>June 2009</b>	<b>July 2008</b>
<b>Initial Claims (Excl. Liable) <sup>2</sup></b>	<b>10,306</b>	<b>7,004</b>	<b>9,797</b>	<b>6,936</b>	<b>42,939</b>	<b>48,368</b>	<b>33,596</b>
Oregon - New	3,824	3,656	4,029	3,940	17,811	20,432	17,191
Additional	5,999	3,023	5,276	2,715	23,322	26,140	15,014
Interstate - Agent	483	325	492	281	1,806	1,796	1,391
Interstate - Liable	336	203	256	196	1,064	1,159	877
<b>Weeks Claimed (Excl. Liable) <sup>2</sup></b>	<b>104,105</b>	<b>52,860</b>	<b>105,483</b>	<b>52,974</b>	<b>445,296</b>	<b>459,620</b>	<b>226,749</b>
Oregon	99,409	50,763	100,948	50,808	427,705	441,830	217,542
Interstate - Agent	4,696	2,097	4,535	2,166	17,591	17,790	9,207
Interstate - Liable	3,229	1,650	3,192	1,603	13,149	13,087	6,766
<b>New Combined Wage Claims</b>	<b>173</b>	<b>134</b>	<b>162</b>	<b>119</b>	<b>737</b>	<b>749</b>	<b>567</b>
<b>Non-monetary Determinations &amp; Redeter.</b>	<b>3,128</b>	<b>4,645</b>	<b>3,366</b>	<b>2,721</b>	<b>9,585</b>	<b>11,585</b>	<b>11,549</b>
<b>PAYMENTS: REGULAR BENEFITS</b>							
First Payments	3,496	2,475	3,678	2,753	18,372	16,967	13,312
Checks Issued	100,008	50,124	101,892	48,909	420,203	446,462	208,518
Gross Amount of Payments (\$) <sup>2,4</sup>	31,306,082	13,603,455	31,698,553	13,273,092	132,213,791	140,163,484	56,781,277
Regular Benefit Payments (\$)	28,956,007	13,603,455	29,323,903	13,273,092	122,337,491	129,734,134	56,781,227
Regular Federal Additional Compensation (\$) <sup>3</sup>	2,350,075	0	2,374,650	0	9,876,300	10,429,350	0
Average Check Amount (\$) <sup>2,4</sup>	<b>313.04</b>	<b>271.40</b>	<b>311.10</b>	<b>271.38</b>	<b>314.64</b>	<b>313.94</b>	<b>272.31</b>
Number Exhausting Benefits	3,474	1,095	3,413	1,062	13,851	12,645	4,893
<b>TRUST FUND</b>							
Balance (in Millions) (\$)	\$ 1,470.10	\$ 2,079.32	\$ 1,385.45	\$ 2,075.42	\$ 1,385.45	\$ 1,423.77	\$ 2,074.30

<sup>1</sup> NTUR: Unemployment Compensation Amendment of 1992 specifies that a 2 month average NTUR be used to determine duration levels.

<sup>2</sup> Excludes WORKSHARE program

<sup>3</sup> Federal Additional Compensation program start 3/2/2009 - Adds and additional \$25 to all claims

<sup>4</sup> Includes FAC Payments

For current and historic UI reports, visit:

<http://www.oregon.gov/EMPLOY/BUDGET/UI/index.shtml>

<b>Week # :</b>	<b>31</b>
<b>Ending:</b>	<b>August 8, 2009</b>

	<b>This Week</b>	<b>Last Week</b>	<b>Cumulative</b>
<b>EXTENDED BENEFITS (UI, UCFE, UCX)</b>			<b>YTD</b>
Initial Claims (Excl. Liable)	651	637	14,781
Weeks Claimed (Excl. Liable)	11,046	10,858	115,840
Gross Amount of Payments (\$) <sup>4</sup>	3,762,949	3,163,100	41,861,115
EB Benefit Payments (\$)	3,474,649	2,884,700	38,602,640
EB Federal Additional Compensation (\$) <sup>3</sup>	288,300	278,400	3,258,475
Number Exhausting Benefits	62	44	567

Oregon HEB Trigger "ON" 02/15/2009.

For a list of states ON EB, visit:

[http://www.workforcesecurity.doleta.gov/unemploy/claims\\_arch.asp](http://www.workforcesecurity.doleta.gov/unemploy/claims_arch.asp)

<b>Misc Additional Benefits</b>			
Initial Claims (Excl. Liable)	4	3	79
Weeks Claimed (Excl. Liable)	50	80	1,161
Gross Amount of Payments (\$)	0	0	0
Number Exhausting Benefits	0	0	0

<b>TRADE ADJUSTMENT ACT</b>			
Training Plans	6	10	1,157
Initial Claims	74	84	3,322
Weeks Claimed	1	2	1,077
Gross Amount of TRA Payments (\$) <sup>4</sup>	459	918	412,401
TRA Benefit Payments (\$)	434	868	391,326
TRA Federal Additional Compensation (\$) <sup>3</sup>	25	50	21,075
Certifications	0	1	19
Gross Amount of TAA Payments (\$)	3,381	2,799	52,388

<b>WORKSHARE PROGRAM</b>			
Initial Claims	168	155	13,696
Weeks Claimed	4,552	4,608	148,888
Gross Amount of Payments (\$) <sup>4</sup>	549,068	572,930	16,381,798
WS Benefit Payments (\$)	445,118	465,930	13,724,174
WS Federal Additional Compensation (\$)	103,950	107,000	2,657,624

<b>TRAINING UI (TUI)</b>			
Applications Accepted	161	76	4,271
Approved	155	73	3,646
Weeks Claimed	2,189	2,158	53,136
Gross Amount of Payments (\$) <sup>4</sup>	384,151	794,901	18,634,547
TUI Benefit Payments (\$)	327,676	740,376	17,543,542
TUI Federal Additional Compensation (\$)	56,475	54,525	1,091,005

<b>SUD</b>			
Initial Claims	0	0	8
Weeks Claimed	2	2	108
Gross Amount of Payments (\$) <sup>4</sup>	337	377	40,905
SUD Benefit Payments (\$)	287	327	37,855
SUD Federal Additional Compensation (\$)	50	50	3,050

<sup>3</sup> Federal Additional Compensation program start 3/2/2009 - Adds and additional \$25 to all claims

<sup>4</sup> Includes FAC Payments

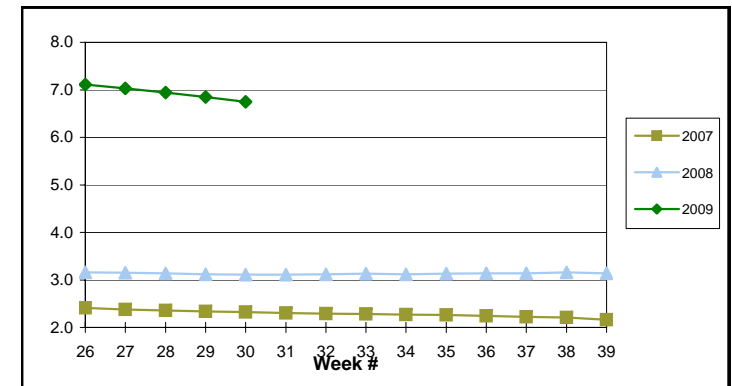
For current and historic UI reports, visit:

<http://www.oregon.gov/EMPLOY/BUDGET/UI/index.shtml>

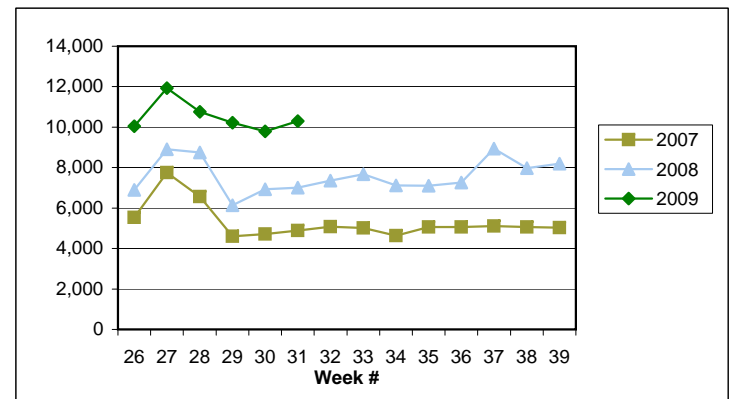
(503) 947-1679

✉ [janet.l.orton@state.or.us](mailto:janet.l.orton@state.or.us)

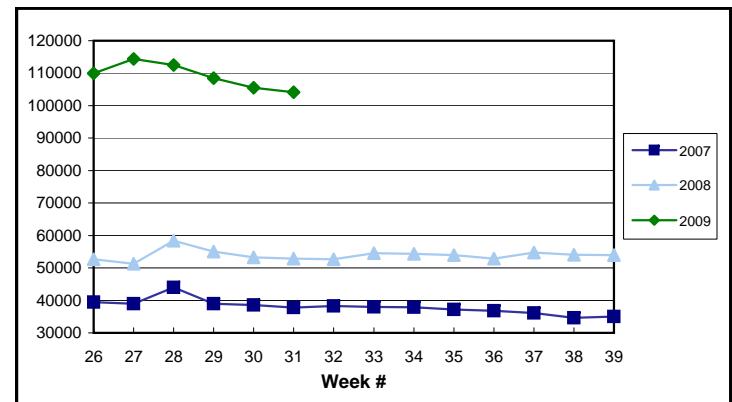
**EB Trigger: 6.75**



**Regular Initial Claims: 10,306**



**Regular Weeks Claimed: 104,105**



**Week # :** 31  
**Ending:** August 8, 2009

**This Week**    **Last Week**    **Cumulative**  
 YTD

<b>SELF EMPLOYMENT (SEA) MONTHLY<sup>5</sup></b>		<b>July 2009</b>	<b>Cumulative</b>
Referred		69	384
Enrolled		103	543
Completed		19	150
<b>Weeks Claimed</b>		<b>872</b>	<b>5,537</b>
<b>Gross Amount of Payments (\$) <sup>4</sup></b>		<b>384,434</b>	<b>2,369,190</b>
<b>SEA Benefit Payments (\$)</b>	<b>0</b>	<b>362,659</b>	<b>2,259,115</b>
<b>SEA Federal Additional Compensation (\$) <sup>3</sup></b>		<b>21,775</b>	<b>110,075</b>

<sup>5</sup> These are MONTHLY counts; data in BOLD is weekly.

<b>DISASTER UNEMPLOYMENT ASSISTANCE (DUA)</b>			
Initial Claims	0	0	0
Weeks Claimed	0	0	0
Gross Amount of Payments (\$)	0	0	0
Insured	0	0	0
Self Employed	0	0	0
Number Exhausting Benefits	0	0	0

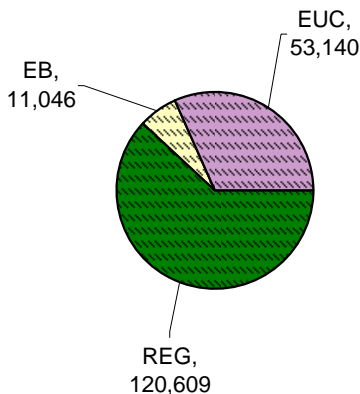
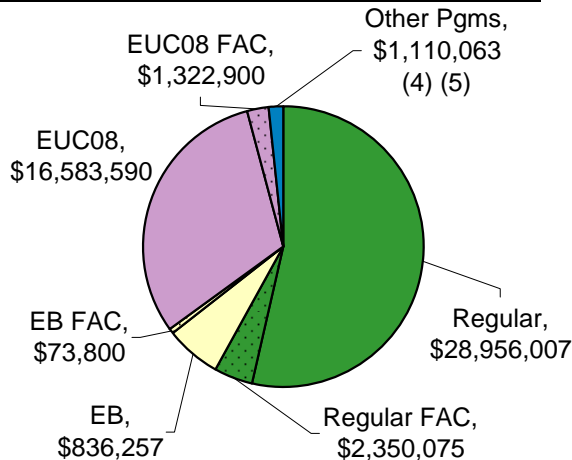
Announcement Date 12/12/2007

<b>EMERGENCY UNEMPLOYMENT COMPENSATION 08</b>			
Initial Claims (Excl. Liable)	3,822	3,520	80,474
Weeks Claimed (Excl. Liable)	53,140	51,819	1,210,405
Gross Amount of Payments (\$) <sup>4</sup>	17,906,490	17,373,071	386,179,408
EUC Benefit Payments (\$)	16,583,590	16,087,118	362,556,565
EUC Federal Additional Compensation (\$) <sup>3</sup>	1,322,900	1,285,953	23,622,843
Number Exhausting Tier 1 Benefits	1,153	1,299	36,094
Number Exhausting Tier 2 Benefits	633	731	18,555

EUC begins 07/06/2008

**Benefits Paid By Program**  
**Total Benefits Paid: \$53,912,917**

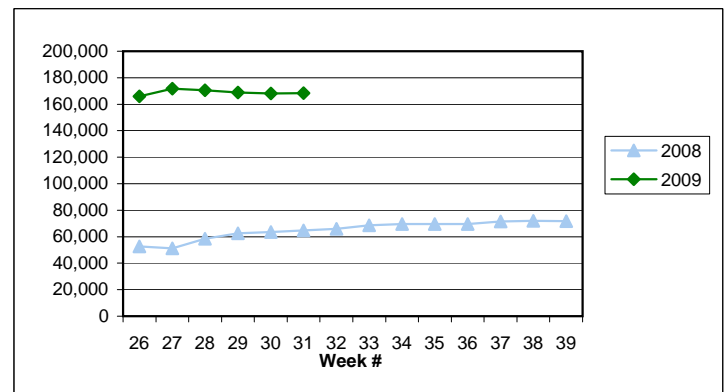
**Weeks Claimed - Program by Program**  
**Total: 168,291**



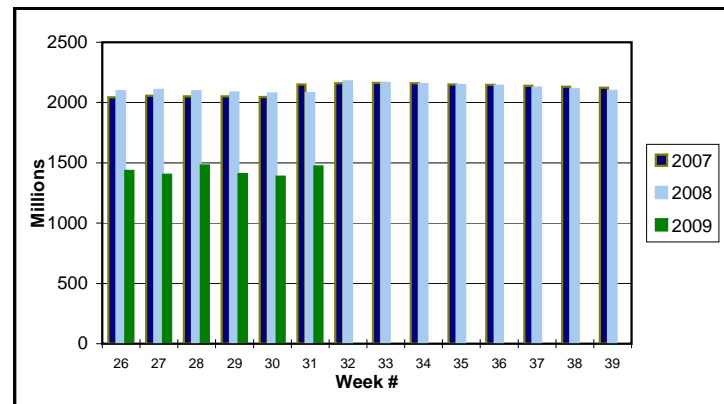
<sup>3</sup> Federal Additional Compensation program start 3/2/2009 - Adds and additional \$25 to all claims

<sup>4</sup> Includes FAC Payments

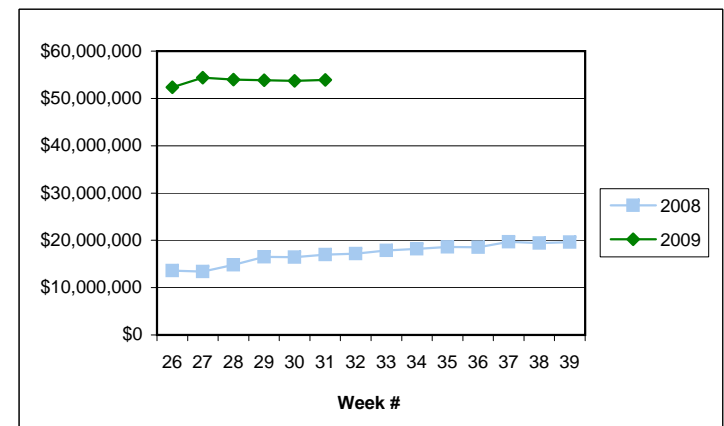
**Total Weeks Claimed (Regular + EB + EUC): 168,291**



**Trust Fund Balance: \$ 1,470.10 (in millions)**



**Total Benefits Paid: \$53,912,917**



<sup>5</sup> Other Programs Include AB, TRA, TAA, WS, TUI, SUD, SEA

For current and historic UI reports, visit:

<http://www.oregon.gov/EMPLOY/BUDGET/UI/index.shtml>

**(503) 947-1679**

[janet.l.orton@state.or.us](mailto:janet.l.orton@state.or.us)