

# UNEMPLOYMENT INSURANCE STATISTICS

State of Oregon  
EMPLOYMENT DEPARTMENT

UI Programs  
Janet Orton

(503) 947-1679

janet.l.orton@state.or.us

www.WorkingInOregon.org

LABOR FORCE DATA		This Month	Last Month	Last Year
		July 2009	June 2009	July 2008
Oregon Civilian Labor Force		1,996,544	1,992,338	1,978,927
Total Number Unemployed		232,782	236,323	120,582

UNEMPLOYMENT RATES (CIVILIAN) (%)		Labor Force & Rate Data: <a href="http://www.QualityInfo.org">www.QualityInfo.org</a>		
		This Month	Last Month	Last Year
Total Unemployment:	Oregon	11.7	11.9	6.1
	National	9.7	9.7	6.0
Seasonally Adjusted:	Oregon	11.9	12.0	6.3
	National	9.4	9.5	5.7

Week # :	32					This Month	Last Month	Last Year
Ending:	August 15, 2009	THIS WEEK		LAST WEEK		July 2009	June 2009	July 2008
		2009	2008	2009	2008	July 2009	June 2009	July 2008
<b>UNEMPLOYMENT RATES (%)</b>								
Insured Unemployment: Oregon		6.09	3.07	6.19	3.08	6.55	6.83	3.53
EB Trigger		6.65	3.11	6.75	3.12			
Adjusted Insured Unemployment		9.18	3.90	9.28	3.91			
National Average TUR <sup>1</sup>		12.10	5.50	12.10	5.50			
<b>REGULAR CLAIMS (UI, UC FE, UCX)</b>						July 2009	June 2009	July 2008
<b>Initial Claims (Excl. Liable) <sup>2</sup></b>		<b>10,262</b>	<b>7,351</b>	<b>10,306</b>	<b>7,004</b>	<b>42,939</b>	<b>48,368</b>	<b>33,596</b>
Oregon - New		4,198	3,225	3,824	3,656	17,811	20,432	17,191
Additional		5,597	3,705	5,999	3,023	23,322	26,140	15,014
Interstate - Agent		467	421	483	325	1,806	1,796	1,391
Interstate - Liable		294	184	336	203	1,064	1,159	877
<b>Weeks Claimed (Excl. Liable) <sup>2</sup></b>		<b>102,321</b>	<b>52,677</b>	<b>104,105</b>	<b>52,860</b>	<b>445,296</b>	<b>459,620</b>	<b>226,749</b>
Oregon		97,905	50,402	99,409	50,763	427,705	441,830	217,542
Interstate - Agent		4,416	2,275	4,696	2,097	17,591	17,790	9,207
Interstate - Liable		3,265	1,643	3,229	1,650	13,149	13,087	6,766
<b>New Combined Wage Claims</b>		<b>173</b>	<b>117</b>	<b>173</b>	<b>134</b>	<b>737</b>	<b>749</b>	<b>567</b>
<b>Non-monetary Determinations &amp; Redeter.</b>		<b>3,808</b>	<b>2,142</b>	<b>3,128</b>	<b>4,645</b>	<b>9,585</b>	<b>11,585</b>	<b>11,549</b>
<b>PAYMENTS: REGULAR BENEFITS</b>								
First Payments		3,842	2,426	3,496	2,475	18,372	16,967	13,312
Checks Issued		98,783	48,069	100,008	50,124	420,203	446,462	208,518
Gross Amount of Payments (\$) <sup>2,4</sup>		31,064,115	13,127,934	31,306,082	13,603,455	132,213,791	140,163,484	56,781,277
Regular Benefit Payments (\$)		28,735,915	13,127,934	28,956,007	13,603,455	122,337,491	129,734,134	56,781,227
Regular Federal Additional Compensation (\$) <sup>3</sup>		2,328,200	0	2,350,075	0	9,876,300	10,429,350	0
Average Check Amount (\$) <sup>2,4</sup>		<b>314.47</b>	<b>273.11</b>	<b>313.04</b>	<b>271.40</b>	<b>314.64</b>	<b>313.94</b>	<b>272.31</b>
Number Exhausting Benefits		3,635	1,136	3,474	1,095	13,851	12,645	4,893
<b>TRUST FUND</b>								
Balance (in Millions) (\$)		\$ 1,445.13	\$ 2,175.26	\$ 1,470.10	\$ 2,079.32	\$ 1,385.45	\$ 1,423.77	\$ 2,074.30

<sup>1</sup> NTUR: Unemployment Compensation Amendment of 1992 specifies that a 2 month average NTUR be used to determine duration levels.

<sup>2</sup> Excludes WORKSHARE program

<sup>3</sup> Federal Additional Compensation program start 3/2/2009 - Adds and additional \$25 to all claims

<sup>4</sup> Includes FAC Payments

For current and historic UI reports, visit:

<http://www.oregon.gov/EMPLOY/BUDGET/UI/index.shtml>

<b>Week # :</b>	<b>32</b>
<b>Ending:</b>	<b>August 15, 2009</b>

	<b>This Week</b>	<b>Last Week</b>	<b>Cumulative</b>
<b>EXTENDED BENEFITS (UI, UCFE, UCX)</b>			<b>YTD</b>
Initial Claims (Excl. Liable)	591	651	15,372
Weeks Claimed (Excl. Liable)	11,638	11,046	127,478
Gross Amount of Payments (\$) <sup>4</sup>	3,878,410	3,762,949	45,739,525
EB Benefit Payments (\$)	3,582,435	3,474,649	42,185,075
EB Federal Additional Compensation (\$) <sup>3</sup>	295,975	288,300	3,554,450
Number Exhausting Benefits	55	62	647

Oregon HEB Trigger "ON" 02/15/2009.

For a list of states ON EB, visit:

[http://www.workforcesecurity.doleta.gov/unemploy/claims\\_arch.asp](http://www.workforcesecurity.doleta.gov/unemploy/claims_arch.asp)

<b>Misc Additional Benefits</b>			
Initial Claims (Excl. Liable)	3	4	82
Weeks Claimed (Excl. Liable)	67	50	1,228
Gross Amount of Payments (\$)	0	0	0
Number Exhausting Benefits	0	0	0

<b>TRADE ADJUSTMENT ACT</b>			
Training Plans	21	6	1,178
Initial Claims	58	74	3,380
Weeks Claimed	1	1	1,078
Gross Amount of TRA Payments (\$) <sup>4</sup>	459	459	412,860
TRA Benefit Payments (\$)	434	434	391,760
TRA Federal Additional Compensation (\$) <sup>3</sup>	25	25	21,100
Certifications	0	0	19
Gross Amount of TAA Payments (\$)	2,839	3,381	55,227

<b>WORKSHARE PROGRAM</b>			
Initial Claims	207	168	13,909
Weeks Claimed	4,635	4,552	153,523
Gross Amount of Payments (\$) <sup>4</sup>	570,438	549,068	16,952,236
WS Benefit Payments (\$)	464,088	445,118	14,188,262
WS Federal Additional Compensation (\$)	106,350	103,950	2,763,974

<b>TRAINING UI (TUI)</b>			
Applications Accepted	97	161	4,368
Approved	95	155	3,741
Weeks Claimed	2,264	2,189	55,400
Gross Amount of Payments (\$) <sup>4</sup>	829,787	384,151	19,464,334
TUI Benefit Payments (\$)	772,662	327,676	18,316,204
TUI Federal Additional Compensation (\$)	57,125	56,475	1,148,130

<b>SUD</b>			
Initial Claims	0	0	8
Weeks Claimed	2	2	110
Gross Amount of Payments (\$) <sup>4</sup>	323	337	41,228
SUD Benefit Payments (\$)	273	287	38,128
SUD Federal Additional Compensation (\$)	50	50	3,100

<sup>3</sup> Federal Additional Compensation program start 3/2/2009 - Adds and additional \$25 to all claims

<sup>4</sup> Includes FAC Payments

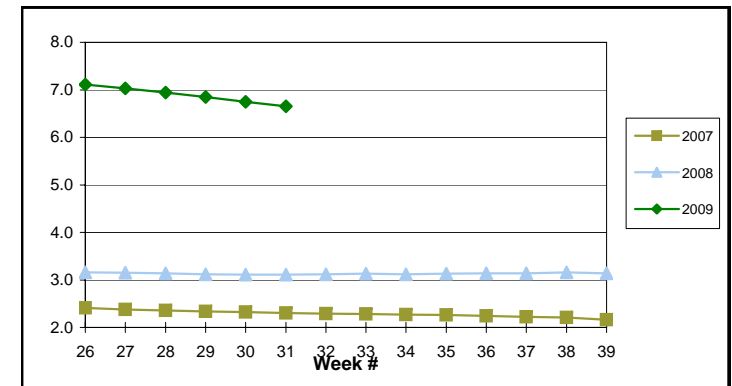
For current and historic UI reports, visit:

<http://www.oregon.gov/EMPLOY/BUDGET/UI/index.shtml>

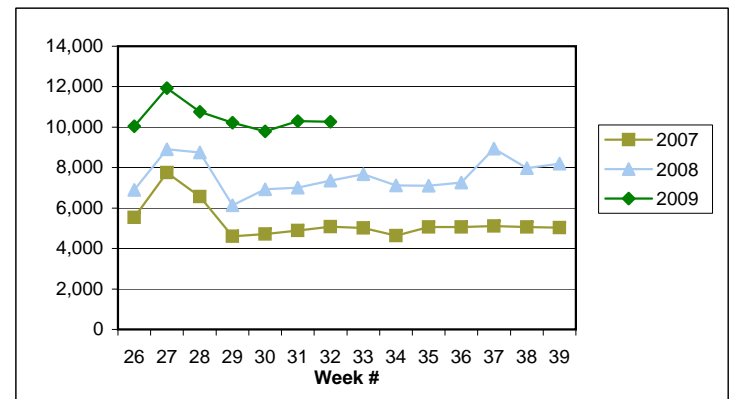
(503) 947-1679

✉ [janet.l.orton@state.or.us](mailto:janet.l.orton@state.or.us)

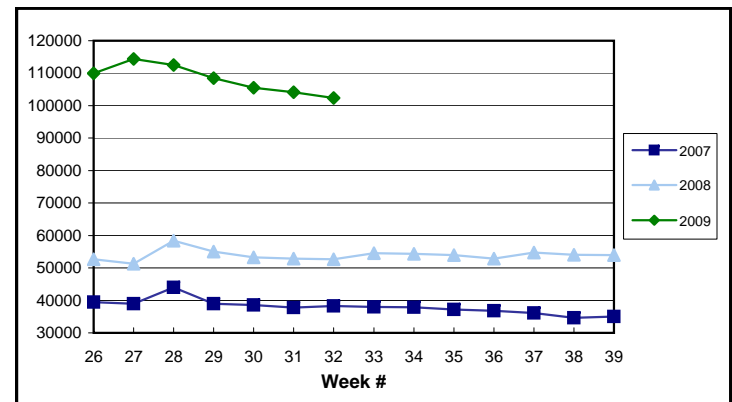
**EB Trigger: 6.65**



**Regular Initial Claims: 10,262**



**Regular Weeks Claimed: 102,321**



**Week # :** 32  
**Ending:** August 15, 2009

**This Week**    **Last Week**    **Cumulative**  
 YTD

<b>SELF EMPLOYMENT (SEA) MONTHLY<sup>5</sup></b>		<b>July 2009</b>	<b>Cumulative</b>
Referred		69	384
Enrolled		103	543
Completed		19	150
<b>Weeks Claimed</b>	<b>247</b>	<b>872</b>	<b>5,784</b>
<b>Gross Amount of Payments (\$) <sup>4</sup></b>	<b>109,848</b>	<b>384,434</b>	<b>2,479,038</b>
<b>SEA Benefit Payments (\$)</b>	<b>103,598</b>	<b>362,659</b>	<b>2,362,713</b>
<b>SEA Federal Additional Compensation (\$) <sup>3</sup></b>	<b>6,250</b>	<b>21,775</b>	<b>116,325</b>

<sup>5</sup> These are MONTHLY counts; data in BOLD is weekly.

<b>DISASTER UNEMPLOYMENT ASSISTANCE (DUA)</b>			
Initial Claims	0	0	0
Weeks Claimed	0	0	0
Gross Amount of Payments (\$)	0	0	0
Insured	0	0	0
Self Employed	0	0	0
Number Exhausting Benefits	0	0	0

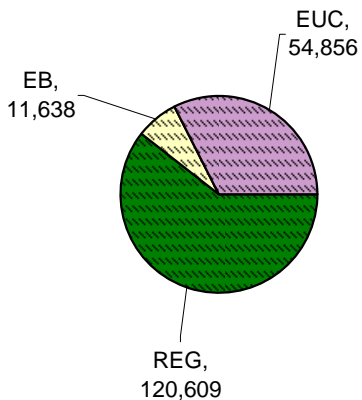
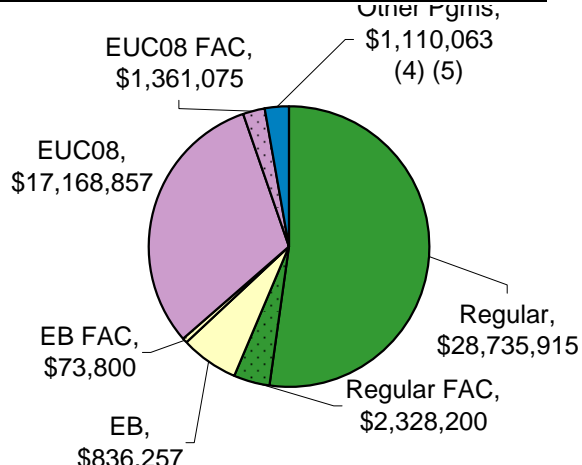
Announcement Date 12/12/2007

<b>EMERGENCY UNEMPLOYMENT COMPENSATION 08</b>			
Initial Claims (Excl. Liable)	3,874	3,822	84,348
Weeks Claimed (Excl. Liable)	54,856	53,140	1,265,261
Gross Amount of Payments (\$) <sup>4</sup>	18,529,932	17,906,490	404,709,340
EUC Benefit Payments (\$)	17,168,857	16,583,590	379,725,422
EUC Federal Additional Compensation (\$) <sup>3</sup>	1,361,075	1,322,900	24,983,918
Number Exhausting Tier 1 Benefits	1,181	1,153	37,303
Number Exhausting Tier 2 Benefits	633	633	19,169

EUC begins 07/06/2008

**Benefits Paid By Program**  
**Total Benefits Paid: \$54,986,151**

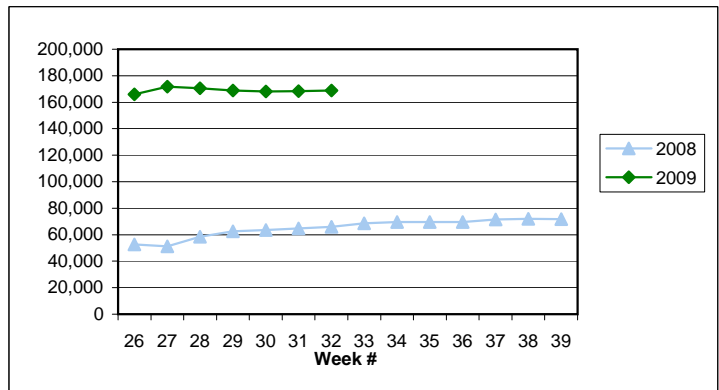
**Weeks Claimed - Program by Program**  
**Total: 168,815**



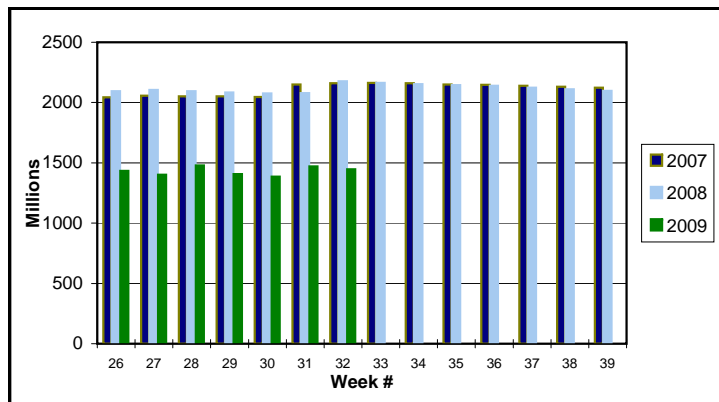
<sup>3</sup> Federal Additional Compensation program start 3/2/2009 - Adds and additional \$25 to all claims

<sup>4</sup> Includes FAC Payments

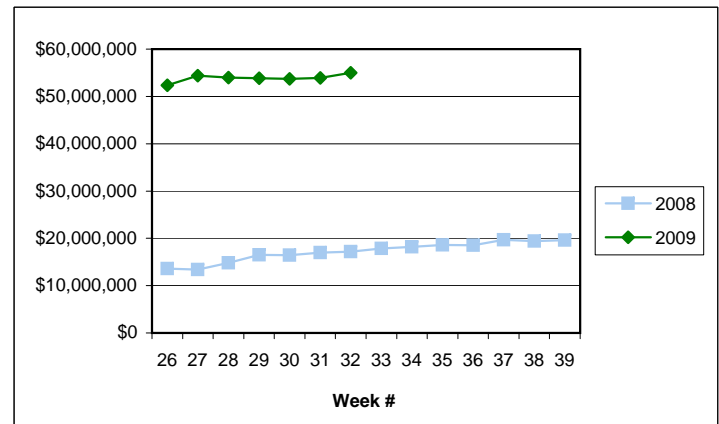
**Total Weeks Claimed (Regular + EB + EUC): 168,815**



**Trust Fund Balance: \$ 1,445.13 (in millions)**



**Total Benefits Paid: \$54,986,151**



<sup>5</sup> Other Programs Include AB, TRA, TAA, WS, TUI, SUD, SEA

For current and historic UI reports, visit:

<http://www.oregon.gov/EMPLOY/BUDGET/UI/index.shtml>

**(503) 947-1679**

[janet.l.orton@state.or.us](mailto:janet.l.orton@state.or.us)