

# UNEMPLOYMENT INSURANCE STATISTICS

State of Oregon  
EMPLOYMENT DEPARTMENT

UI Programs  
Janet Orton

(503) 947-1679

janet.l.orton@state.or.us

www.WorkingInOregon.org

LABOR FORCE DATA		This Month	Last Month	Last Year
		July 2009	June 2009	July 2008
Oregon Civilian Labor Force		1,996,544	1,992,338	1,978,927
Total Number Unemployed		232,782	236,323	120,582

UNEMPLOYMENT RATES (CIVILIAN) (%)		Labor Force & Rate Data: <a href="http://www.QualityInfo.org">www.QualityInfo.org</a>		
		This Month	Last Month	Last Year
Total Unemployment:	Oregon	11.7	11.9	6.1
	National	9.7	9.7	6.0
Seasonally Adjusted:	Oregon	11.9	12.0	6.3
	National	9.4	9.5	5.7

Week # :	33
Ending:	August 15, 2009

	THIS WEEK		LAST WEEK		This Month	Last Month	Last Year
	2009	2008	2009	2008	July 2009	June 2009	July 2008
<b>UNEMPLOYMENT RATES (%)</b>							
Insured Unemployment: Oregon	5.97	3.18	6.09	3.07	6.55	6.83	3.53
EB Trigger	6.56	3.11	6.65	3.11			
Adjusted Insured Unemployment	9.09	3.94	9.18	3.90			
National Average TUR <sup>1</sup>	12.00	5.70	12.10	5.50			
<b>REGULAR CLAIMS (UI, UC FE, UCX)</b>					<b>July 2009</b>	<b>June 2009</b>	<b>July 2008</b>
<b>Initial Claims (Excl. Liable) <sup>2</sup></b>	<b>10,290</b>	<b>7,675</b>	<b>10,262</b>	<b>7,351</b>	<b>42,939</b>	<b>48,368</b>	<b>33,596</b>
Oregon - New	4,230	3,561	4,198	3,225	17,811	20,432	17,191
Additional	5,588	3,733	5,597	3,705	23,322	26,140	15,014
Interstate - Agent	472	381	467	421	1,806	1,796	1,391
Interstate - Liable	263	188	294	184	1,064	1,159	877
<b>Weeks Claimed (Excl. Liable) <sup>2</sup></b>	<b>100,358</b>	<b>54,552</b>	<b>102,321</b>	<b>52,677</b>	<b>445,296</b>	<b>459,620</b>	<b>226,749</b>
Oregon	95,847	52,325	97,905	50,402	427,705	441,830	217,542
Interstate - Agent	4,511	2,227	4,416	2,275	17,591	17,790	9,207
Interstate - Liable	3,163	1,648	3,265	1,643	13,149	13,087	6,766
<b>New Combined Wage Claims</b>	<b>184</b>	<b>135</b>	<b>173</b>	<b>117</b>	<b>737</b>	<b>749</b>	<b>567</b>
<b>Non-monetary Determinations &amp; Redeter.</b>	<b>3,424</b>	<b>2,480</b>	<b>3,808</b>	<b>2,142</b>	<b>9,585</b>	<b>11,585</b>	<b>11,549</b>
<b>PAYMENTS: REGULAR BENEFITS</b>							
First Payments	4,020	2,578	3,842	2,426	18,372	16,967	13,312
Checks Issued	96,419	49,766	98,783	48,069	420,203	446,462	208,518
Gross Amount of Payments (\$) <sup>2,4</sup>	30,188,044	13,538,835	31,064,115	13,127,934	132,213,791	140,163,484	56,781,277
Regular Benefit Payments (\$)	27,910,344	13,538,835	28,735,915	13,127,934	122,337,491	129,734,134	56,781,227
Regular Federal Additional Compensation (\$) <sup>3</sup>	2,277,700	0	2,328,200	0	9,876,300	10,429,350	0
Average Check Amount (\$) <sup>2,4</sup>	<b>313.09</b>	<b>272.05</b>	<b>314.47</b>	<b>273.11</b>	<b>314.64</b>	<b>313.94</b>	<b>272.31</b>
Number Exhausting Benefits	3,237	1,172	3,635	1,136	13,851	12,645	4,893
<b>TRUST FUND</b>							
Balance (in Millions) (\$)	\$ 1,420.25	\$ 2,161.85	\$ 1,445.13	\$ 2,175.26	\$ 1,385.45	\$ 1,423.77	\$ 2,074.30

<sup>1</sup> NTUR: Unemployment Compensation Amendment of 1992 specifies that a 2 month average NTUR be used to determine duration levels.

<sup>2</sup> Excludes WORKSHARE program

<sup>3</sup> Federal Additional Compensation program start 3/2/2009 - Adds and additional \$25 to all claims

<sup>4</sup> Includes FAC Payments

For current and historic UI reports, visit:

<http://www.oregon.gov/EMPLOY/BUDGET/UI/index.shtml>

<b>Week # :</b>	<b>33</b>
<b>Ending:</b>	<b>August 15, 2009</b>

	<b>This Week</b>	<b>Last Week</b>	<b>Cumulative</b>
<b>EXTENDED BENEFITS (UI, UCFE, UCX)</b>			<b>YTD</b>
Initial Claims (Excl. Liable)	548	591	15,920
Weeks Claimed (Excl. Liable)	11,889	11,638	139,367
Gross Amount of Payments (\$) <sup>4</sup>	4,000,087	3,878,410	49,739,612
EB Benefit Payments (\$)	3,695,712	3,582,435	45,880,787
EB Federal Additional Compensation (\$) <sup>3</sup>	304,375	295,975	3,858,825
Number Exhausting Benefits	82	55	714

Oregon HEB Trigger "ON" 02/15/2009.

For a list of states ON EB, visit:

[http://www.workforcesecurity.doleta.gov/unemploy/claims\\_arch.asp](http://www.workforcesecurity.doleta.gov/unemploy/claims_arch.asp)

<b>Misc Additional Benefits</b>			
Initial Claims (Excl. Liable)	4	3	86
Weeks Claimed (Excl. Liable)	50	67	1,278
Gross Amount of Payments (\$)	0	0	0
Number Exhausting Benefits	0	0	0

<b>TRADE ADJUSTMENT ACT</b>			
Training Plans	35	21	1,213
Initial Claims	42	58	3,422
Weeks Claimed	1	1	1,079
Gross Amount of TRA Payments (\$) <sup>4</sup>	459	459	413,319
TRA Benefit Payments (\$)	434	434	392,194
TRA Federal Additional Compensation (\$) <sup>3</sup>	25	25	21,125
Certifications	1	0	20
Gross Amount of TAA Payments (\$)	3,450	2,839	59,023

<b>WORKSHARE PROGRAM</b>			
Initial Claims	106	207	14,009
Weeks Claimed	4,266	4,635	157,789
Gross Amount of Payments (\$) <sup>4</sup>	531,691	570,438	17,483,927
WS Benefit Payments (\$)	433,116	464,088	14,621,378
WS Federal Additional Compensation (\$)	98,575	106,350	2,862,549

<b>TRAINING UI (TUI)</b>			
Applications Accepted	0	97	4,368
Approved	0	95	3,741
Weeks Claimed	2,311	2,264	57,711
Gross Amount of Payments (\$) <sup>4</sup>	842,386	829,787	20,306,720
TUI Benefit Payments (\$)	784,036	772,662	19,100,240
TUI Federal Additional Compensation (\$)	58,350	57,125	1,206,480

<b>SUD</b>			
Initial Claims	1	0	9
Weeks Claimed	2	2	112
Gross Amount of Payments (\$) <sup>4</sup>	461	323	41,689
SUD Benefit Payments (\$)	386	273	38,514
SUD Federal Additional Compensation (\$)	75	50	3,175

<sup>3</sup> Federal Additional Compensation program start 3/2/2009 - Adds and additional \$25 to all claims

<sup>4</sup> Includes FAC Payments

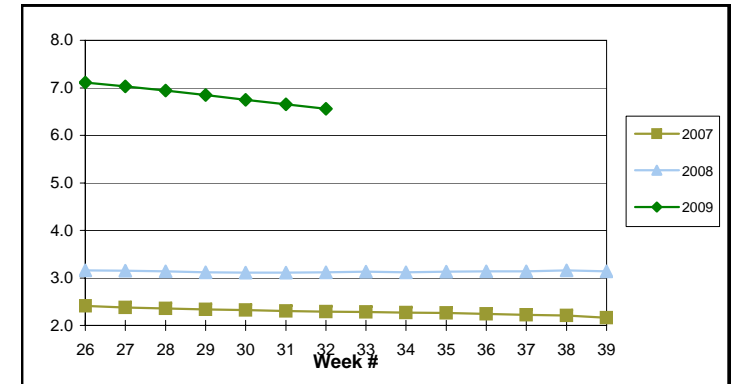
For current and historic UI reports, visit:

<http://www.oregon.gov/EMPLOY/BUDGET/UI/index.shtml>

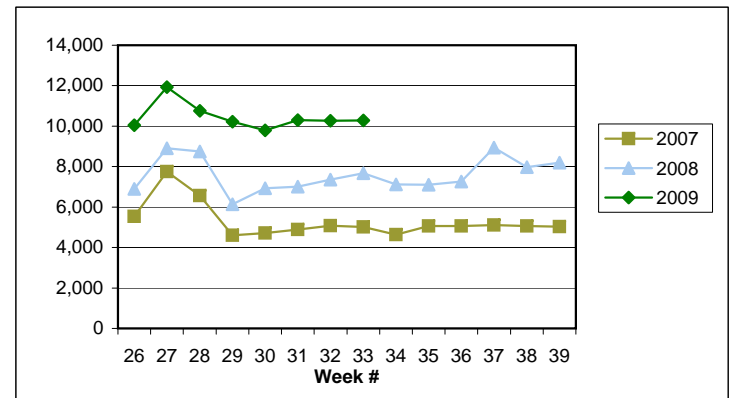
(503) 947-1679

✉ [janet.l.orton@state.or.us](mailto:janet.l.orton@state.or.us)

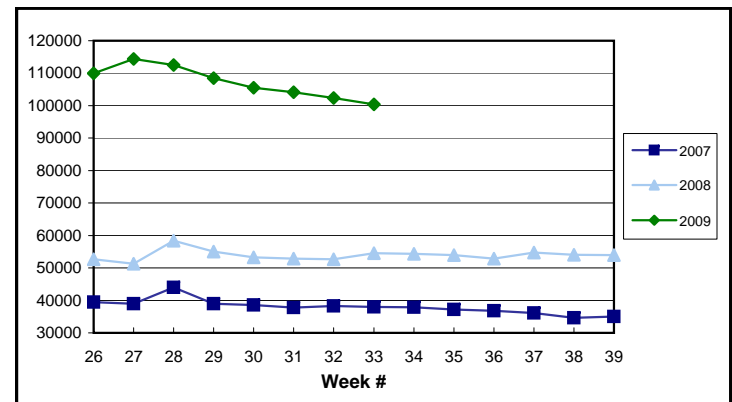
**EB Trigger: 6.56**



**Regular Initial Claims: 10,290**



**Regular Weeks Claimed: 100,358**



**Week # :** 33  
**Ending:** August 15, 2009

**This Week    Last Week    Cumulative**  
 YTD

<b>SELF EMPLOYMENT (SEA) MONTHLY<sup>5</sup></b>		July 2009	Cumulative
Referred		69	384
Enrolled		103	543
Completed		19	150
<b>Weeks Claimed</b>	<b>240</b>	<b>872</b>	<b>6,024</b>
<b>Gross Amount of Payments (\$) <sup>4</sup></b>	<b>110,215</b>	<b>384,434</b>	<b>2,589,253</b>
<b>SEA Benefit Payments (\$)</b>	<b>104,015</b>	<b>362,659</b>	<b>2,472,928</b>
<b>SEA Federal Additional Compensation (\$) <sup>3</sup></b>	<b>6,200</b>	<b>21,775</b>	<b>116,325</b>

<sup>5</sup> These are MONTHLY counts; data in BOLD is weekly.

<b>DISASTER UNEMPLOYMENT ASSISTANCE (DUA)</b>			
Initial Claims	0	0	0
Weeks Claimed	0	0	0
Gross Amount of Payments (\$)	0	0	0
Insured	0	0	0
Self Employed	0	0	0
Number Exhausting Benefits	0	0	0

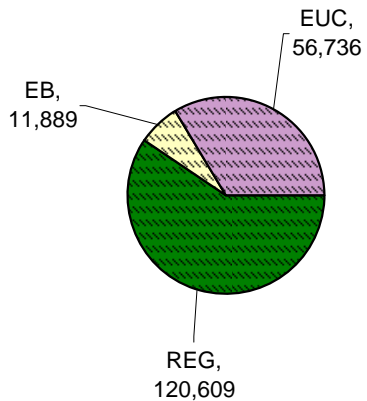
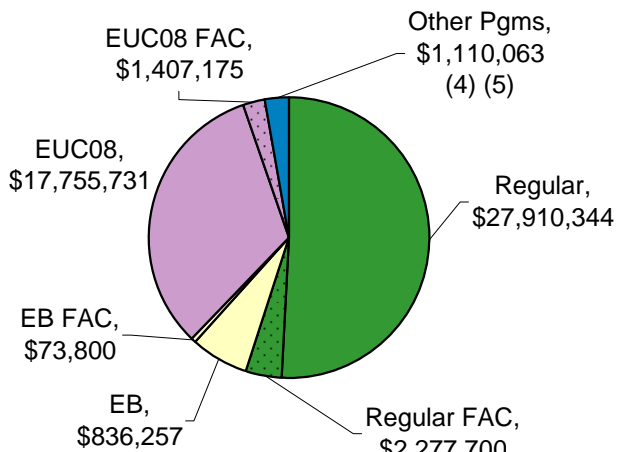
Announcement Date 12/12/2007

<b>EMERGENCY UNEMPLOYMENT COMPENSATION 08</b>			
Initial Claims (Excl. Liable)	3,750	3,874	88,098
Weeks Claimed (Excl. Liable)	56,736	54,856	1,321,997
Gross Amount of Payments (\$) <sup>4</sup>	19,162,906	18,529,932	423,872,246
EUC Benefit Payments (\$)	17,755,731	17,168,857	397,481,153
EUC Federal Additional Compensation (\$) <sup>3</sup>	1,407,175	1,361,075	26,391,093
Number Exhausting Tier 1 Benefits	1,189	1,181	38,679
Number Exhausting Tier 2 Benefits	613	633	20,144

EUC begins 07/06/2008

**Benefits Paid By Program**  
**Total Benefits Paid: \$54,839,699**

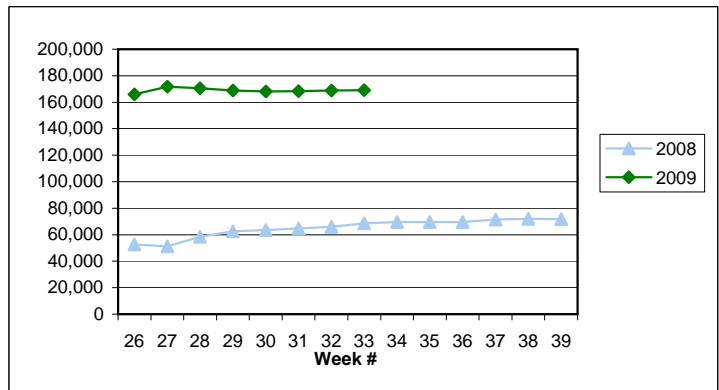
**Weeks Claimed - Program by Program**  
**Total: 168,983**



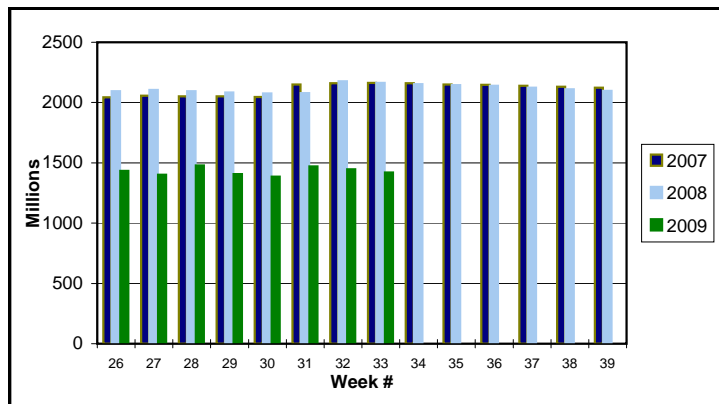
<sup>3</sup> Federal Additional Compensation program start 3/2/2009 - Adds and additional \$25 to all claims

<sup>4</sup> Includes FAC Payments

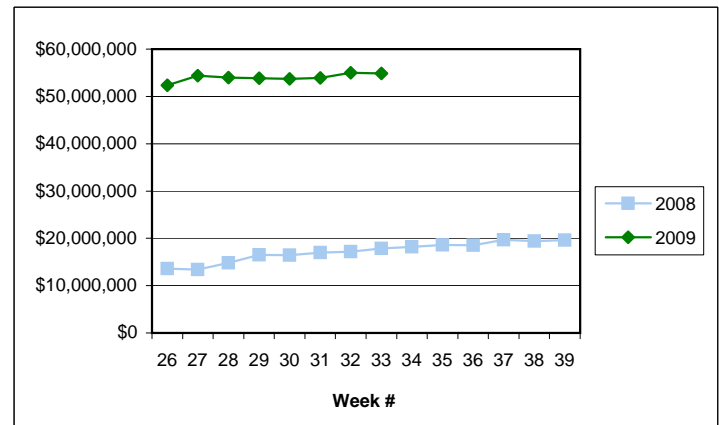
**Total Weeks Claimed (Regular + EB + EUC): 168,983**



**Trust Fund Balance: \$ 1,420.25 (in millions)**



**Total Benefits Paid: \$54,839,699**



<sup>5</sup> Other Programs Include AB, TRA, TAA, WS, TUI, SUD, SEA

For current and historic UI reports, visit:

<http://www.oregon.gov/EMPLOY/BUDGET/UI/index.shtml>

**(503) 947-1679**

[janet.l.orton@state.or.us](mailto:janet.l.orton@state.or.us)