

# UNEMPLOYMENT INSURANCE STATISTICS

State of Oregon  
EMPLOYMENT DEPARTMENT

UI Programs

Janet Orton

(503) 947-1679

janet.l.orton@state.or.us

www.WorkingInOregon.org

## LABOR FORCE DATA

Oregon Civilian Labor Force

Total Number Unemployed

## UNEMPLOYMENT RATES (CIVILIAN) (%)

Total Unemployment:

Seasonally Adjusted:

Labor Force & Rate Data:

[www.QualityInfo.org](http://www.QualityInfo.org)

Week # :	34				This Month	Last Month	Last Year
	Ending:	August 29, 2009			July 2009	June 2009	July 2008
					July 2009	June 2009	July 2008
					1,996,544	1,992,338	1,978,927
					232,782	236,323	120,582
					11.7	11.9	6.1
					9.7	9.7	6.0
					11.9	12.0	6.3
					9.4	9.5	5.7
					6.55	6.83	3.53
					9.00	3.95	9.09
					12.00	5.70	12.00
					42,939	48,368	33,596
					17,811	20,432	17,191
					23,322	26,140	15,014
					1,806	1,796	1,391
					1,064	1,159	877
					445,296	459,620	226,749
					427,705	441,830	217,542
					17,591	17,790	9,207
					13,149	13,087	6,766
					737	749	567
					9,585	11,585	11,549
					18,372	16,967	13,312
					420,203	446,462	208,518
					132,213,791	140,163,484	56,781,277
					122,337,491	129,734,134	56,781,227
					9,876,300	10,429,350	0
					314.64	313.94	272.31
					13.851	12.645	4.893
					1,385.45	1,423.77	2,074.30

<sup>1</sup> NTUR: Unemployment Compensation Amendment of 1992 specifies that a 2 month average NTUR be used to determine duration levels.

<sup>2</sup> Excludes WORKSHARE program

<sup>3</sup> Federal Additional Compensation program start 3/2/2009 - Adds and additional \$25 to all claims

<sup>4</sup> Includes FAC Payments

For current and historic UI reports, visit:

<http://www.oregon.gov/EMPLOY/BUDGET/UI/index.shtml>

<b>Week # :</b>	<b>34</b>
<b>Ending:</b>	<b>August 29, 2009</b>

	<b>This Week</b>	<b>Last Week</b>	<b>Cumulative YTD</b>
<b>EXTENDED BENEFITS (UI, UCFE, UCX)</b>			
Initial Claims (Excl. Liable)	785	548	16,705
Weeks Claimed (Excl. Liable)	12,202	11,889	151,569
Gross Amount of Payments (\$) <sup>4</sup>	4,125,275	4,000,087	53,864,887
EB Benefit Payments (\$)	3,812,750	3,695,712	49,693,537
EB Federal Additional Compensation (\$) <sup>3</sup>	312,525	304,375	4,171,350
Number Exhausting Benefits	60	82	718

Oregon HEB Trigger "ON" 02/15/2009.

For a list of states ON EB, visit:

[http://www.workforcesecurity.doleta.gov/unemploy/claims\\_arch.asp](http://www.workforcesecurity.doleta.gov/unemploy/claims_arch.asp)

<b>Misc Additional Benefits</b>			
Initial Claims (Excl. Liable)	1	4	87
Weeks Claimed (Excl. Liable)	49	50	1,327
Gross Amount of Payments (\$)	0	0	0
Number Exhausting Benefits	0	0	0

<b>TRADE ADJUSTMENT ACT</b>			
Training Plans	8	35	1,221
Initial Claims	60	42	3,482
Weeks Claimed	4	1	1,083
Gross Amount of TRA Payments (\$) <sup>4</sup>	1,128	459	414,447
TRA Benefit Payments (\$)	1,028	434	393,222
TRA Federal Additional Compensation (\$) <sup>3</sup>	100	25	21,225
Certifications	3	1	23
Gross Amount of TAA Payments (\$)	529	3,450	59,207

<b>WORKSHARE PROGRAM</b>			
Initial Claims	228	106	14,237
Weeks Claimed	4,578	4,266	162,367
Gross Amount of Payments (\$) <sup>4</sup>	568,960	531,691	18,052,887
WS Benefit Payments (\$)	462,385	433,116	15,083,763
WS Federal Additional Compensation (\$)	106,575	98,575	2,969,124

<b>TRAINING UI (TUI)</b>			
Applications Accepted	154	101	4,623
Approved	125	95	3,961
Weeks Claimed	2,291	2,311	60,002
Gross Amount of Payments (\$) <sup>4</sup>	834,821	842,386	21,141,541
TUI Benefit Payments (\$)	777,146	784,036	19,877,386
TUI Federal Additional Compensation (\$)	57,675	58,350	1,264,155

<b>SUD</b>			
Initial Claims	1	1	10
Weeks Claimed	4	2	116
Gross Amount of Payments (\$) <sup>4</sup>	1,013	461	42,702
SUD Benefit Payments (\$)	838	386	39,352
SUD Federal Additional Compensation (\$)	175	75	3,350

<sup>3</sup> Federal Additional Compensation program start 3/2/2009 - Adds and additional \$25 to all claims

<sup>4</sup> Includes FAC Payments

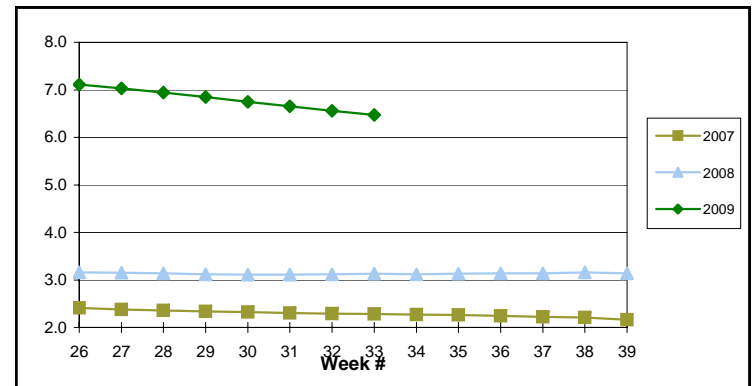
For current and historic UI reports, visit:

<http://www.oregon.gov/EMPLOY/BUDGET/UI/index.shtml>

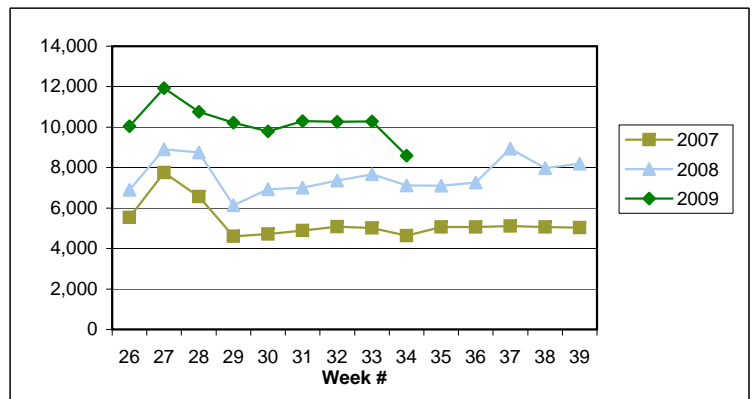
(503) 947-1679

janet.l.orton@state.or.us

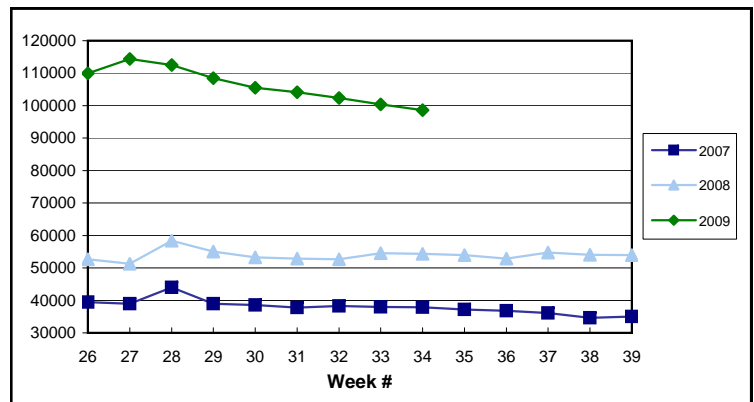
EB Trigger: **6.47**



Regular Initial Claims: **8,591**



Regular Weeks Claimed: **98,581**



**Week # :** 34  
**Ending:** August 29, 2009

**This Week**    **Last Week**    **Cumulative**  
 YTD

SELF EMPLOYMENT (SEA) MONTHLY <sup>5</sup>		Aug '09	Cumulative
Referred		35	419
Enrolled		98	641
Completed		37	187
<b>Weeks Claimed</b>	<b>235</b>	<b>1,202</b>	<b>6,259</b>
<b>Gross Amount of Payments (\$) <sup>4</sup></b>	<b>105,333</b>	<b>531,720</b>	<b>2,694,586</b>
<b>SEA Benefit Payments (\$)</b>	<b>99,458</b>	<b>501,745</b>	<b>2,566,186</b>
<b>SEA Federal Additional Compensation (\$) <sup>3</sup></b>	<b>5,875</b>	<b>29,975</b>	<b>128,400</b>

<sup>5</sup> These are MONTHLY counts; data in BOLD is weekly.

DISASTER UNEMPLOYMENT ASSISTANCE (DUA)			
Initial Claims	0	0	0
Weeks Claimed	0	0	0
Gross Amount of Payments (\$)	0	0	0
Insured	0	0	0
Self Employed	0	0	0
Number Exhausting Benefits	0	0	0

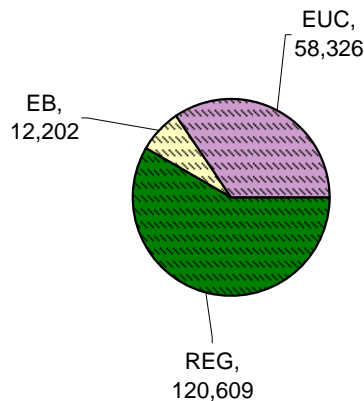
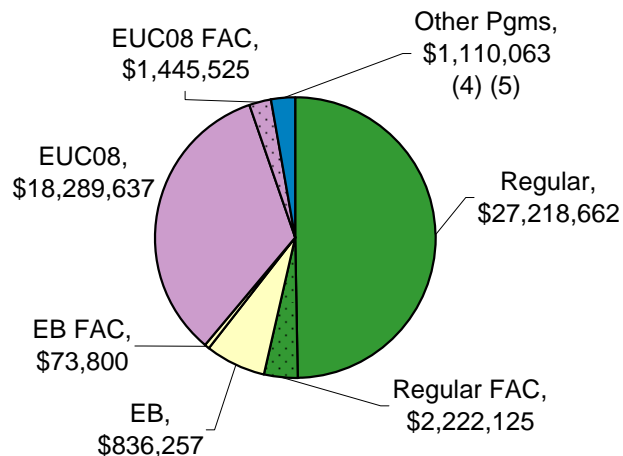
Announcement Date 12/12/2007

EMERGENCY UNEMPLOYMENT COMPENSATION 08			
Initial Claims (Excl. Liable)	3,429	3,750	91,527
Weeks Claimed (Excl. Liable)	58,326	56,736	1,380,323
Gross Amount of Payments (\$) <sup>4</sup>	19,735,162	19,162,906	443,607,408
EUC Benefit Payments (\$)	18,289,637	17,755,731	415,770,790
EUC Federal Additional Compensation (\$) <sup>3</sup>	1,445,525	1,407,175	27,836,618
Number Exhausting Tier 1 Benefits	1,401	1,189	38,747
Number Exhausting Tier 2 Benefits	984	613	20,181

EUC begins 07/06/2008

**Benefits Paid By Program**  
**Total Benefits Paid: \$54,813,008**

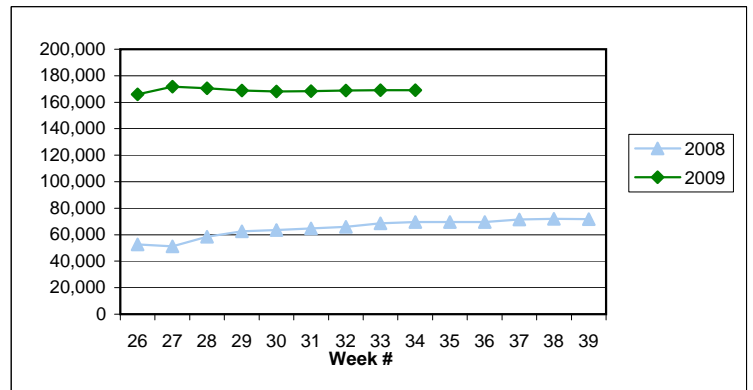
**Weeks Claimed - Program by Program**  
**Total: 169,109**



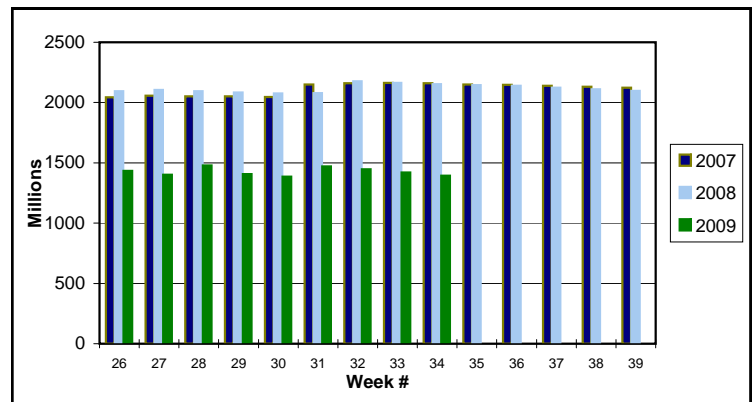
<sup>3</sup> Federal Additional Compensation program start 3/2/2009 - Adds and additional \$25 to all claims

<sup>4</sup> Includes FAC Payments

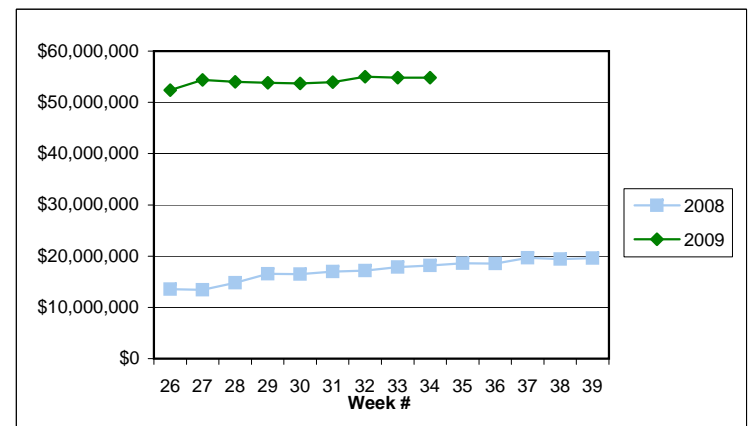
**Total Weeks Claimed (Regular + EB + EUC): 169,109**



**Trust Fund Balance: \$ 1,394.42 (in millions)**



**Total Benefits Paid: \$54,813,008**



For current and historic UI reports, visit:

<http://www.oregon.gov/EMPLOY/BUDGET/UI/index.shtml>

(503) 947-1679

janet.l.orton@state.or.us