

# UNEMPLOYMENT INSURANCE STATISTICS

State of Oregon  
EMPLOYMENT DEPARTMENT

UI Programs

Janet Orton

(503) 947-1679

janet.l.orton@state.or.us

www.WorkingInOregon.org

## LABOR FORCE DATA

Oregon Civilian Labor Force

Total Number Unemployed

## UNEMPLOYMENT RATES (CIVILIAN) (%)

Total Unemployment:

Seasonally Adjusted:

	This Month July 2009	Last Month June 2009	Last Year July 2008
Oregon Civilian Labor Force	1,996,544	1,992,338	1,978,927
Total Number Unemployed	232,782	236,323	120,582
Labor Force & Rate Data: <a href="http://www.QualityInfo.org">www.QualityInfo.org</a>			
Oregon	11.7	11.9	6.1
National	9.7	9.7	6.0
Oregon	11.9	12.0	6.3
National	9.4	9.5	5.7

Week # :	35
Ending:	September 5, 2009

	THIS WEEK		LAST WEEK		This Month July 2009	Last Month Jul 2009	Last Year Aug 2008
	2009	2008	2009	2008			
<b>UNEMPLOYMENT RATES (%)</b>							
Insured Unemployment: Oregon	5.69	3.14	5.86	3.17	5.96	6.55	2.99
EB Trigger	6.37	3.13	6.47	3.12			
Adjusted Insured Unemployment	8.89	3.96	9.00	3.95			
National Average TUR <sup>1</sup>	12.00	5.70	12.00	5.70			
<b>REGULAR CLAIMS (UI, UCFE, UCX)</b>							
<b>Initial Claims (Excl. Liable) <sup>2</sup></b>	<b>9,118</b>	<b>7,096</b>	<b>8,591</b>	<b>7,111</b>	<b>49,246</b>	<b>42,939</b>	<b>30,359</b>
Oregon - New	3,194	3,390	2,959	3,417	19,240	17,811	14,212
Additional	5,248	3,392	5,155	3,320	27,615	23,322	14,657
Interstate - Agent	676	314	477	374	2,391	1,806	1,490
Interstate - Liable	246	186	243	159	1,392	1,064	755
<b>Weeks Claimed (Excl. Liable) <sup>2</sup></b>	<b>95,781</b>	<b>53,906</b>	<b>98,581</b>	<b>54,342</b>	<b>510,848</b>	<b>445,296</b>	<b>216,977</b>
Oregon	91,319	51,714	94,045	51,874	488,154	427,705	207,396
Interstate - Agent	4,462	2,192	4,536	2,468	22,694	17,591	9,581
Interstate - Liable	3,224	1,684	3,206	1,654	16,055	13,149	6,668
<b>New Combined Wage Claims</b>	<b>134</b>	<b>139</b>	<b>171</b>	<b>103</b>	<b>863</b>	<b>737</b>	<b>553</b>
<b>Non-monetary Determinations &amp; Redeter.</b>	<b>2,837</b>	<b>2,705</b>	<b>3,327</b>	<b>2,788</b>	<b>17,053</b>	<b>9,585</b>	<b>12,836</b>
<b>PAYMENTS: REGULAR BENEFITS</b>							
First Payments	3,282	2,782	3,536	2,973	18,572	18,372	10,954
Checks Issued	91,590	50,477	94,638	49,788	491,740	420,203	199,315
Gross Amount of Payments (\$) <sup>2,4</sup>	28,553,925	13,832,791	29,440,787	13,613,227	153,697,581	132,213,791	54,443,150
Regular Benefit Payments (\$)	26,403,175	13,832,791	27,218,662	13,613,227	142,144,831	122,337,491	56,781,227
Regular Federal Additional Compensation (\$) <sup>3</sup>	2,150,750	0	2,222,125	0	11,552,750	9,876,300	0
Average Check Amount (\$) <sup>2,4</sup>	<b>311.76</b>	<b>274.04</b>	<b>311.09</b>	<b>273.42</b>	<b>312.56</b>	<b>313.94</b>	<b>272.31</b>
Number Exhausting Benefits	2,976	1,012	3,146	1,027	16,905	13,851	4,363
<b>TRUST FUND</b>							
Balance (in Millions) (\$)	\$ 1,361.33	\$ 2,145.02	\$ 1,394.42	\$ 2,161.85	\$ 1,394.05	\$ 1,385.45	\$ 2,145.02

<sup>1</sup> NTUR: Unemployment Compensation Amendment Of 1992 specifies that a 2 month average NTUR be used to determine duration levels.

<sup>2</sup> Excludes WORKSHARE program

<sup>3</sup> Federal Additional Compensation program start 3/2/2009 - Adds and additional \$25 to all claims

<sup>4</sup> Includes FAC Payments

For current and historic UI reports, visit:

<http://www.oregon.gov/EMPLOY/BUDGET/UI/index.shtml>

**Week # :** 35  
**Ending:** September 5, 2009

	This Week	Last Week	Cumulative YTD
<b>EXTENDED BENEFITS (UI, UCFE, UCX)</b>			
Initial Claims (Excl. Liable)	713	785	17,418
Weeks Claimed (Excl. Liable)	12,704	12,202	164,273
Gross Amount of Payments (\$) <sup>4</sup>	4,279,627	4,125,275	58,144,514
EB Benefit Payments (\$)	3,953,777	3,812,750	53,647,314
EB Federal Additional Compensation (\$) <sup>3</sup>	325,850	312,525	4,497,200
Number Exhausting Benefits	2,307	60	3,025

Oregon HEB Trigger "ON" 02/15/2009.

For a list of states ON EB, visit:

[http://www.workforcesecurity.doleta.gov/unemploy/claims\\_arch.asp](http://www.workforcesecurity.doleta.gov/unemploy/claims_arch.asp)

<b>Misc Additional Benefits</b>			
Initial Claims (Excl. Liable)	2	1	89
Weeks Claimed (Excl. Liable)	49	49	1,376
Gross Amount of Payments (\$)	0	0	0
Number Exhausting Benefits	0	0	0

<b>TRADE ADJUSTMENT ACT</b>			
Training Plans	12	8	1,233
Initial Claims	54	60	3,536
Weeks Claimed	2	4	1,085
Gross Amount of TRA Payments (\$) <sup>4</sup>	588	1,128	415,035
TRA Benefit Payments (\$)	538	1,028	393,760
TRA Federal Additional Compensation (\$) <sup>3</sup>	50	100	21,275
Certifications	5	3	28
Gross Amount of TAA Payments (\$)	5,062	529	64,269

<b>WORKSHARE PROGRAM</b>			
Initial Claims	159	228	14,396
Weeks Claimed	4,018	4,578	166,385
Gross Amount of Payments (\$) <sup>4</sup>	503,155	568,960	18,556,042
WS Benefit Payments (\$)	409,730	462,385	15,493,493
WS Federal Additional Compensation (\$)	93,425	106,575	3,062,549

<b>TRAINING UI (TUI)</b>			
Applications Accepted	164	154	4,787
Approved	152	125	4,113
Weeks Claimed	2,269	2,291	62,271
Gross Amount of Payments (\$) <sup>4</sup>	822,056	834,821	21,963,597
TUI Benefit Payments (\$)	765,031	777,146	20,642,417
TUI Federal Additional Compensation (\$)	57,025	57,675	1,321,180

<b>SUD</b>			
Initial Claims	7	1	17
Weeks Claimed	4	4	120
Gross Amount of Payments (\$) <sup>4</sup>	737	1,013	43,439
SUD Benefit Payments (\$)	612	838	39,964
SUD Federal Additional Compensation (\$)	125	175	3,475

<sup>3</sup> Federal Additional Compensation program start 3/2/2009 - Adds and additional \$25 to all claims

<sup>4</sup> Includes FAC Payments

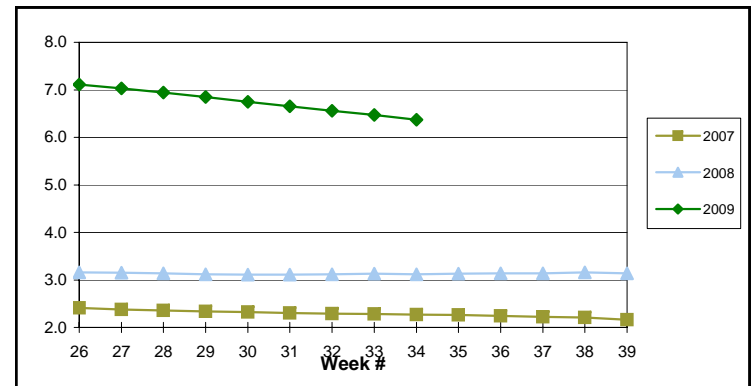
For current and historic UI reports, visit:

<http://www.oregon.gov/EMPLOY/BUDGET/UI/index.shtml>

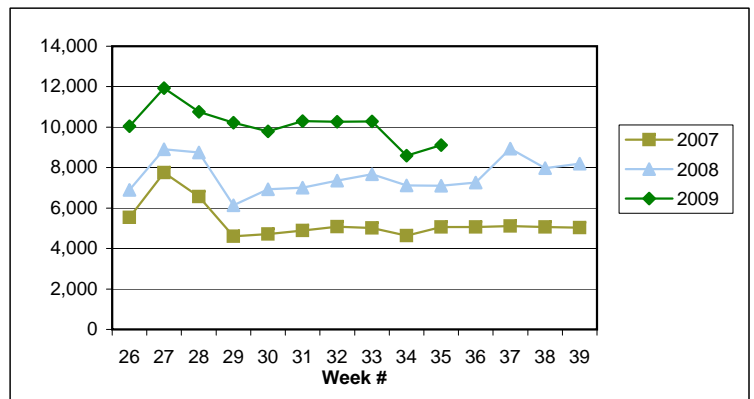
(503) 947-1679

janet.l.orton@state.or.us

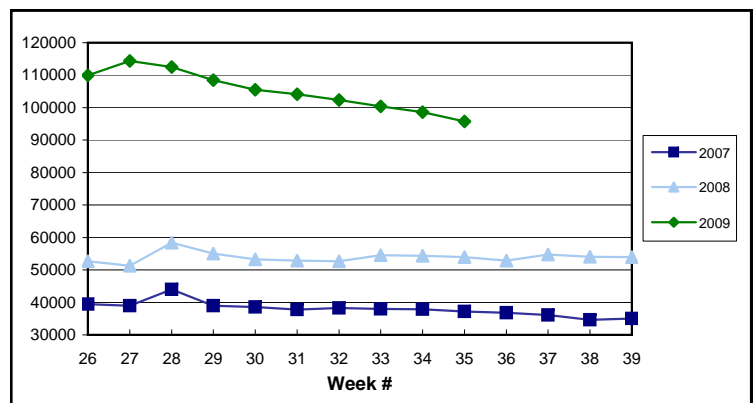
EB Trigger: 6.37



Regular Initial Claims: 9,118



Regular Weeks Claimed: 95,781



**Week # :** 35  
**Ending:** September 5, 2009

**This Week**    **Last Week**    **Cumulative**  
 YTD

<b>SELF EMPLOYMENT (SEA) MONTHLY<sup>5</sup></b>		<b>Aug '09</b>	<b>Cumulative</b>
Referred		35	419
Enrolled		98	641
Completed		37	187
<b>Weeks Claimed</b>	<b>246</b>	<b>1,202</b>	<b>6,505</b>
<b>Gross Amount of Payments (\$) <sup>4</sup></b>	<b>106,618</b>	<b>531,720</b>	<b>2,801,204</b>
<b>SEA Benefit Payments (\$)</b>	<b>100,512</b>	<b>501,745</b>	<b>2,666,698</b>
<b>SEA Federal Additional Compensation (\$) <sup>3</sup></b>	<b>6,106</b>	<b>29,975</b>	<b>134,506</b>

<sup>5</sup> These are MONTHLY counts; data in **BOLD** is weekly.

<b>DISASTER UNEMPLOYMENT ASSISTANCE (DUA)</b>			
Initial Claims	0	0	0
Weeks Claimed	0	0	0
Gross Amount of Payments (\$)	0	0	0
Insured	0	0	0
Self Employed	0	0	0
Number Exhausting Benefits	0	0	0

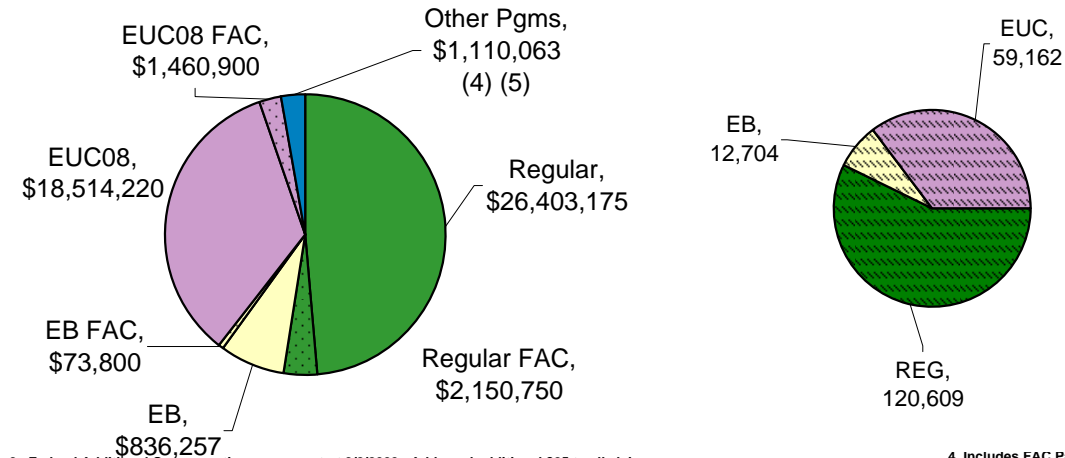
Announcement Date 12/12/2007

<b>EMERGENCY UNEMPLOYMENT COMPENSATION 08</b>			
Initial Claims (Excl. Liable)	3,433	3,429	94,960
Weeks Claimed (Excl. Liable)	59,162	58,326	1,439,485
Gross Amount of Payments (\$) <sup>4</sup>	19,975,120	19,735,162	463,582,528
EUC Benefit Payments (\$)	18,514,220	18,289,637	434,285,010
EUC Federal Additional Compensation (\$) <sup>3</sup>	1,460,900	1,445,525	29,297,518
Number Exhausting Tier 1 Benefits	1,366	1,401	40,113
Number Exhausting Tier 2 Benefits	852	984	21,033

EUC begins 07/06/2008

**Benefits Paid By Program**  
**Total Benefits Paid: \$54,246,888**

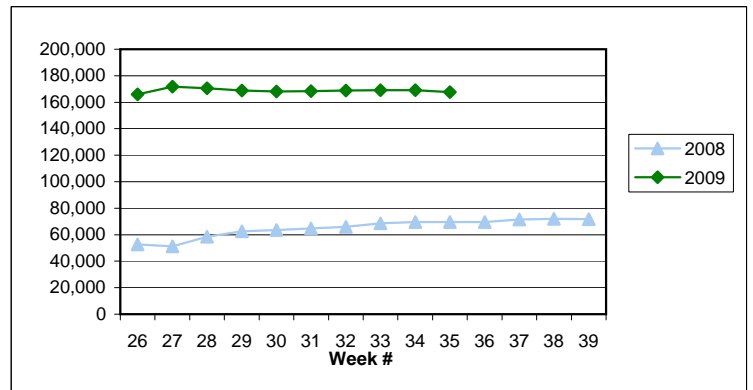
**Weeks Claimed - Program by Program**  
**Total: 167,647**



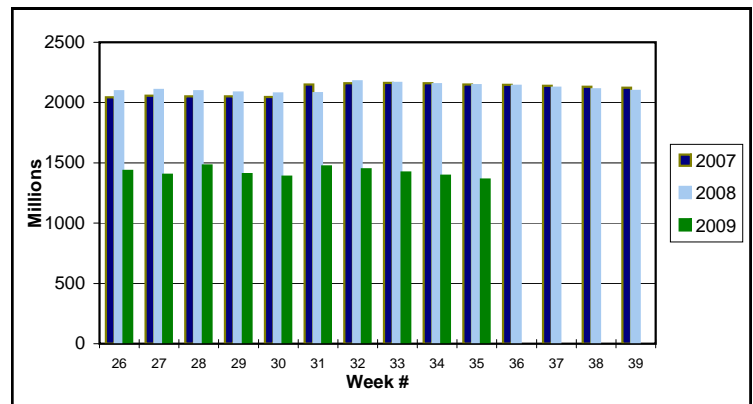
<sup>3</sup> Federal Additional Compensation program start 3/2/2009 - Adds and additional \$25 to all claims

<sup>4</sup> Includes FAC Payments

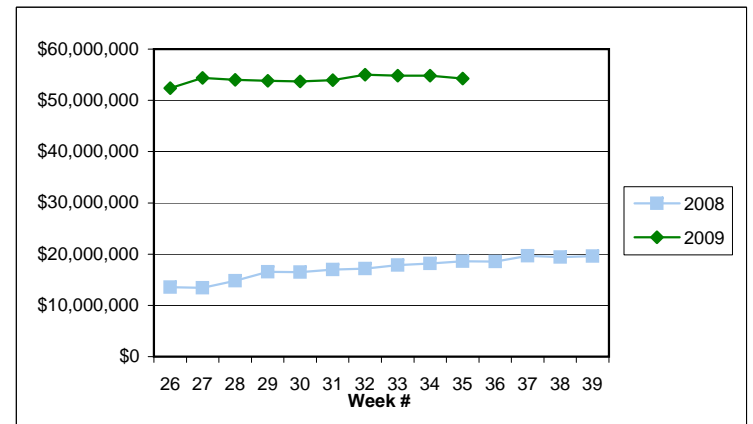
**Total Weeks Claimed (Regular + EB + EUC): 167,647**



**Trust Fund Balance: \$ 1,361.33 (in millions)**



**Total Benefits Paid: \$54,246,888**



For current and historic UI reports, visit:

<http://www.oregon.gov/EMPLOY/BUDGET/UI/index.shtml>

**(503) 947-1679**

[janet.l.orton@state.or.us](mailto:janet.l.orton@state.or.us)