

# UNEMPLOYMENT INSURANCE STATISTICS

State of Oregon  
EMPLOYMENT DEPARTMENT

UI Programs  
Janet Orton

(503) 947-1679

janet.l.orton@state.or.us

www.WorkingInOregon.org

LABOR FORCE DATA					This Month	Last Month	Last Year	
					Aug 2009	Jul 2009	Aug 2008	
Oregon Civilian Labor Force					1,986,238	1,992,340	1,981,775	
Total Number Unemployed					235,745	228,836	126,604	
UNEMPLOYMENT RATES (CIVILIAN) (%)					Labor Force & Rate Data: <a href="http://www.QualityInfo.org">www.QualityInfo.org</a>			
Total Unemployment:					Oregon	11.9	11.5	6.4
					National	9.6	9.7	6.1
Seasonally Adjusted:					Oregon	12.2	11.8	6.5
					National	9.7	9.4	6.1
Week # :	36	THIS WEEK		LAST WEEK		This Month	Last Month	Last Year
Ending:	September 12, 2009	2009	2008	2009	2008	Aug 2009	Jul 2009	Aug 2008
UNEMPLOYMENT RATES (%)								
Insured Unemployment: Oregon		5.56	3.09	5.69	3.14	5.96	6.55	2.99
EB Trigger		6.27	3.12	6.37	3.13			
Adjusted Insured Unemployment		9.04	3.95	8.89	3.96			
National Average TUR <sup>1</sup>		12.00	5.70	12.00	5.70			
REGULAR CLAIMS (UI, UCFE, UCX)					This Month	Last Month	Last Year	
					Aug 2009	Jul 2009	Aug 2008	
Initial Claims (Excl. Liable) <sup>2</sup>		9,685	7,255	9,118	7,096	49,246	42,939	30,359
Oregon - New		3,877	2,557	3,194	3,390	19,240	17,811	14,212
Additional		5,347	4,373	5,248	3,392	27,615	23,322	14,657
Interstate - Agent		461	325	676	314	2,391	1,806	1,490
Interstate - Liable		249	167	246	186	1,392	1,064	755
Weeks Claimed (Excl. Liable) <sup>2</sup>		93,450	52,916	95,781	53,906	510,848	445,296	216,977
Oregon		89,094	50,606	91,319	51,714	488,154	427,705	207,396
Interstate - Agent		4,356	2,310	4,462	2,192	22,694	17,591	9,581
Interstate - Liable		3,048	1,637	3,224	1,684	16,055	13,149	6,668
New Combined Wage Claims		133	108	134	139	863	737	553
Non-monetary Determinations & Redeter.		2,526	2,304	2,837	2,705	17,053	9,585	12,836
PAYMENTS: REGULAR BENEFITS								
First Payments		2,987	2,487	3,282	2,782	18,572	18,372	10,954
Checks Issued		88,101	49,354	91,590	50,477	491,740	420,203	199,315
Gross Amount of Payments (\$) <sup>2,4</sup>		27,608,811	13,624,438	28,553,925	13,832,791	153,697,581	132,213,791	54,443,150
Regular Benefit Payments (\$)		25,538,036	13,624,438	26,403,175	13,832,791	142,144,831	122,337,491	56,781,227
Regular Federal Additional Compensation (\$) <sup>3</sup>		2,070,775	0	2,150,750	0	11,552,750	9,876,300	0
Average Check Amount (\$) <sup>2,4</sup>		313.38	276.06	311.76	274.04	312.56	313.94	272.31
Number Exhausting Benefits		3,267	1,109	2,976	1,012	16,905	13,851	4,363
TRUST FUND								
Balance (in Millions) (\$)		\$ 1,343.88	\$ 2,137.79	\$ 1,361.33	\$ 2,145.02	\$ 1,394.05	\$ 1,385.45	\$ 2,145.02

<sup>1</sup> NTUR: Unemployment Compensation Amendment of 1992 specifies that a 2 month average NTUR be used to determine duration levels.

<sup>2</sup> Excludes WORKSHARE program

<sup>3</sup> Federal Additional Compensation program start 3/2/2009 - Adds and additional \$25 to all claims

<sup>4</sup> Includes FAC Payments

For current and historic UI reports, visit:

<http://www.oregon.gov/EMPLOY/BUDGET/UI/index.shtml>

**Week # :** 36  
**Ending:** September 12, 2009

	This Week	Last Week	Cumulative YTD
<b>EXTENDED BENEFITS (UI, UCFE, UCX)</b>			
Initial Claims (Excl. Liable)	598	713	18,016
Weeks Claimed (Excl. Liable)	10,779	12,704	175,052
Gross Amount of Payments (\$) <sup>4</sup>	3,571,340	4,279,627	61,715,854
EB Benefit Payments (\$)	3,297,740	3,953,777	56,945,054
EB Federal Additional Compensation (\$) <sup>3</sup>	273,600	325,850	4,770,800
Number Exhausting Benefits	714	2,307	4,223

Oregon HEB Trigger "ON" 02/15/2009.

For a list of states ON EB, visit:

[http://www.workforcesecurity.doleta.gov/unemploy/claims\\_arch.asp](http://www.workforcesecurity.doleta.gov/unemploy/claims_arch.asp)

<b>Misc Additional Benefits</b>			
Initial Claims (Excl. Liable)	4	2	93
Weeks Claimed (Excl. Liable)	50	49	1,426
Gross Amount of Payments (\$)	0	0	0
Number Exhausting Benefits	0	0	0

<b>TRADE ADJUSTMENT ACT</b>			
Training Plans	18	12	1,251
Initial Claims	55	54	3,591
Weeks Claimed	72	2	1,157
Gross Amount of TRA Payments (\$) <sup>4</sup>	28,580	588	443,615
TRA Benefit Payments (\$)	26,780	538	420,540
TRA Federal Additional Compensation (\$) <sup>3</sup>	1,800	50	23,075
Certifications	0	5	28
Gross Amount of TAA Payments (\$)	0	5,062	64,269

<b>WORKSHARE PROGRAM</b>			
Initial Claims	307	159	14,703
Weeks Claimed	4,445	4,018	170,830
Gross Amount of Payments (\$) <sup>4</sup>	542,249	503,155	19,098,291
WS Benefit Payments (\$)	442,649	409,730	15,936,142
WS Federal Additional Compensation (\$)	99,600	93,425	3,162,149

<b>TRAINING UI (TUI)</b>			
Applications Accepted	182	164	4,969
Approved	153	152	4,266
Weeks Claimed	2,203	2,269	64,474
Gross Amount of Payments (\$) <sup>4</sup>	773,073	822,056	22,736,670
TUI Benefit Payments (\$)	719,563	765,031	21,361,980
TUI Federal Additional Compensation (\$)	53,510	57,025	1,374,690

<b>SUD</b>			
Initial Claims	3	7	20
Weeks Claimed	14	4	134
Gross Amount of Payments (\$) <sup>4</sup>	4,485	737	47,924
SUD Benefit Payments (\$)	4,085	612	44,049
SUD Federal Additional Compensation (\$)	400	125	3,875

<sup>3</sup> Federal Additional Compensation program start 3/2/2009 - Adds and additional \$25 to all claims

<sup>4</sup> Includes FAC Payments

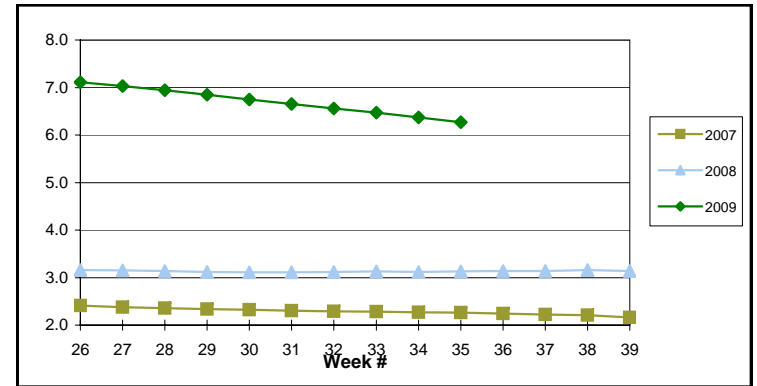
For current and historic UI reports, visit:

<http://www.oregon.gov/EMPLOY/BUDGET/UI/index.shtml>

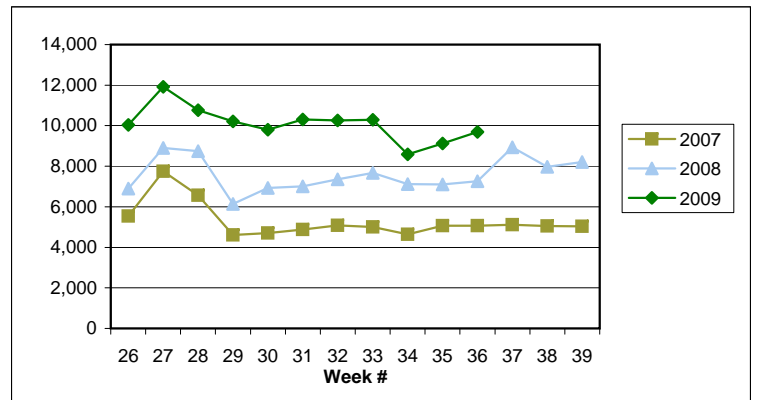
(503) 947-1679

✉ [janet.l.orton@state.or.us](mailto:janet.l.orton@state.or.us)

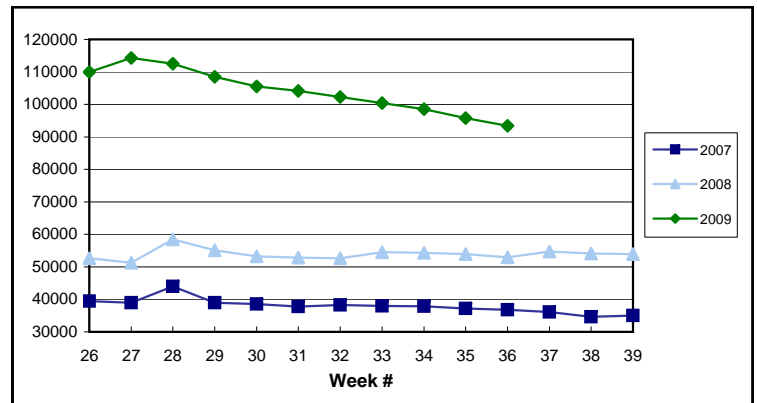
EB Trigger: 6.27



Regular Initial Claims: 9,685



Regular Weeks Claimed: 93,450



**Week # :** 36  
**Ending:** September 12, 2009

**This Week**    **Last Week**    **Cumulative**  
 YTD

SELF EMPLOYMENT (SEA) MONTHLY <sup>5</sup>		Aug '09	Cumulative
Referred		35	419
Enrolled		98	641
Completed		37	187
<b>Weeks Claimed</b>	<b>226</b>	1,202	<b>6,731</b>
<b>Gross Amount of Payments (\$)<sup>4</sup></b>	<b>98,076</b>	531,720	<b>2,899,280</b>
<b>SEA Benefit Payments (\$)</b>	<b>92,501</b>	501,745	<b>2,759,199</b>
<b>SEA Federal Additional Compensation (\$)<sup>3</sup></b>	<b>5,575</b>	29,975	<b>140,081</b>

<sup>5</sup> These are MONTHLY counts; data in **BOLD** is weekly.

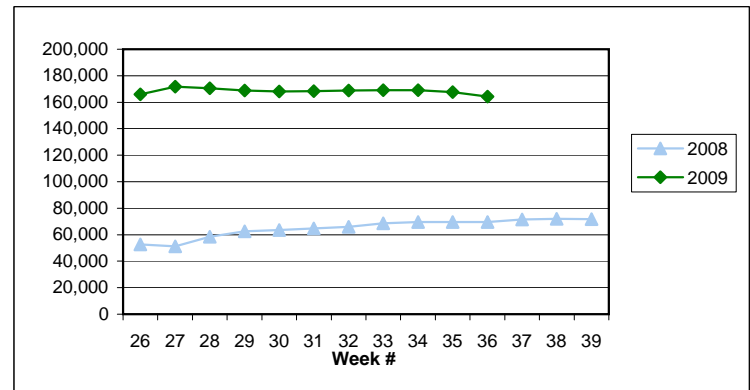
DISASTER UNEMPLOYMENT ASSISTANCE (DUA)			
Initial Claims	0	0	0
Weeks Claimed	0	0	0
Gross Amount of Payments (\$)	0	0	0
Insured	0	0	0
Self Employed	0	0	0
Number Exhausting Benefits	0	0	0

Announcement Date 12/12/2007

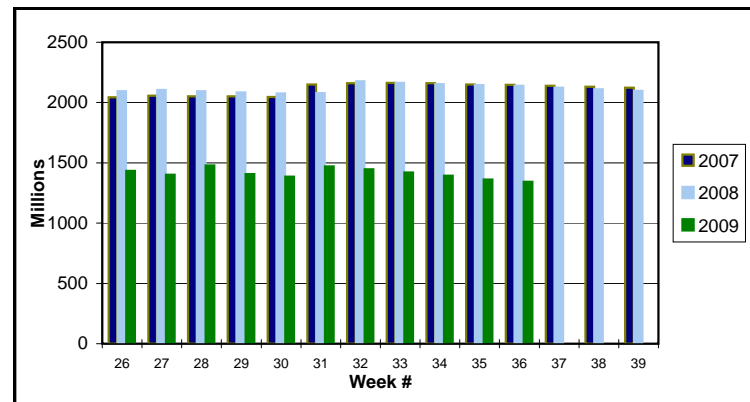
EMERGENCY UNEMPLOYMENT COMPENSATION 08			
Initial Claims (Excl. Liable)	2,894	3,433	97,854
Weeks Claimed (Excl. Liable)	60,058	59,162	1,499,543
Gross Amount of Payments (\$) <sup>4</sup>	20,209,048	19,975,120	483,791,576
EUC Benefit Payments (\$)	18,733,473	18,514,220	453,018,483
EUC Federal Additional Compensation (\$) <sup>3</sup>	1,475,575	1,460,900	30,773,093
Number Exhausting Tier 1 Benefits	1,458	1,366	41,571
Number Exhausting Tier 2 Benefits	846	852	21,879

EUC begins 07/06/2008

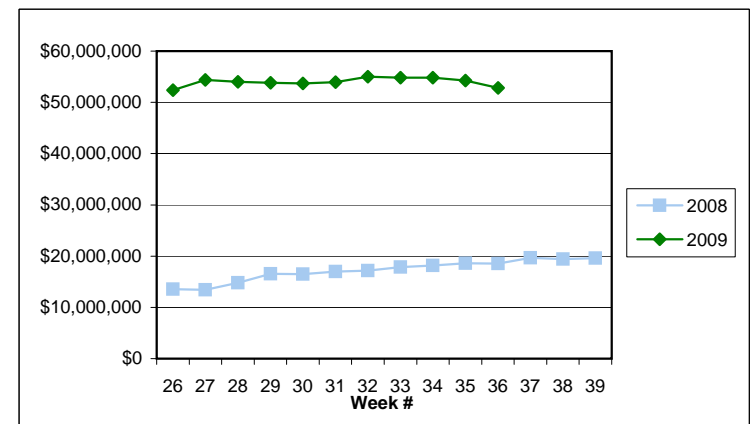
**Total Weeks Claimed (Regular + EB + EUC): 164,287**



**Trust Fund Balance: \$ 1,343.88 (in millions)**

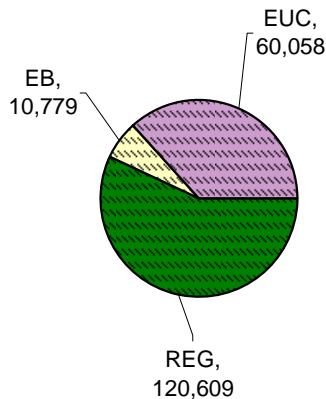
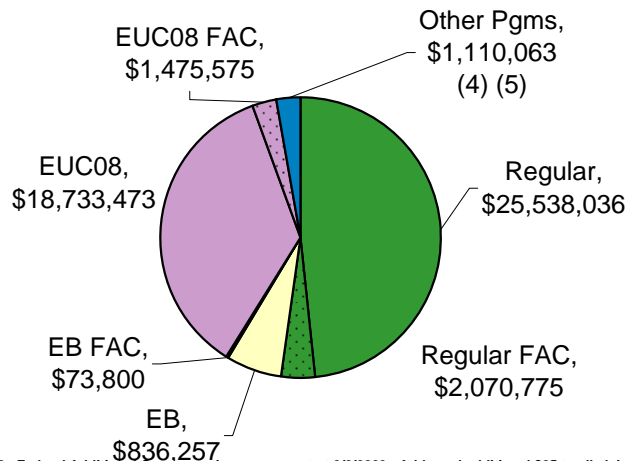


**Total Benefits Paid: \$52,835,662**



**Benefits Paid By Program**  
**Total Benefits Paid: \$52,835,662**

**Weeks Claimed - Program by Program**  
**Total: 164,287**



<sup>3</sup> Federal Additional Compensation program start 3/2/2009 - Adds and additional \$25 to all claims

<sup>4</sup> Includes FAC Payments

<sup>5</sup> Other Programs Include AB, TRA, TAA, WS, TUI, SUD, SEA

For current and historic UI reports, visit:

<http://www.oregon.gov/EMPLOY/BUDGET/UI/index.shtml>

(503) 947-1679

janet.l.orton@state.or.us