

# UNEMPLOYMENT INSURANCE STATISTICS

State of Oregon  
EMPLOYMENT DEPARTMENT

UI Programs  
Janet Orton

(503) 947-1679

janet.l.orton@state.or.us

www.WorkingInOregon.org

LABOR FORCE DATA		This Month	Last Month	Last Year
		Aug 2009	Jul 2009	Aug 2008
Oregon Civilian Labor Force		1,986,238	1,992,340	1,981,775
Total Number Unemployed		235,745	228,836	126,604

UNEMPLOYMENT RATES (CIVILIAN) (%)		Labor Force & Rate Data: <a href="http://www.QualityInfo.org">www.QualityInfo.org</a>		
Total Unemployment:	Oregon	11.9	11.5	6.4
	National	9.6	9.7	6.1
Seasonally Adjusted:	Oregon	12.2	11.8	6.5
	National	9.7	9.4	6.1

Week # :	37
Ending:	September 19, 2009

	THIS WEEK		LAST WEEK		This Month	Last Month	Last Year
	2009	2008	2009	2008	Aug 2009	Jul 2009	Aug 2008
<b>UNEMPLOYMENT RATES (%)</b>							
Insured Unemployment: Oregon	5.45	3.19	5.56	3.09	5.96	6.55	2.99
EB Trigger	6.17	3.13	6.27	3.12			
Adjusted Insured Unemployment	8.94	3.96	8.80	3.95			
National Average TUR <sup>1</sup>	12.00	5.70	12.00	5.70			
<b>REGULAR CLAIMS (UI, UCFE, UCX)</b>					<b>Aug 2009</b>	<b>Jul 2009</b>	<b>Aug 2008</b>
<b>Initial Claims (Excl. Liable)<sup>2</sup></b>	<b>8,803</b>	<b>8,936</b>	<b>9,685</b>	<b>7,255</b>	<b>49,246</b>	<b>42,939</b>	<b>30,359</b>
Oregon - New	3,447	4,521	3,877	2,557	19,240	17,811	14,212
Additional	4,944	4,125	5,347	4,373	27,615	23,322	14,657
Interstate - Agent	412	290	461	325	2,391	1,806	1,490
Interstate - Liable	310	235	249	167	1,392	1,064	755
<b>Weeks Claimed (Excl. Liable)<sup>2</sup></b>	<b>91,612</b>	<b>54,695</b>	<b>93,450</b>	<b>52,916</b>	<b>510,848</b>	<b>445,296</b>	<b>216,977</b>
Oregon	87,158	52,409	89,094	50,606	488,154	427,705	207,396
Interstate - Agent	4,454	2,286	4,356	2,310	22,694	17,591	9,581
Interstate - Liable	3,144	1,741	3,048	1,637	16,055	13,149	6,668
<b>New Combined Wage Claims</b>	<b>191</b>	<b>138</b>	<b>133</b>	<b>108</b>	<b>863</b>	<b>737</b>	<b>553</b>
<b>Non-monetary Determinations &amp; Redeter.</b>	<b>2,789</b>	<b>2,852</b>	<b>2,526</b>	<b>2,304</b>	<b>17,053</b>	<b>9,585</b>	<b>12,836</b>
<b>PAYMENTS: REGULAR BENEFITS</b>							
First Payments	3,519	2,934	2,987	2,487	18,572	18,372	10,954
Checks Issued	86,537	51,125	88,101	49,354	491,740	420,203	199,315
Gross Amount of Payments (\$) <sup>2,4</sup>	27,039,008	14,484,211	27,608,811	13,624,438	153,697,581	132,213,791	54,443,150
Regular Benefit Payments (\$)	25,016,433	14,484,211	25,538,036	13,624,438	142,144,831	122,337,491	56,781,227
Regular Federal Additional Compensation (\$) <sup>3</sup>	2,022,575	0	2,070,775	0	11,552,750	9,876,300	0
Average Check Amount (\$) <sup>2,4</sup>	<b>312.46</b>	<b>283.31</b>	<b>313.38</b>	<b>276.06</b>	<b>312.56</b>	<b>313.94</b>	<b>272.31</b>
Number Exhausting Benefits	2,931	1,124	3,267	1,109	16,905	13,851	4,363
<b>TRUST FUND</b>							
Balance (in Millions) (\$)	\$ 1,318.33	\$ 2,124.31	\$ 1,343.88	\$ 2,137.79	\$ 1,394.05	\$ 1,385.45	\$ 2,145.02

<sup>1</sup> NTUR: Unemployment Compensation Amendment of 1992 specifies that a 2 month average NTUR be used to determine duration levels.

<sup>2</sup> Excludes WORKSHARE program

<sup>3</sup> Federal Additional Compensation program start 3/2/2009 - Adds and additional \$25 to all claims

<sup>4</sup> Includes FAC Payments

For current and historic UI reports, visit:

<http://www.oregon.gov/EMPLOY/BUDGET/UI/index.shtml>

<b>Week # :</b>	<b>37</b>
<b>Ending:</b>	<b>September 19, 2009</b>

	<b>This Week</b>	<b>Last Week</b>	<b>Cumulative</b>
<b>EXTENDED BENEFITS (UI, UCFE, UCX)</b>			<b>YTD</b>
Initial Claims (Excl. Liable)	797	598	18,813
Weeks Claimed (Excl. Liable)	10,688	10,779	185,740
Gross Amount of Payments (\$) <sup>4</sup>	3,564,024	3,571,340	65,279,878
EB Benefit Payments (\$)	3,291,599	3,297,740	60,236,653
EB Federal Additional Compensation (\$) <sup>3</sup>	272,425	273,600	5,043,225
Number Exhausting Benefits	532	714	4,271

Oregon HEB Trigger "ON" 02/15/2009.

For a list of states ON EB, visit:

[http://www.workforcesecurity.doleta.gov/unemploy/claims\\_arch.asp](http://www.workforcesecurity.doleta.gov/unemploy/claims_arch.asp)

#### Misc Additional Benefits

Initial Claims (Excl. Liable)	2	4	95
Weeks Claimed (Excl. Liable)	51	50	1,477
Gross Amount of Payments (\$)	0	0	0
Number Exhausting Benefits	0	0	0

#### TRADE ADJUSTMENT ACT

Training Plans	102	18	1,353
Initial Claims	55	55	3,646
Weeks Claimed	104	72	1,261
Gross Amount of TRA Payments (\$) <sup>4</sup>	41,270	28,580	484,855
TRA Benefit Payments (\$)	38,670	26,780	459,180
TRA Federal Additional Compensation (\$) <sup>3</sup>	2,600	1,800	25,675
Certifications	5	0	33
Gross Amount of TAA Payments (\$)	2,370	0	66,639

#### WORKSHARE PROGRAM

Initial Claims	115	307	14,818
Weeks Claimed	3,834	4,445	174,664
Gross Amount of Payments (\$) <sup>4</sup>	472,945	542,249	19,571,236
WS Benefit Payments (\$)	385,345	442,649	16,321,487
WS Federal Additional Compensation (\$)	87,600	99,600	3,249,749

#### TRAINING UI (TUI)

Applications Accepted	320	182	5,289
Approved	308	153	4,574
Weeks Claimed	2,128	2,203	66,602
Gross Amount of Payments (\$) <sup>4</sup>	781,463	773,073	23,518,133
TUI Benefit Payments (\$)	727,463	719,563	22,089,443
TUI Federal Additional Compensation (\$)	54,000	53,510	1,428,690

#### SUD

Initial Claims	1	3	21
Weeks Claimed	17	14	151
Gross Amount of Payments (\$) <sup>4</sup>	8,251	4,485	56,175
SUD Benefit Payments (\$)	7,901	4,085	51,950
SUD Federal Additional Compensation (\$)	350	400	4,225

<sup>3</sup> Federal Additional Compensation program start 3/2/2009 - Adds and additional \$25 to all claims

<sup>4</sup> Includes FAC Payments

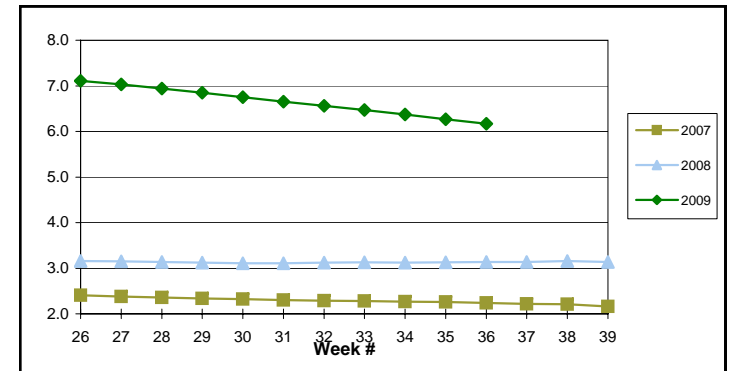
For current and historic UI reports, visit:

<http://www.oregon.gov/EMPLOY/BUDGET/UI/index.shtml>

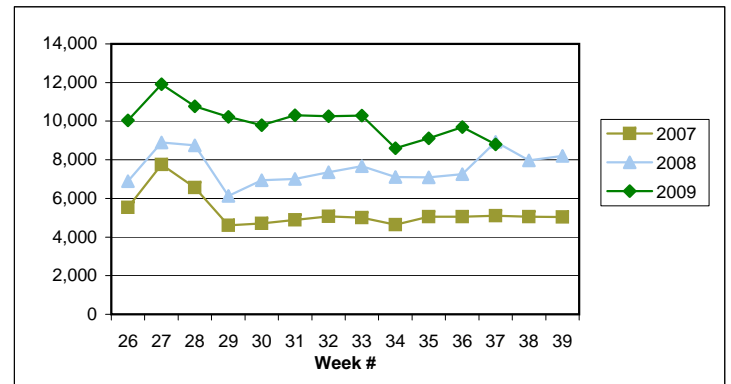
(503) 947-1679

[janet.l.orton@state.or.us](mailto:janet.l.orton@state.or.us)

EB Trigger: **6.17**



Regular Initial Claims: **8,803**



Regular Weeks Claimed: **91,612**

