



OREGON EMPLOYMENT FAST FACTS --September 2011

Current and comparative Oregon employment economic data:

<u>Monthly Data</u>	August 2011	July 2011	August 2010
Civilian Labor Force	2,014,707	2,012,251	2,002,729
Employment	1,829,282	1,823,844	1,792,729
Unemployment	188,425	188,407	210,00
Unemployment Rate (not seasonally adjusted)	9.3 (9.1 US)	9.4 (9.3 US)	10.5 (9.5 US)
Total Unemployment Rate (seasonally adjusted) (TUR is usually the rate reported in the press)	9.6 (9.1 US)	9.5 (9.1 US)	10.7 (9.6 US)

(April 2011 employment data will be released Tuesday October 18, 2011 at 10:00 a.m.)

<u>Annual Data</u> (State Fiscal Year(SFY)=7/01/10-06/30/11)	SFY 2011	SFY 2010	SFY 2009	SFY 2008
Average Benefit Check Amount	\$276.38	\$290.45	302.98	\$287.43
Average Duration <i>Regular Program</i> (in weeks)	17.22	20.0	16.48	14.4
First payments (Number of First payments on Regular claim in year)	182,889	223,937	265,483	157,051
Number of Exhaustees (Exhausted all <i>Regular Program</i> benefits available)	96,956	144,324	93,178	44,689
Percentage that exhausted <i>Regular Program</i> benefits (Percentage with a 1 st payment that exhaust <i>Regular</i> benefits)	48.6%	55%	46.5%	31.7%
Initial Claims Filed (All programs combined)	743,917	802,630	812,559	426,572
Weeks Claimed (All programs combined)	7,992,724	9,707,836	6,473,413	2,665,668
Non-Monetary Determinations (All programs)	162,551	164,146	161,753	129,441
Appeals (All programs combined)	36,819	19,768	27,582	19,750



(CY2010 = 1/01/2010- 12/31/2011)	CY 2010	CY 2009	CY 2008	CY 2007
Number of Individuals who received one or more benefit payments in the year:	367,893	366,183	240,439	172,997
Total funds paid to all claimants	2,753,567,704	\$2,719,646,973	976,979,220	\$561,038,330

	Week 2011-35	Week 2010-35	Week 2009-35
Insured Unemployment Rate (IUR) (week ending 7/9/2011)	3.80	4.78	6.37
Number of People Paid (During week including the 12 th) (all programs)	116,475	149,709	163,168

UI Program Information:

The change affects new UI claims filed on or after July 3, 2011 (effective with a BYE of 26-12 and later).

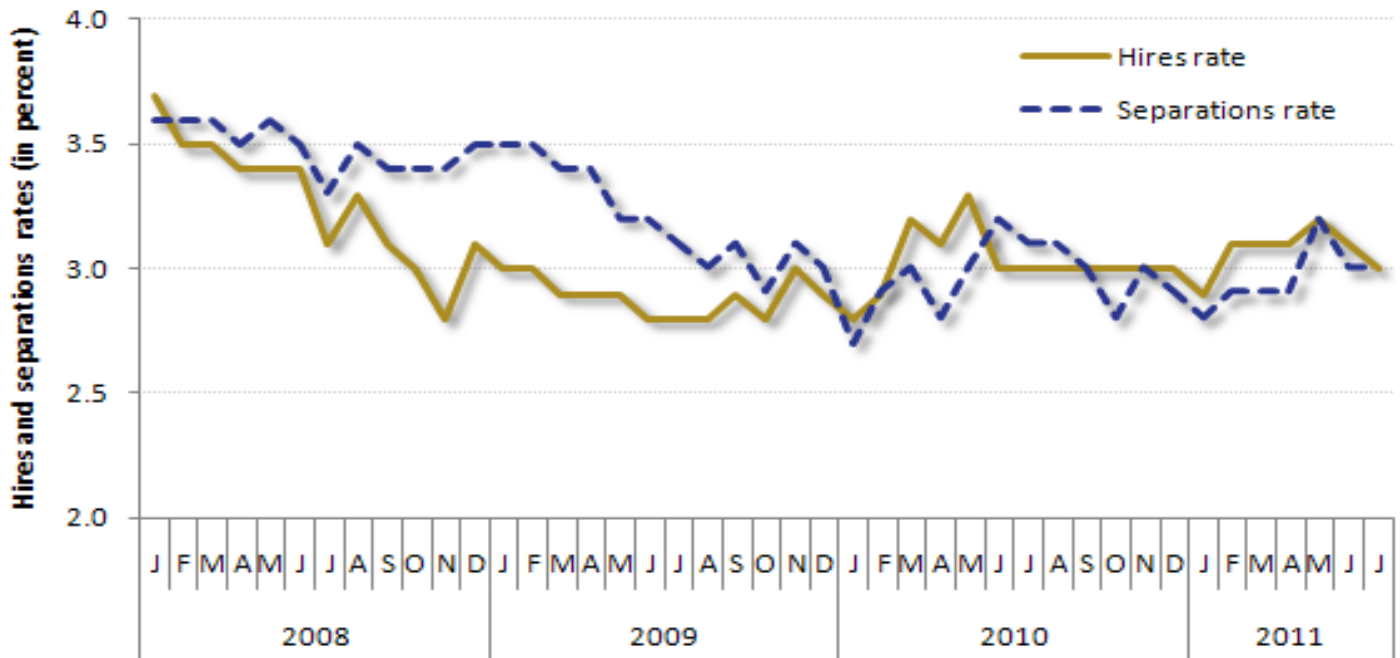
Minimum:
from \$116 to \$118

Maximum:
from \$496 to \$507

Current UI EXTENSION PROGRAM in effect:

HEB (20 week EB)	High Extended Benefit Period (In March 2011 a 3-year look-back was allowed on the TUR trigger to allow Oregon to continue to meet federal criteria for EB)	02/28/09	Min. 20 weeks
EUC 2008	Emergency Unemployment Compensation No Initial Claim filings accepted for claim weeks after: Last payable week:	07/06/2008	12/31/2011 06/09/2012

Hires and separations rates, total nonfarm, seasonally adjusted, January 2008–July 2011



Source: U.S. Bureau of Labor Statistics