



Amtrak Cascades Ridership Report December 2008



The following information is a snapshot of ridership performance (with a few observations), average trip length, a year-to-date summary, and other Amtrak Cascades news.

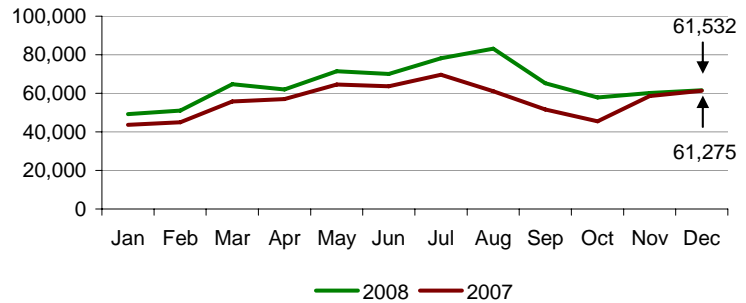
Ridership

December breaks 60,000 for the second year straight.

When compared with December 2007:

- Ridership increased 0.4 percent.
- Ridership for train 500 (Pdx-Sea) increased 2.6 percent.
- Ridership for train 500 (Eug-Pdx) increased 29.6 percent.
- Ridership for train 509 (Sea-Pdx) and 509 (Pdx-Eug) increased 6.8 percent and 53.8 percent, respectively.
- Ridership for trains 513 and 516 decreased 5.4 percent and 0.3 percent respectively.
- See Other Amtrak Cascades News for weather-related issues.

Passengers



Monthly Ridership per Funding Agency

Amtrak Cascades operations are funded by the states of Washington and Oregon and Amtrak. This table provides a breakdown per funding agency.

When compared with December 2007:

- Ridership for Washington State funded trains decreased 4.1 percent.
- Ridership for Oregon funded trains increased 15.1 percent.
- Ridership for Amtrak funded trains increased 4.7 percent.
- See "Other Amtrak Cascades News" below for other information.

Agency	2008	2007
Washington Funded Trains	39,956	41,671
Oregon Funded Trains*	11,654	10,125
Amtrak Funded Trains**	9,922	9,479
Route Totals	61,532	61,275

*Represents trains 500 (Eug-Pdx), 504, 507 (Pdx-Eug), and 509 (Pdx-Eug).

**Represents trains 500 (Pdx-Sea) and 509 (Sea-Pdx).

Year-to-Date (YTD) Summary

- Year ending ridership passed 2007 total ridership of 676,760 by 97,661 riders.
- Average trip length is still comparable to 2007.

YTD	Ridership	Passenger Miles (PM)	Ave. Trip Length (miles)
2008	774,421	119,209,956	153.9
2007	676,760	103,835,246	153.4

Other Amtrak Cascades News

- Severe weather conditions caused train cancellations on 12/19 – trains 508 & 513; 12/20 – trains 500, 507, & 508; 12/21-22 – all Amtrak Cascades trains; 12/25-26 – trains 510 and 517. Alternative transportation was provided on 12/25-26 only.
- Amtrak Superliner equipment is being used for trains 510 and 517 and is operating with its original schedule.
- WSDOT and Amtrak began a new Amtrak Cascades connecting bus service on May 12. December ridership for this new bus service was 2,261. This was a 42.0 percent increase from November.