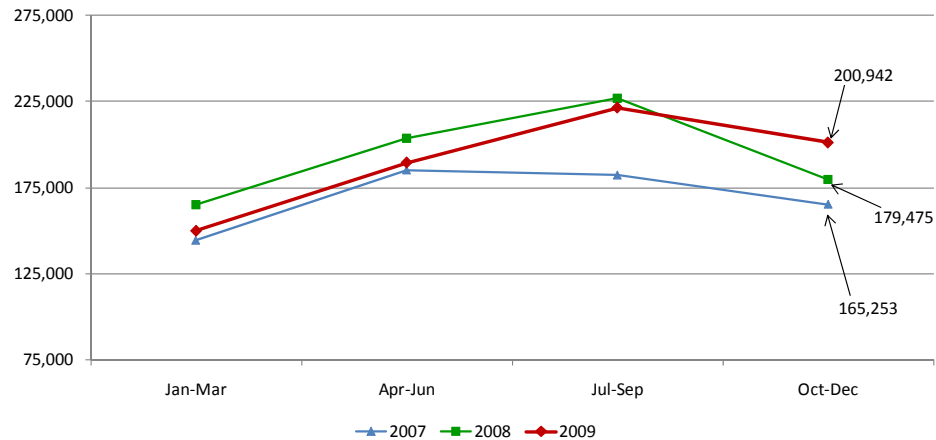


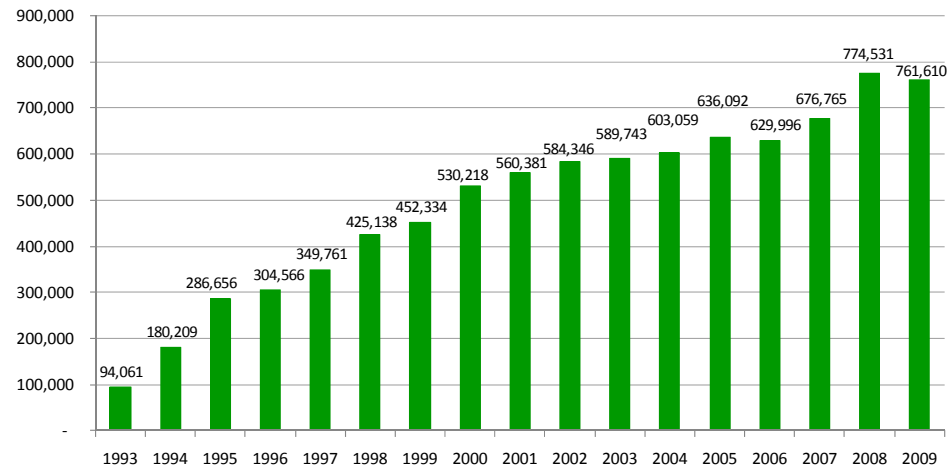
Amtrak Cascades Fourth Quarter and Annual Ridership Report – 2009

Fourth Quarter Amtrak Cascades Ridership



- Overall ridership for this quarter increased 11.9 percent from 2008 and increased 21.5 percent from fourth quarter 2007.

Annual Amtrak Cascades Ridership



- Although the first half of 2009 started with lower ridership than 2008, the second half saw a big increase and overall had a higher ridership than 2008.
- Overall ridership for 2009 decreased 1.7 percent from 2008, but still increased 12.5 percent from 2007. The decrease was mainly due to poor performance on Oregon-sponsored trains in the Portland to Eugene corridor.

Ridership per Funding Agency

Amtrak *Cascades* operations are funded by the state of Washington, the state of Oregon, and Amtrak. This table provides a breakdown per funding agency.

Fourth Quarter			
Agency	2009	2008	2007
Washington Funded Trains	136,389	117,956	110,384
Oregon Funded Trains*	30,199	30,143	26,546
Amtrak Funded Trains**	34,354	31,376	28,323
Route Totals	200,942	179,475	165,253
Annual Ridership			
Agency	2009	2008	2007
Washington Funded Trains	523,808	521,603	457,501
Oregon Funded Trains*	109,802	125,438	106,757
Amtrak Funded Trains**	128,000	127,490	112,507
Route Totals	761,610	774,531	676,765

* Represents trains **500** and **504** (EUG-PDX), and **507** and **509** (PDX-EUG).

** Represents trains **500** (PDX-SEA) and **509** (SEA-PDX).

Year-to-Date (YTD) Summary

YTD	Ridership	Passenger Miles	Ave. Trip Length (miles)
2009	761,610	117,879,821	154.8
2008	774,531	119,214,220	153.9
2007	676,765	103,618,178	153.1

Average trip length was slightly longer in 2009 when compared with 2008 and 2007.